

**BRICK CONSTRUCTION**  
DETAILS



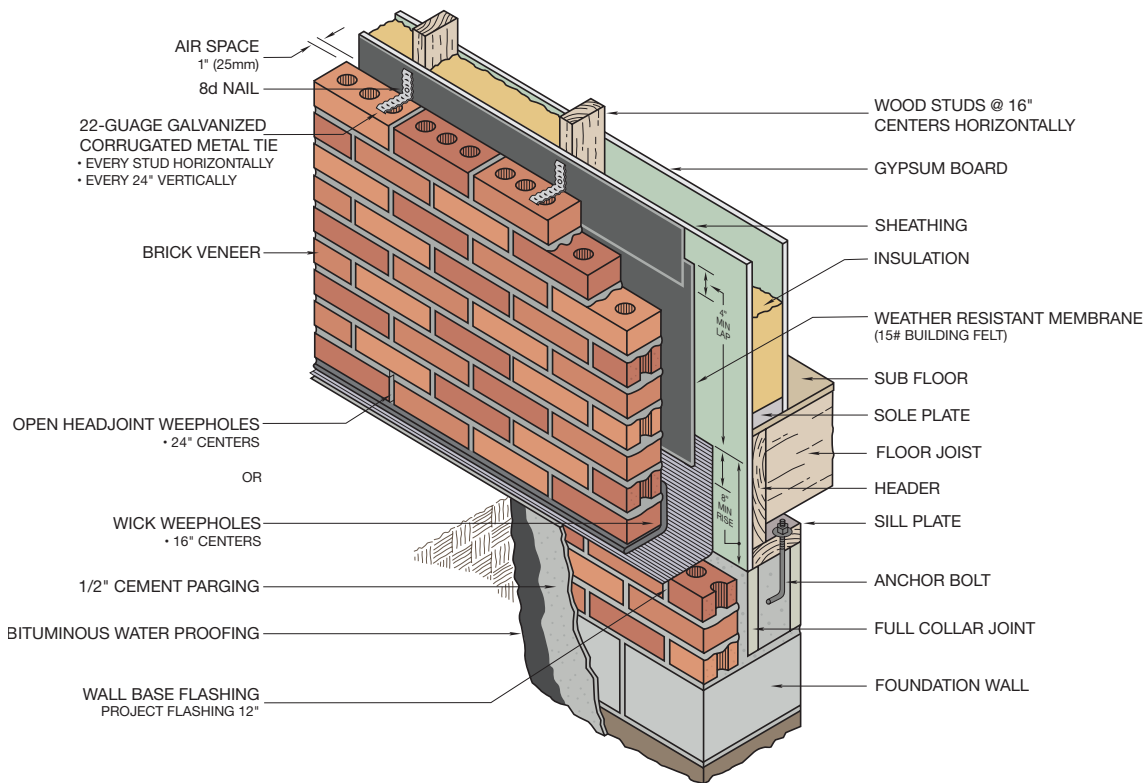


## **MAGNIFY DESIGN IMPACT WITH BRICK CONSTRUCTION**

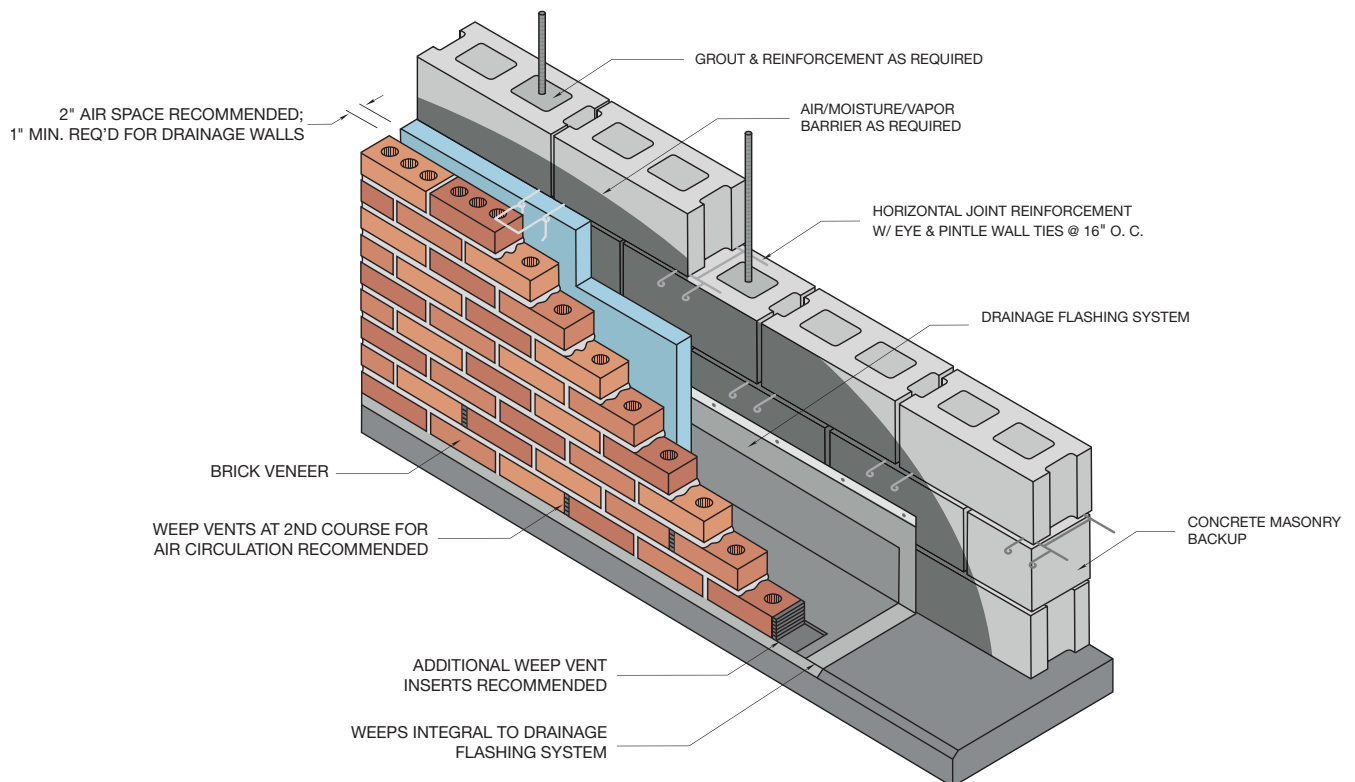
Nothing tops the strength, stability and timelessness of brick construction. And no one tops Endicott for brick manufacturing. Mineral-rich clays help create the beautiful aesthetics that go into every brick, and a variety of colors make a bold statement while meeting design intent. Designed for year-round commercial, residential and remodeling applications, Endicott brick is the choice for stunning, strong projects.



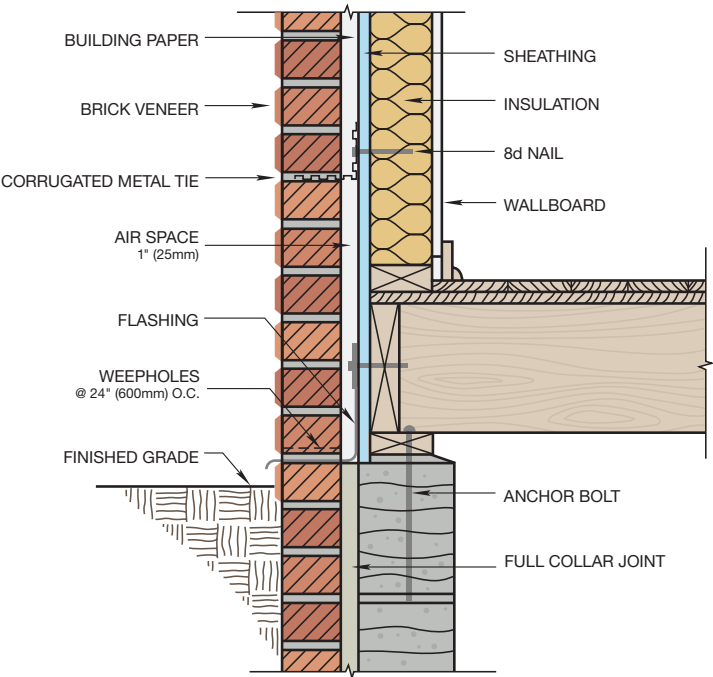
## BRICK VENEER WALL



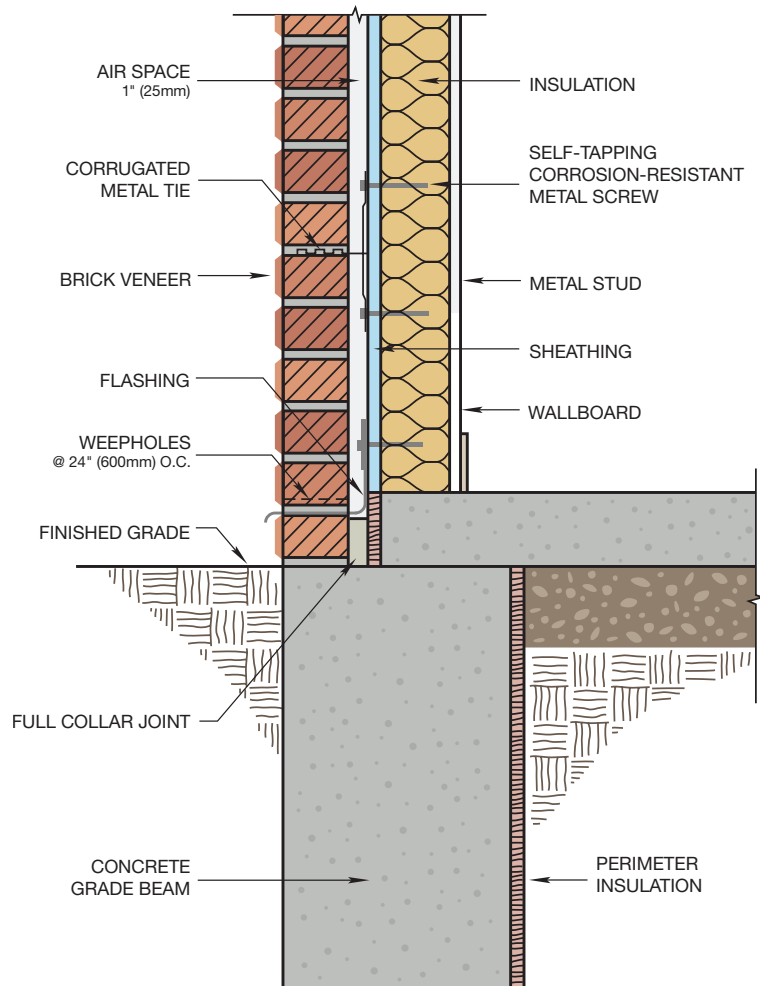
## CHIMNEY CAP DETAILS



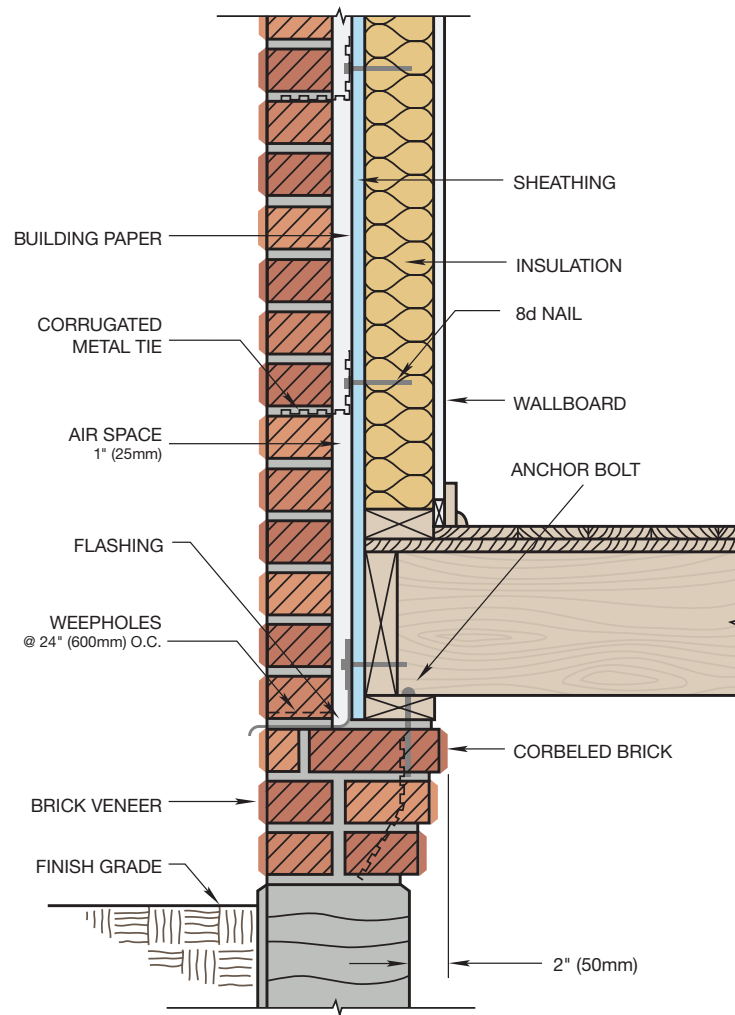
TYPICAL FOUNDATION DETAILS



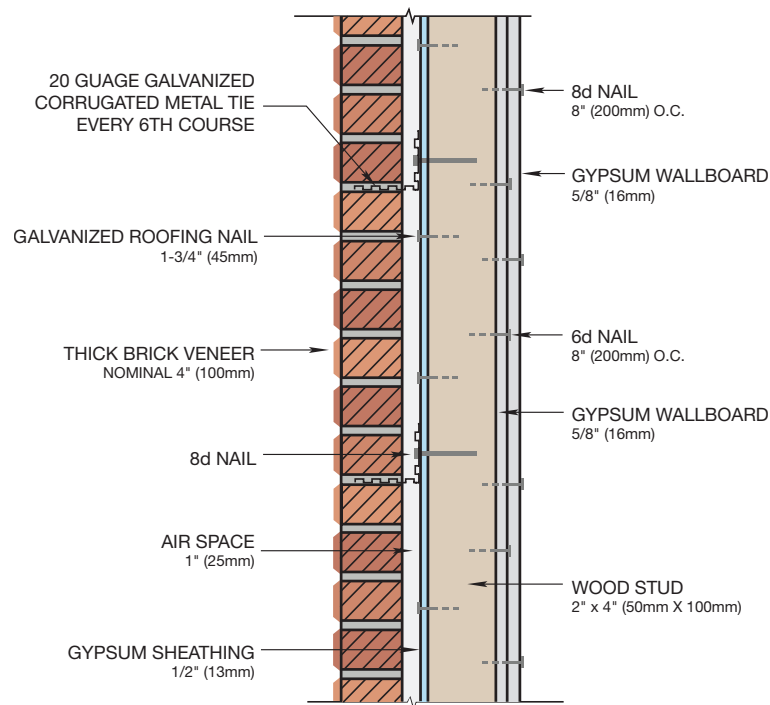
## TYPICAL FOUNDATION DETAILS CONTINUED



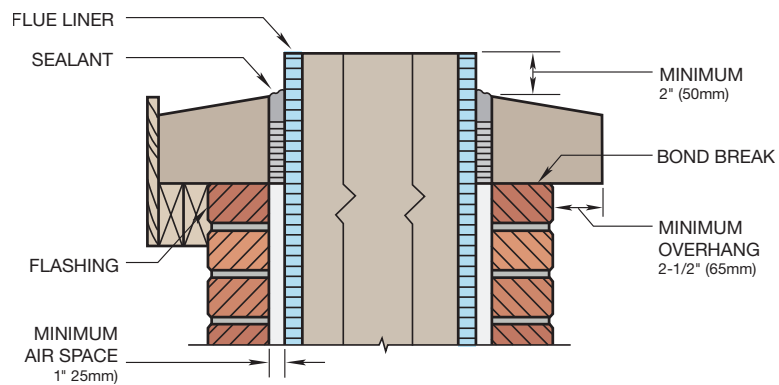
## TYPICAL FOUNDATION DETAILS CONTINUED



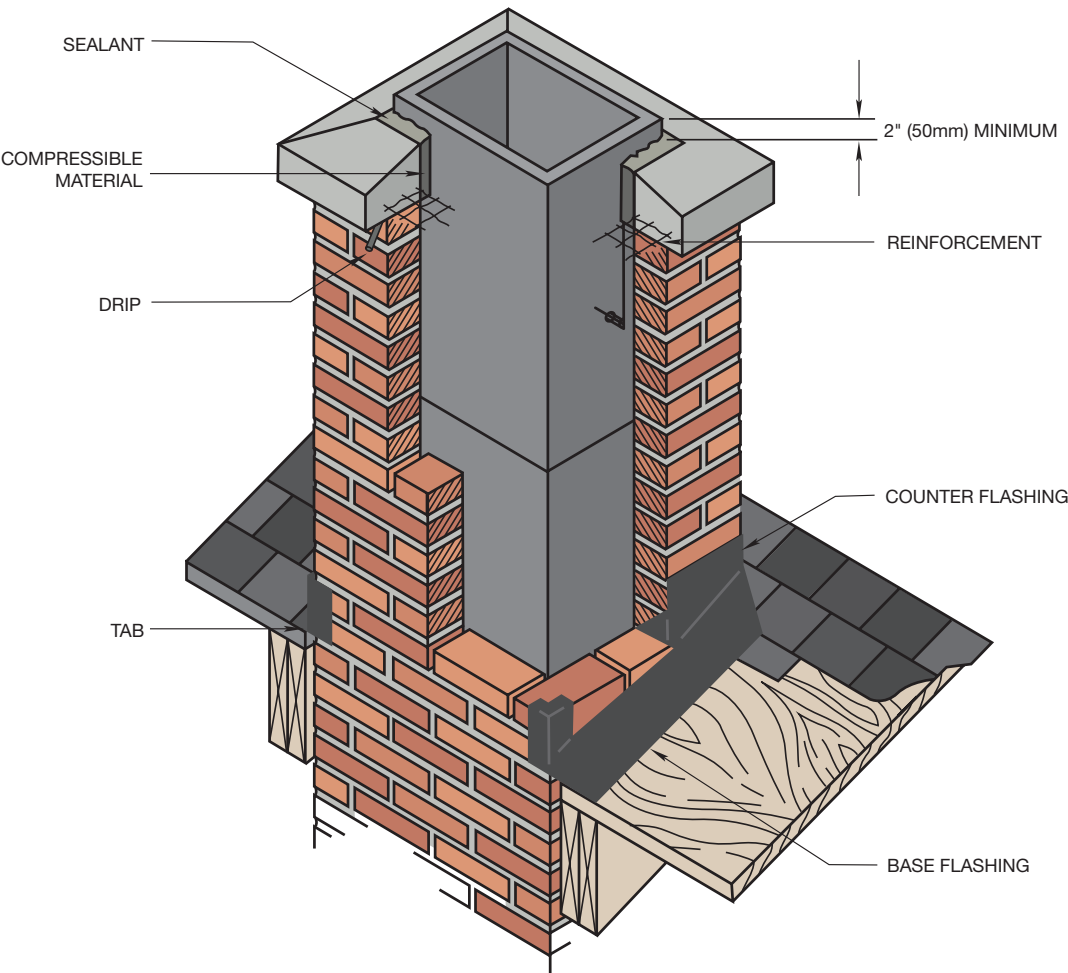
## FIRE RESISTANCE



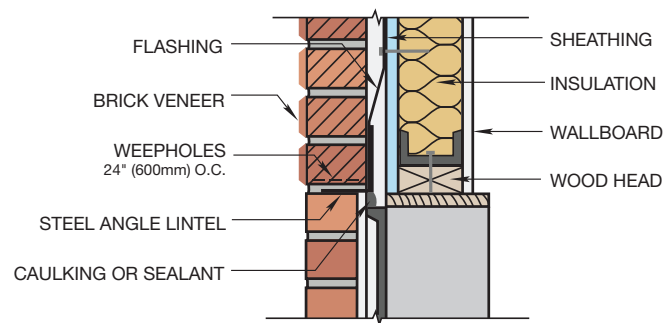
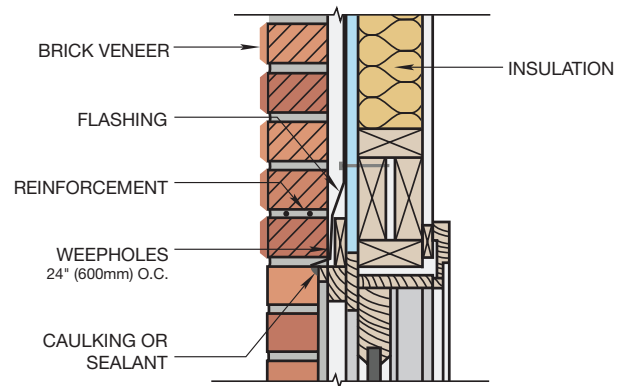
## CHIMNEY CAP DETAILS



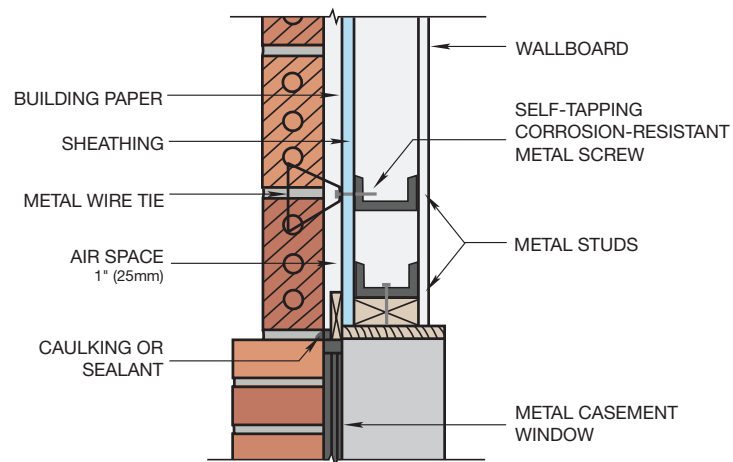
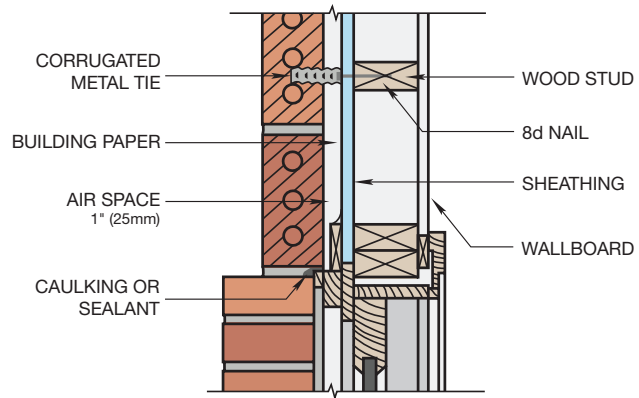
TYPICAL SECTION AND FLASHING DETAILS



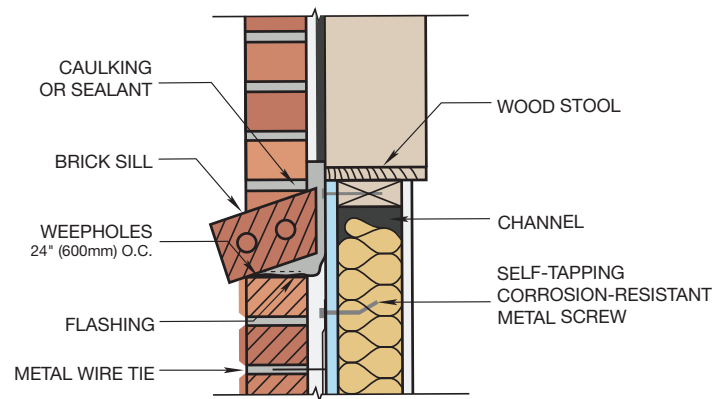
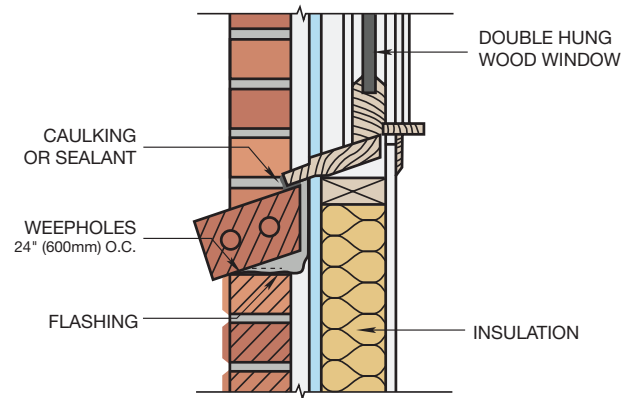
TYPICAL LINTEL DETAILS



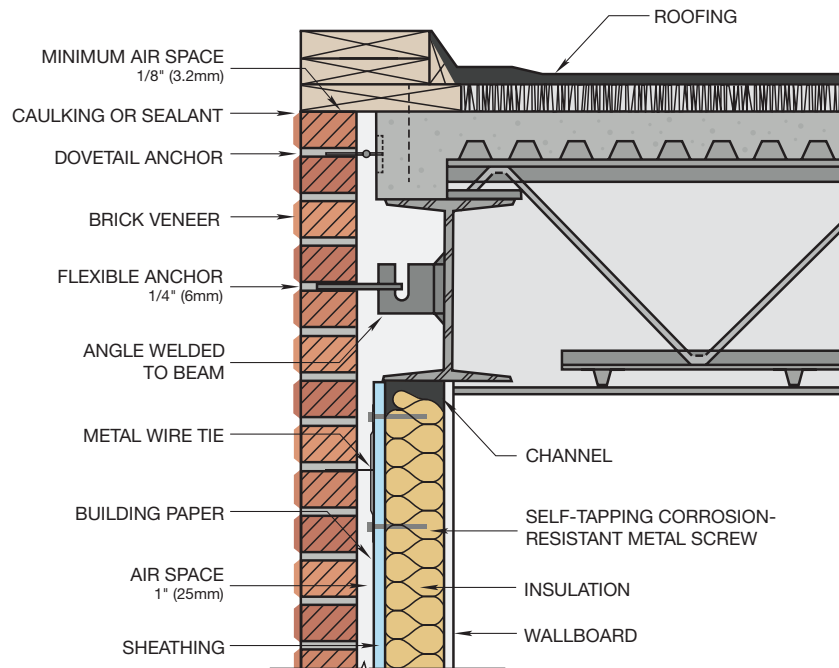
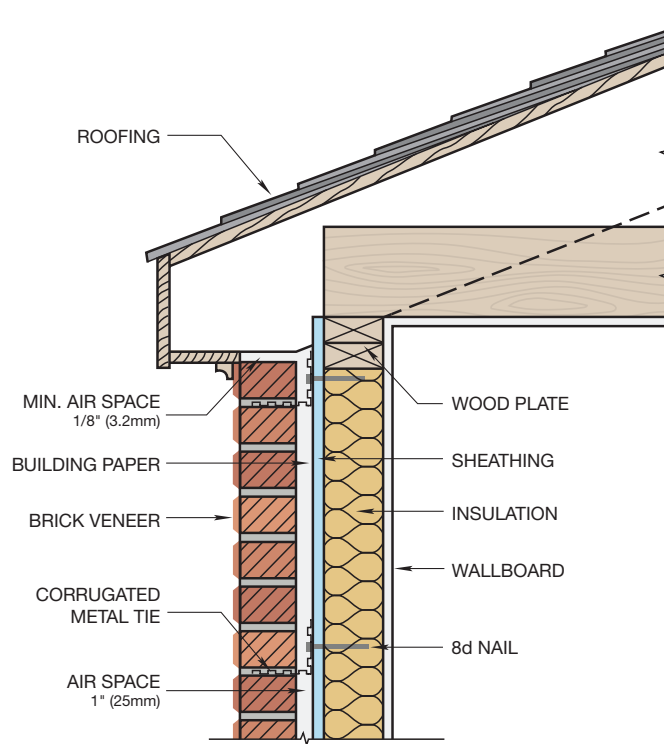
## TYPICAL JAMB DETAILS



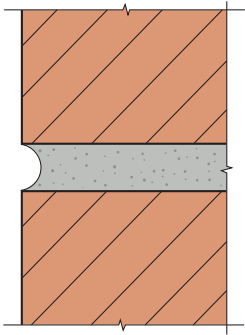
TYPICAL SILL DETAILS



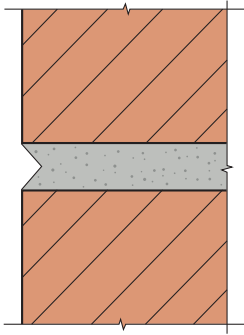
## TYPICAL EAVE DETAILS



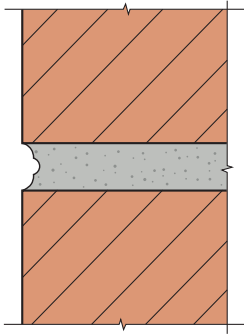
TYPICAL BRICK MASONRY MORTAR JOINTS



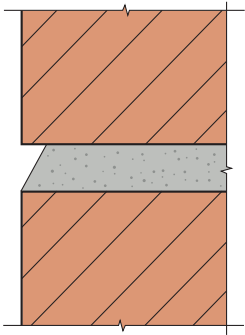
**CONCAVE**  
SEVERE WEATHERING



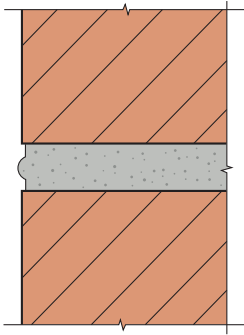
**V**  
SEVERE WEATHERING



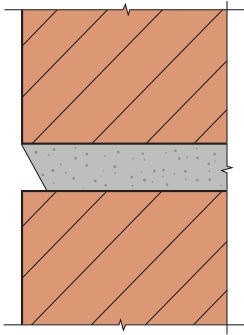
**GRAPEVINE**  
SEVERE WEATHERING



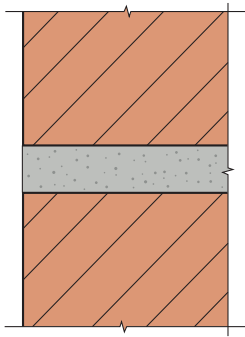
**WEATHERED**  
MODERATE WEATHERING



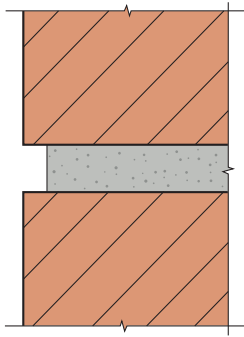
**BEADED**  
MODERATE WEATHERING



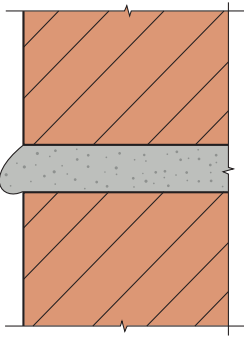
**STRUCK\***  
MODERATE WEATHERING



**FLUSH\***  
NEGLECTIBLE WEATHERING



**RAKED\***  
NEGLECTIBLE WEATHERING



**EXTRUDED\***  
NEGLECTIBLE WEATHERING

\* NOTE: Endicott Clay Products does not recommend Struck, Flush, Raked or Extruded mortar joints.

EMPIRICAL HEIGHT LIMITATIONS FOR BRICK VENEER

Nominal Thickness of the Brick Veneer, in (mm)	Stories	Height at Plate, ft (m)	Height at Gable, ft (m)
3 (75)	2	20 (6.10)	28 (8.53)
4 (100)	3	30 (9.14)	38 (11.58)

TYPICAL TIES FOR BRICK VENEER

**a**

Used to attach brick veneer to wood frame backdrop

**b**

Used to attach brick veneer to metal studs

**c**

Same as (b)

**d**

Used to attach brick veneer to structural steel

**e**

Used to attach brick veneer to concrete backup

**f**

Same as (e)

**g**

Used to attach brick veneer to masonry backup

**h**

Same as (g)

The diagrams show various types of ties used for attaching brick veneer to different backdrops. (a) is a corrugated metal tie. (b) and (c) are U-shaped metal ties. (d) is a U-shaped metal tie with a hook. (e) is a U-shaped metal tie with a hook and a small plate. (f) is a corrugated metal tie. (g) is a U-shaped metal tie. (h) is a large U-shaped metal tie.

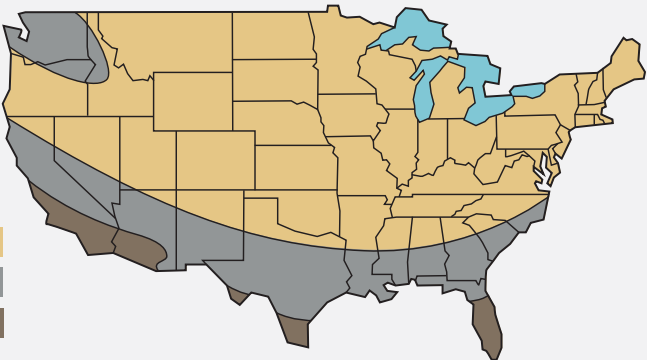
WEATHERING REGIONS

Endicott recommended weathering indexes in the United States

- Severe Weathering

Moderate Weathering

Negligible Weathering
- 



In 1920, rich mineral deposits were discovered in Jefferson County, Nebraska. These rich minerals help give Endicott brick their unmatched color and sheen. Across North America, Endicott's collection of face brick, pavers, tile, thin brick and special shapes are setting the solid world in motion.

For other literature, samples and the name of your nearest distributor, contact Endicott today.



Distributed by

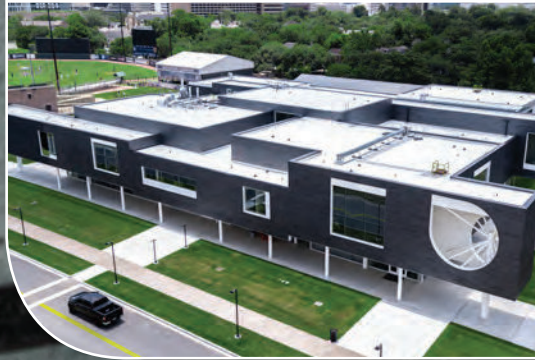


IXLBUILD.COM

**Endicott Clay Products Company**  
P.O. Box 17  
Fairbury, Nebraska USA 68352  
402-729-3315 FAX: 402-729-5804

**Endicott Thin Brick & Tile, LLC**  
P.O. Box 645  
Fairbury, Nebraska USA 68352  
402-729-3323 FAX: 402-729-5804

[endicott.com](http://endicott.com)



**Moody Center for the Arts**  
**Rice University**

Color: Manganese Ironspot  
Texture: Smooth  
Size: Norman  
Location: Houston, TX