



Endicott

COLLECTION

FACE BRICK

THIN BRICK

CLAY PAVERS



BUILDING LEGACIES FROM THE GROUND UP.



THE MOMENT WHEN IT ALL COMES TOGETHER.

A GREAT IDEA, THE RIGHT MATERIAL, A NEW
BEGINNING. AT ENDICOTT, OUR BRICK AND
PAVERS, ONE BY ONE, HAVE BEEN LAYING
THE FOUNDATION FOR GREAT ARCHITECTURE
FOR OVER 100 YEARS.

TABLE OF CONTENTS

FACE BRICK

Featured Projects	4-11
Colors	12-17
Textures	18-20
Sizes	21

THIN BRICK

Featured Projects	22-29
Colors	30-33
Textures	34-36
Applications	37
Sizes	38-39
Glazed	40-41

CLAY PAVERS

Featured Projects	42-49
Colors	50-51
Sizes	52
INVISI-LUG™	53

Brick Colors: Manganese Ironspot, Sienna Ironspot, Dark Sandstone, Light Sandstone

Bruce D. Nesbitt African American Cultural Center – Champaign, IL

ST. GREGORY THE GREAT CATHOLIC CHURCH



MARYSVILLE
KANSAS





PROJECT DETAILS

COLOR

Medium Ironspot #46

SIZE

Modular
Shapes

TEXTURE

Velour

DEBRUCE HALL KC ART INSTITUTE



KANSAS CITY
MISSOURI





PROJECT DETAILS

COLOR

Manganese Ironspot

SIZE

Modular
Shapes

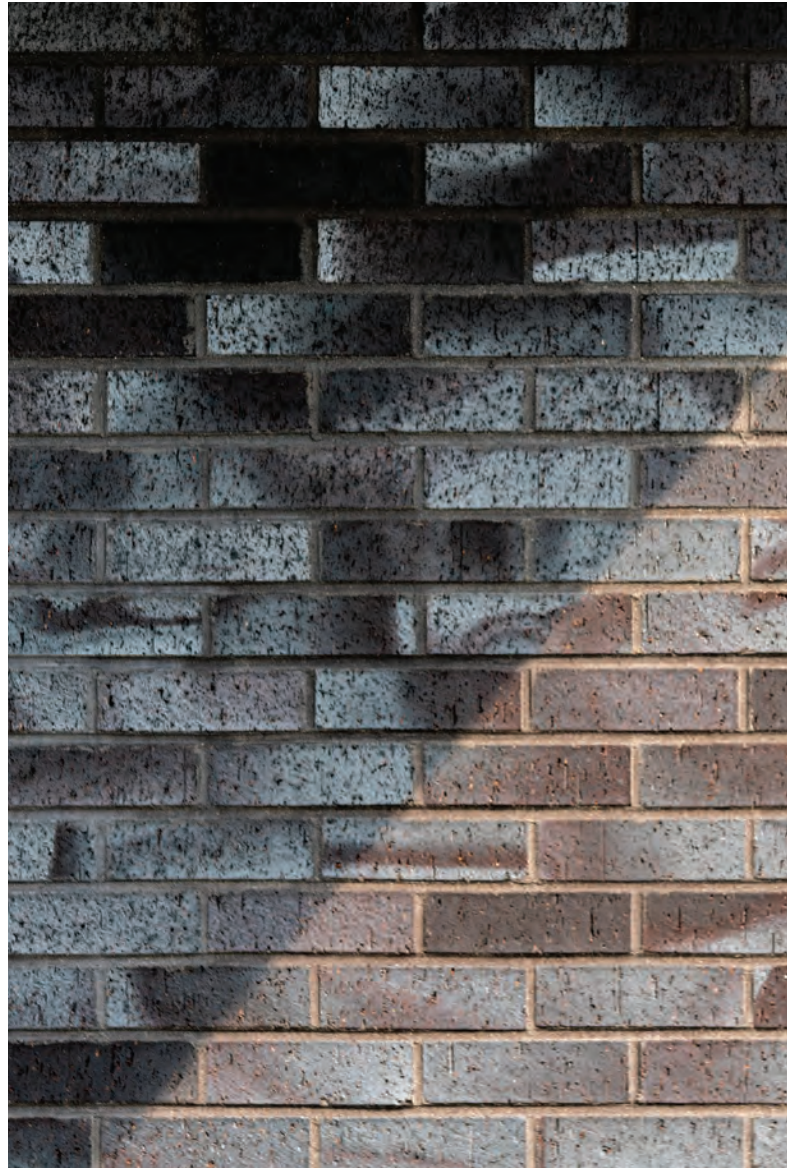
TEXTURE

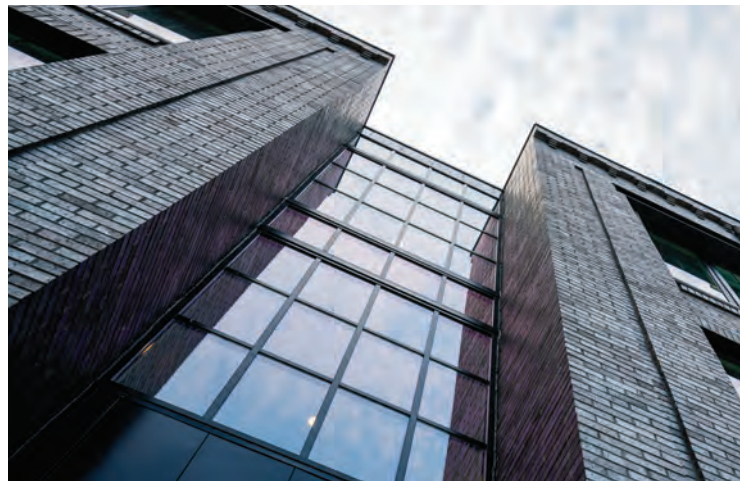
Velour

PEABODY WALK LOFTS



BALTIMORE
MARYLAND





PROJECT DETAILS

COLOR

Ravenswood Ironspot

SIZE

Modular
Shapes

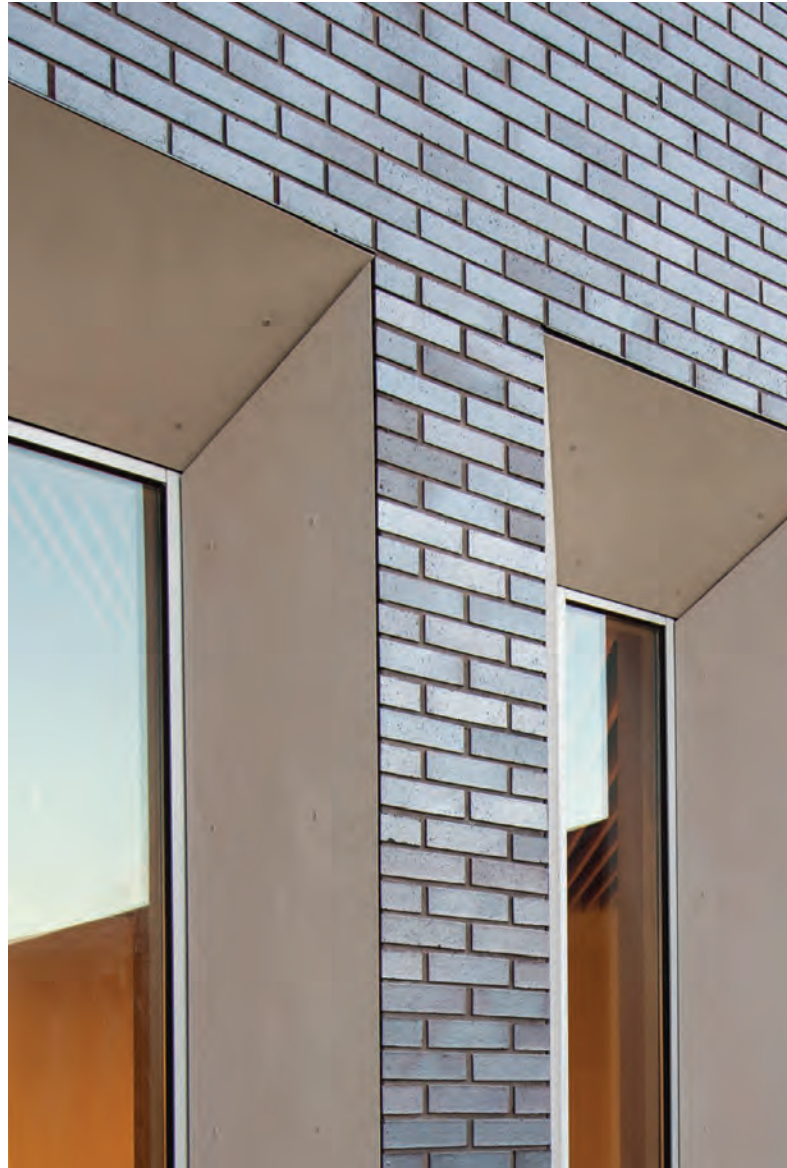
TEXTURE

Velour

ST. MARY'S CHAPEL



LIVONIA
MICHIGAN





PROJECT DETAILS

COLOR

Dark Ironspot

SIZE

Modular
Shapes

TEXTURE

Smooth

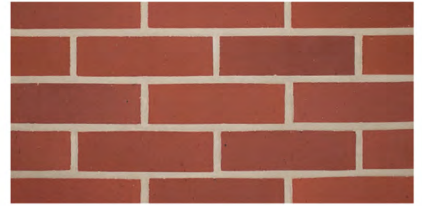
ARCHITECTURAL SERIES



Golden Buff



Light Grey Blend



Ruby Red



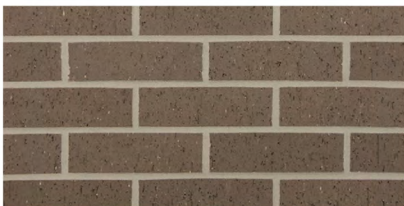
Grey Blend



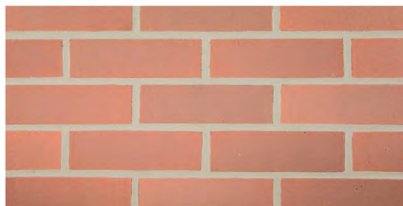
Light Sandstone



Desert Ironspot Light



Dark Sandstone



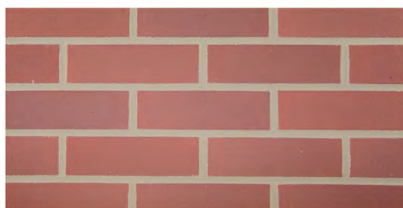
Rose Blend



Coppertone



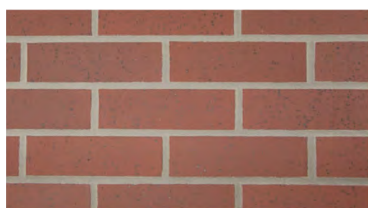
Red Blend



Burgundy Blend



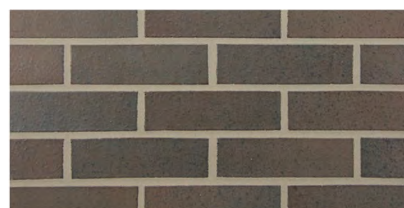
Bordeaux Blend



Red Ironspot



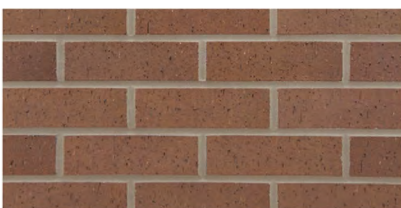
Executive Ironspot



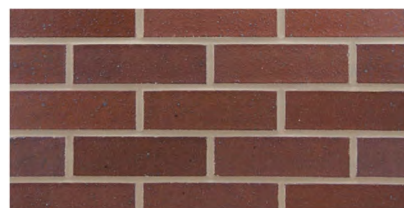
Sienna Ironspot



Desert Ironspot Dark



Medium Ironspot #77



Medium Ironspot #46



Copper Canyon



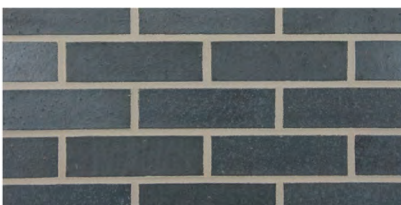
Dark Ironspot



Ravenswood Ironspot



Graphite



Manganese Ironspot

RUSTIC SERIES



Grey Sands



Adobe Sands Heritage



Copper Sands Heritage



Grey Heritage with Black



Sahara Sands Heritage*



Orleans Sands Heritage



Burgundy Sands Heritage*



Merlot Sands Antique



Autumn Sands Heritage

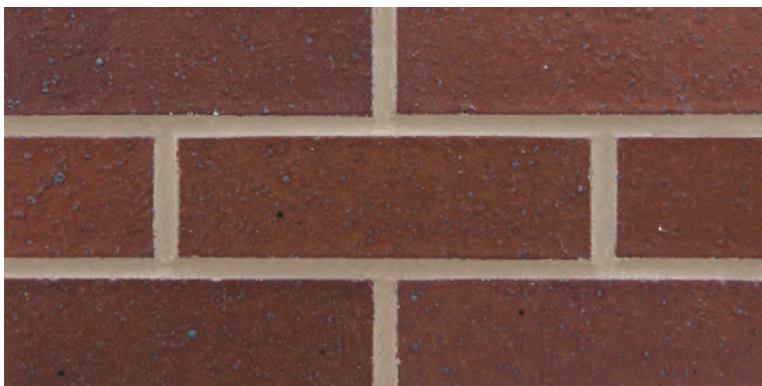


Heritage #46 no Yellow



Heritage #46

TEXTURES



Smooth



Velour



Matt



Velvetex



Vertical Score



Artisan

TEXTURES



Heritage

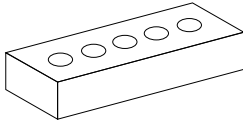


Antique

SIZES

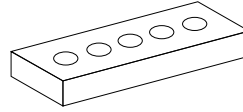
NORMAN

3-5/8" x 2-1/4" x 11-5/8"



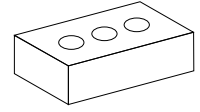
ROMAN

3-5/8" x 1-5/8" x 11-5/8"



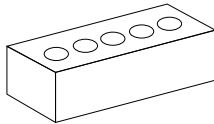
MODULAR

3-5/8" x 2-1/4" x 7-5/8"



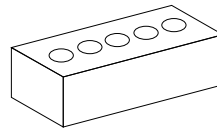
SLIM KINGSIZE

2-5/8" x 2-5/8" x 9-5/8"



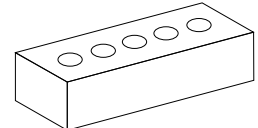
KINGSIZE

3" x 2-5/8" x 9-5/8"



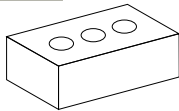
NORWEGIAN

3-5/8" x 2-13/16" x 11-5/8"



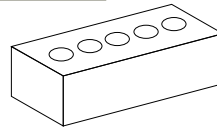
ENGINEER MODULAR

3-5/8" x 2-13/16" x 7-5/8"



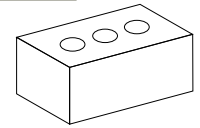
ENGINEER KINGSIZE

3" x 2-13/16" x 9-5/8"



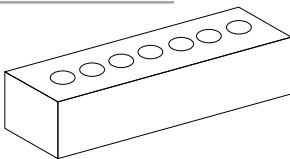
CLOSURE

3-5/8" x 3-5/8" x 7-5/8"



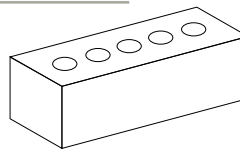
MERIDIAN

3-5/8" x 3-5/8" x 15-5/8"



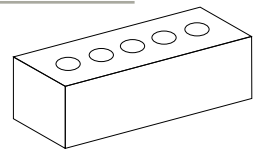
3" UTILITY

3" x 3-5/8" x 11-5/8"



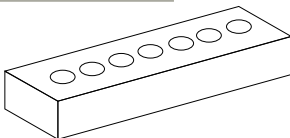
UTILITY

3-5/8" x 3-5/8" x 11-5/8"



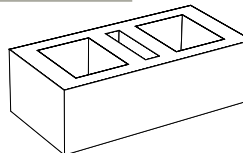
2-1/4" MERIDIAN

3-5/8" x 2-1/4" x 15-5/8"



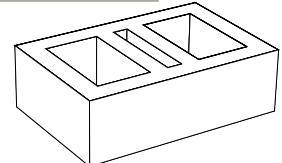
6" THRU THE WALL

5-5/8" x 3-5/8" x 11-5/8"



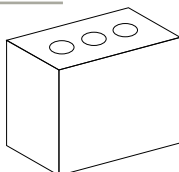
8" THRU THE WALL

7-5/8" x 3-5/8" x 11-5/8"



TRIPLE BRICK

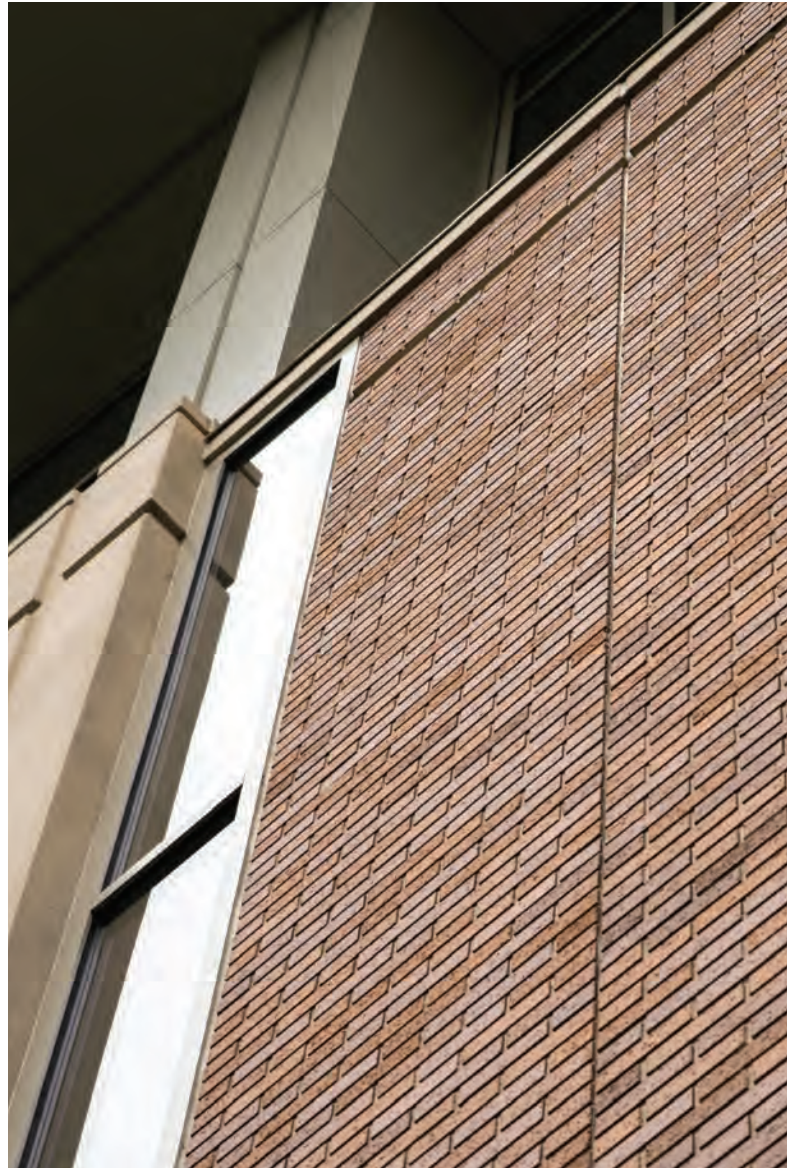
3-5/8" x 7-5/8" x 7-5/8"



BOSTON COLLEGE FISH FIELD HOUSE



CHESTNUT HILL
MASSACHUSETTS





PROJECT DETAILS

COLOR

Desert Ironspot Dark
Coppertone

SIZE

Modular

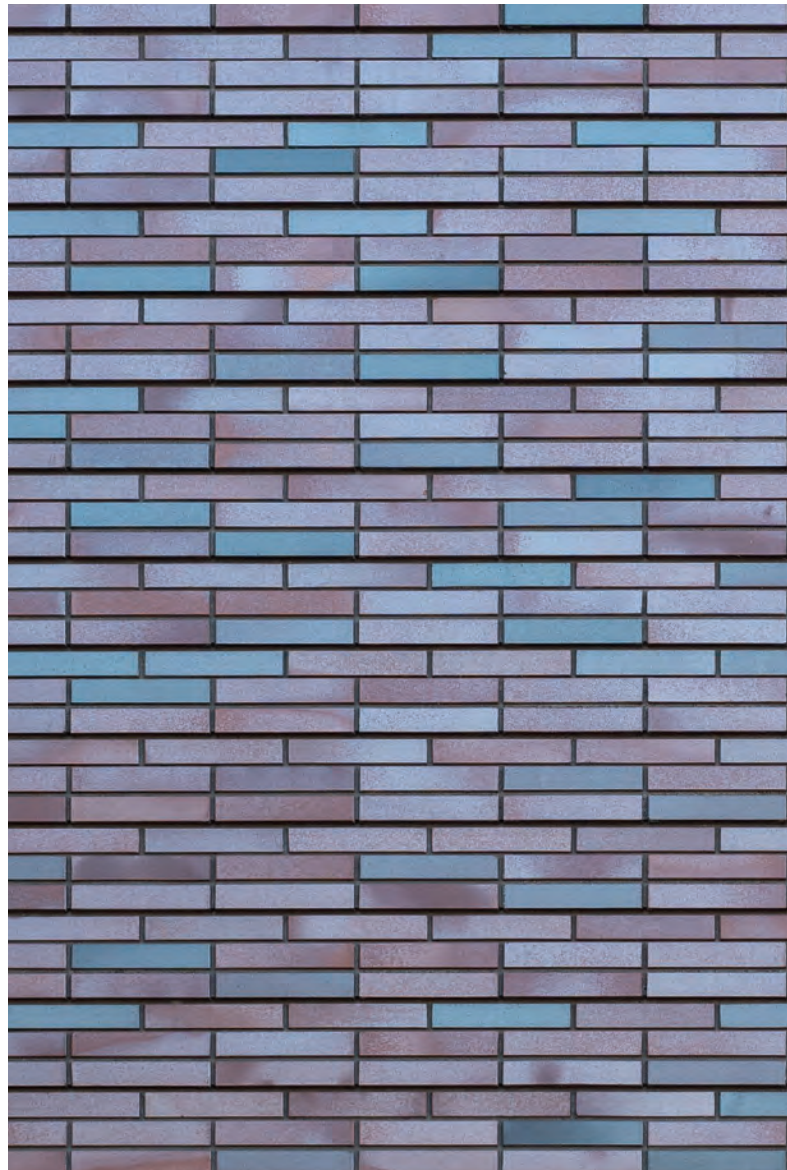
TEXTURE

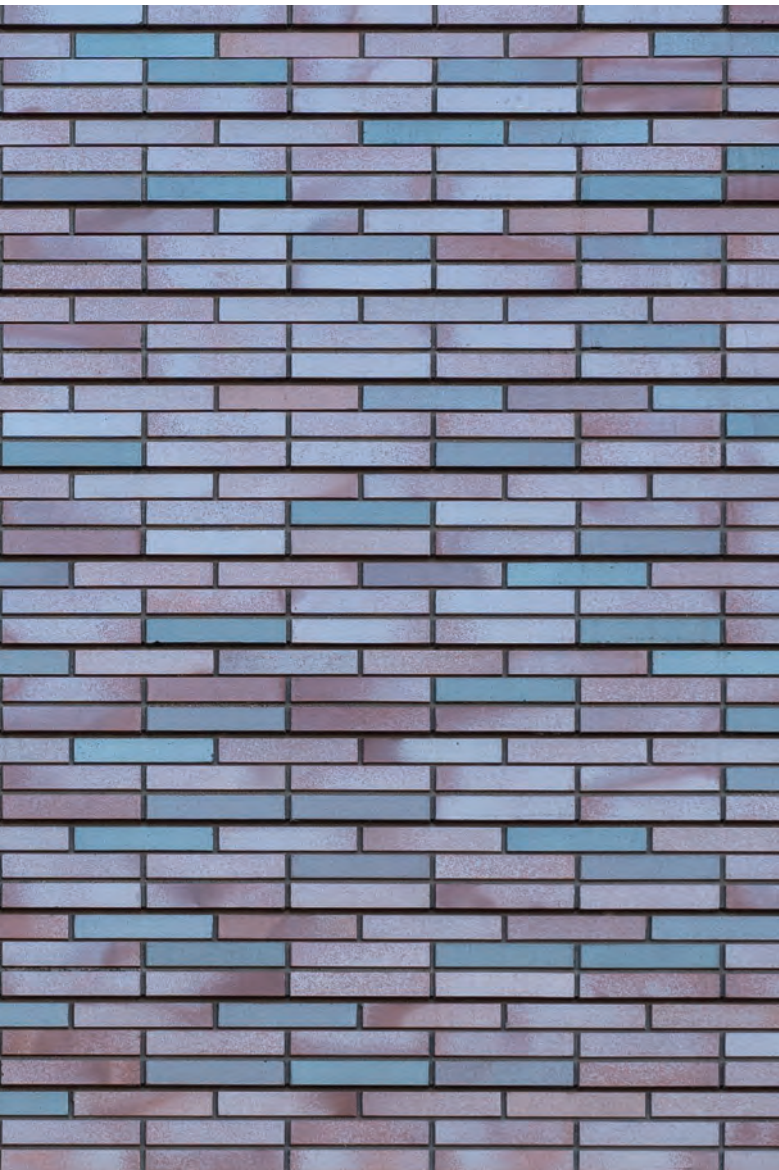
Velour

AUGSBURG UNIVERSITY, HAGFORS CENTER



MINNEAPOLIS
MINNESOTA





PROJECT DETAILS

COLOR

Medium Ironspot #46
Manganese Ironspot
Dark Ironspot

SIZE

Norman

TEXTURE

Smooth

DC WEST ELEMENTARY SCHOOL



VALLEY
NEBRASKA





PROJECT DETAILS

COLOR

Dark Sandstone

SIZE

Modular

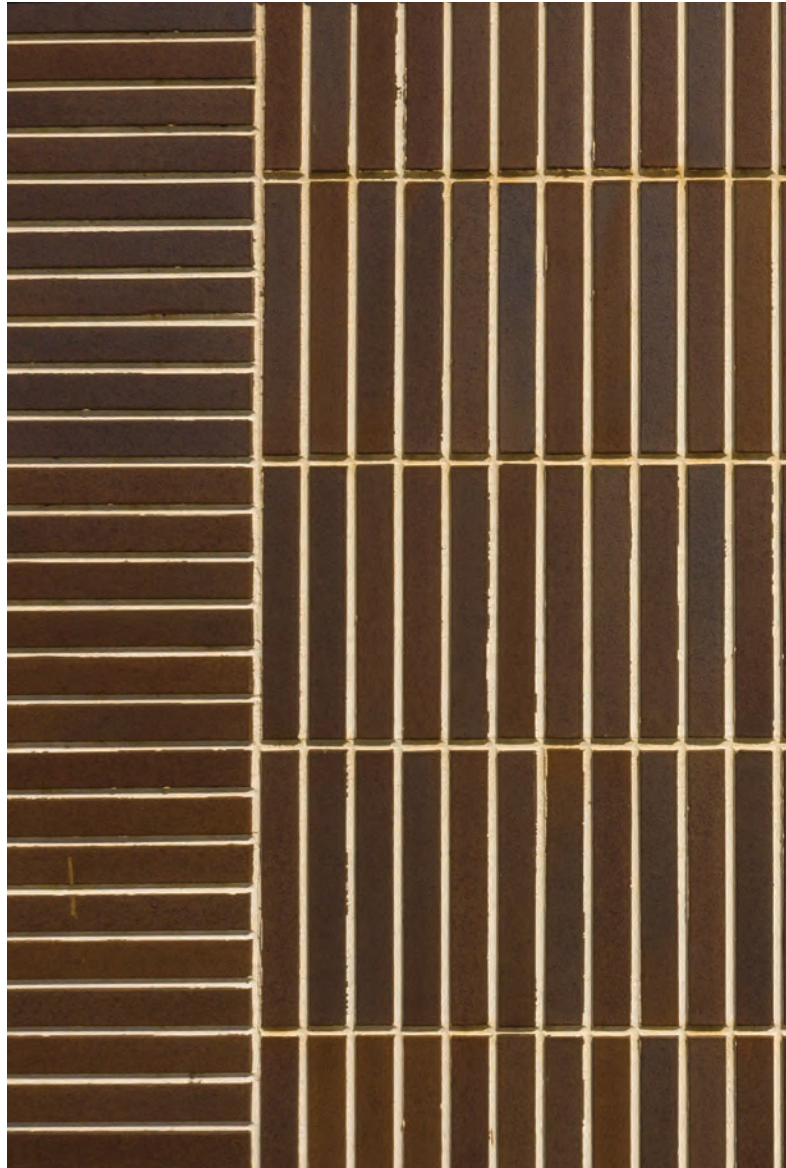
TEXTURE

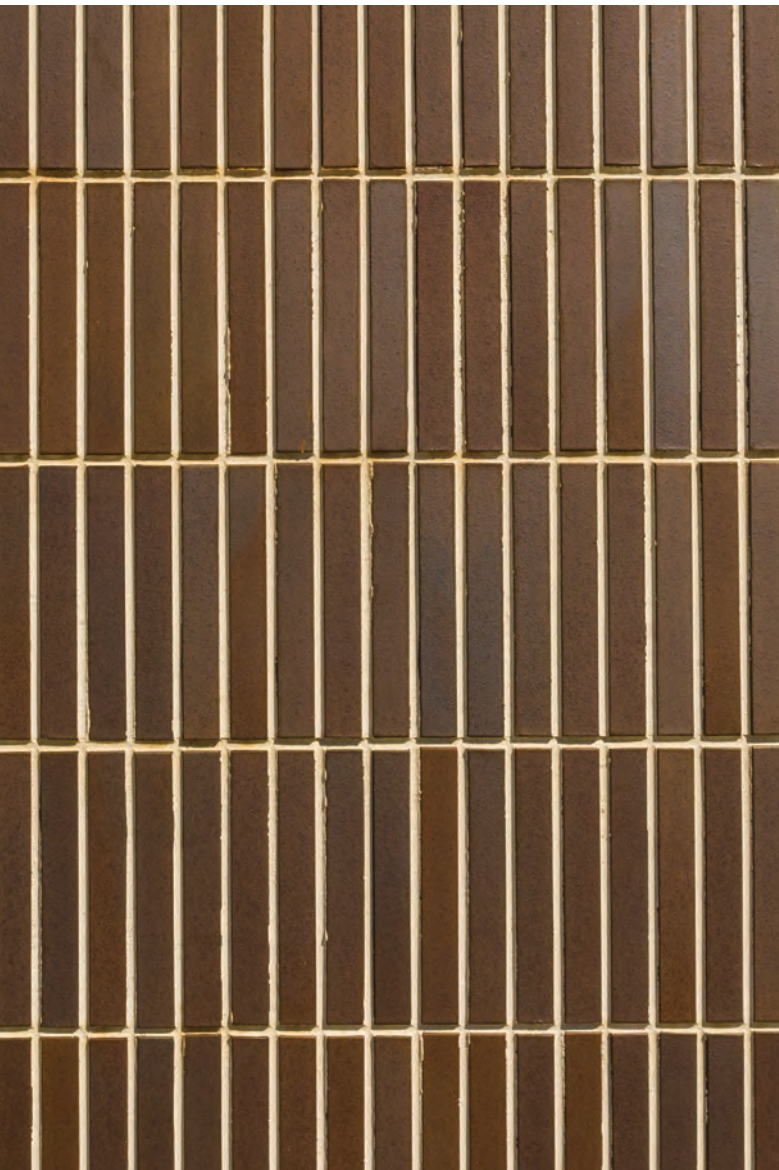
Artisan

HEART MINISTRY CENTER



OMAHA
NEBRASKA





PROJECT DETAILS

COLOR

Sienna Ironspot

SIZE

Roman

TEXTURE

Smooth

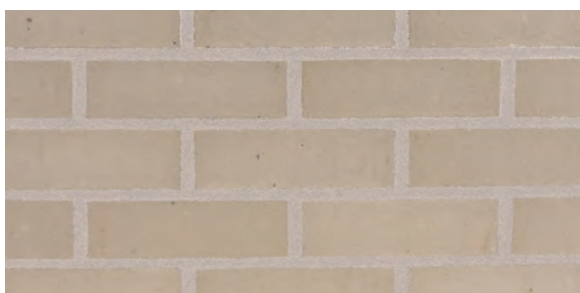
COLORS



Ivory Blend



Golden Buff



Light Grey Blend



Grey Blend



Light Sandstone



Dark Sandstone



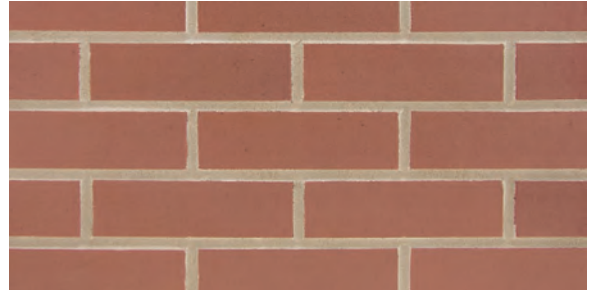
Buff Blend



Rose Blend



Red Blend



Burgundy Blend



Ruby Red



Red Ironspot



Desert Ironspot Light



Desert Ironspot Dark



Coppertone



Copper Canyon

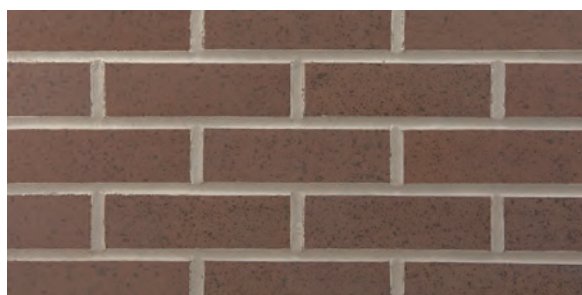
COLORS



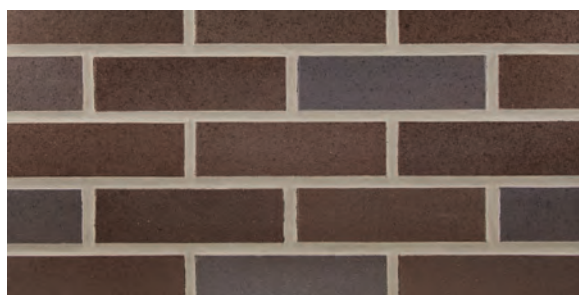
Bordeaux Blend



Graphite



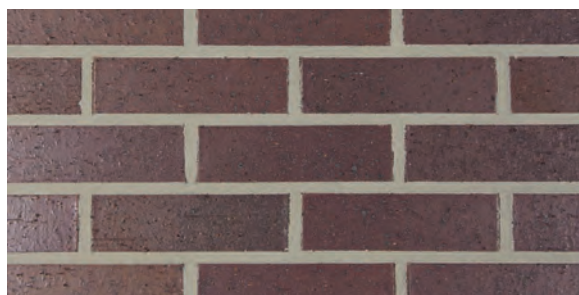
Executive Ironspot



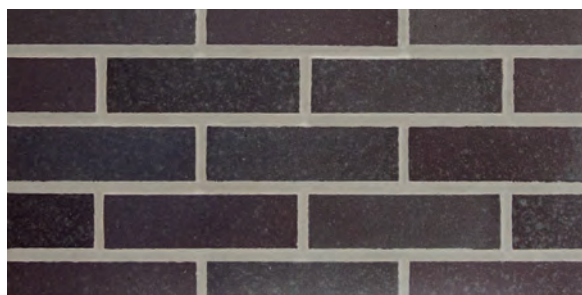
Sienna Ironspot



Medium Ironspot #77



Medium Ironspot #46



Dark Ironspot



Manganese Ironspot



Grey Sands



Merlot Sands



Burgundy Sands



Sahara Sands



Autumn Sands



Orleans Sands

TEXTURES



Available in 1/2"
and 1" thick.

Smooth



Available in 1/2"
and 1" thick.

Velour



Available in:
• 5/8" thick
• Modular and Closure

Matt



Available in:

- 5/8" thick
- Modular and Closure

Vertical Score



Available in:

- 5/8" thick
- Modular and Closure

Artisan



Available in 5/8" and 1" thick.

Heritage

TEXTURES



Available in 1/2" thick.

Square Edge no Texture



KEYBACK DESIGN

To enhance in-place installation, Endicott thin brick features a keyback design, which provides a mechanical lock into the concrete for maximum durability and permanence.

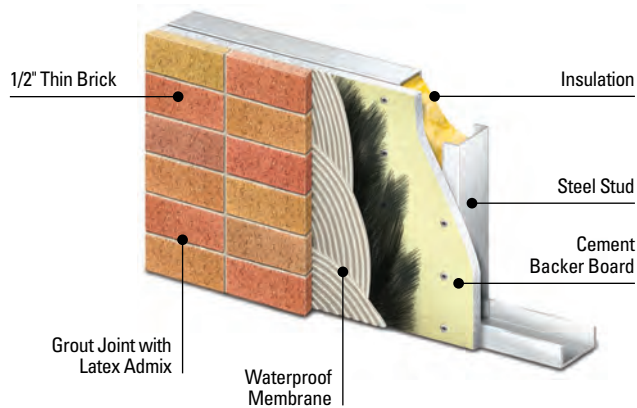
It also provides the advantage of increased freeze-thaw pull-out strength.

APPLICATIONS

Some of the more common application processes for thin brick include:

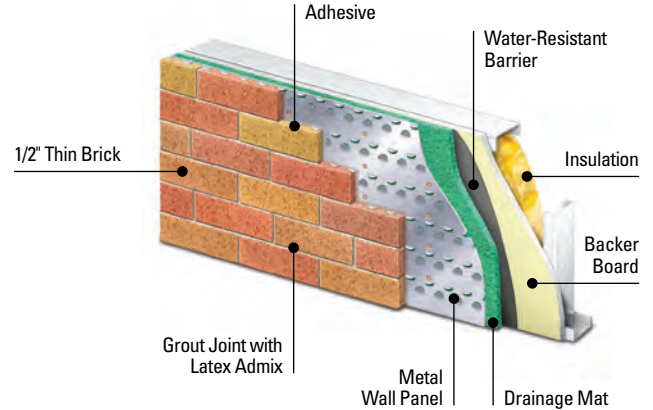
PANEL SYSTEM

Prefabricated or On-Site Panelization



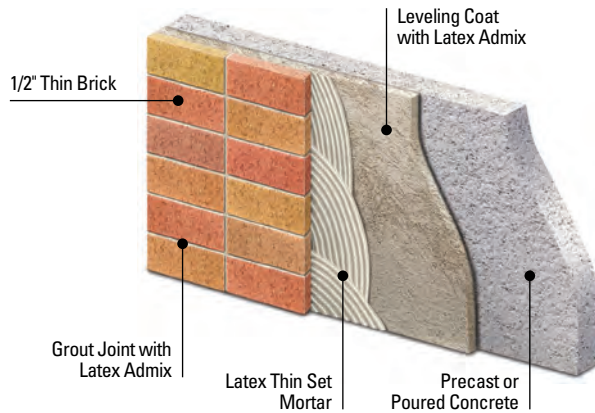
METAL PANEL WALL SYSTEM

Prefabricated or On-Site Panelization



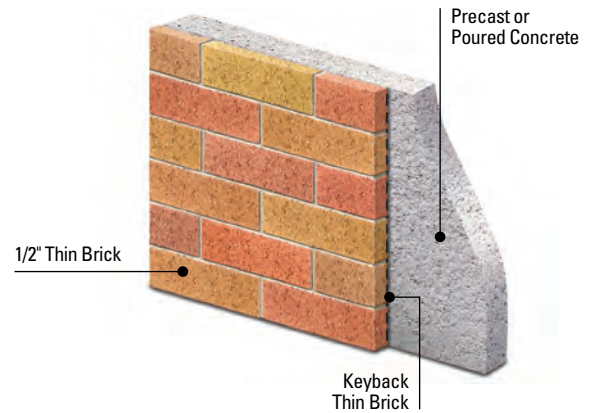
THIN BED SYSTEM WITH LEVELING COAT

Job Applied Over Precast or Poured in Place Concrete



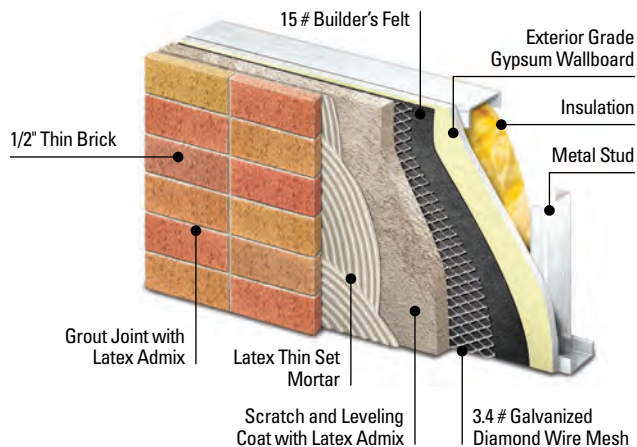
THIN BRICK SYSTEM

Embedded in Precast Concrete



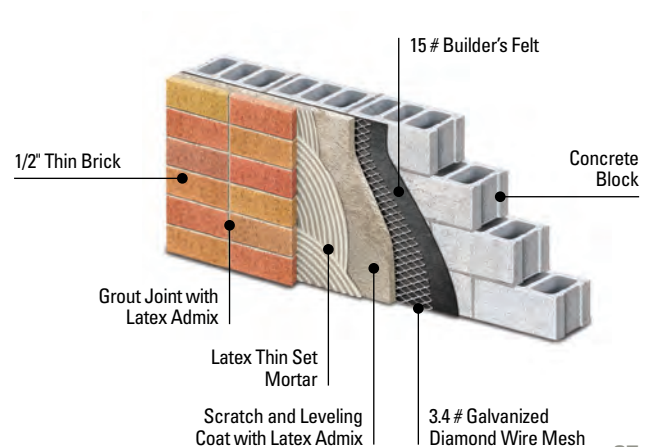
MORTAR BED SYSTEM

Prefabricated or On-Site Panelization



MORTAR BED SYSTEM

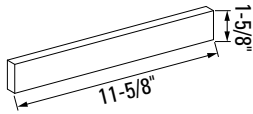
Concrete Block Infill Wall or Existing Masonry



SIZES

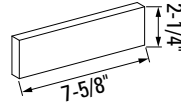
ROMAN

1-5/8" x 11-5/8"



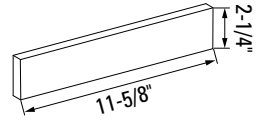
MODULAR

2-1/4" x 7-5/8"



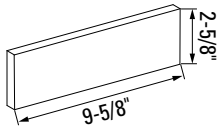
NORMAN

2-1/4" x 11-5/8"



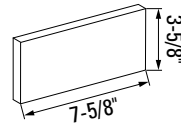
KINGSIZE

2-5/8" x 9-5/8"



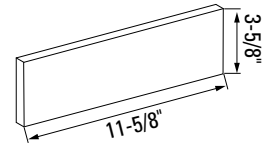
CLOSURE

3-5/8" x 7-5/8"



UTILITY

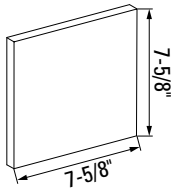
3-5/8" x 11-5/8"



TRIPLE

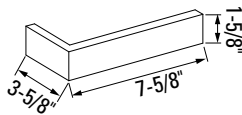
7-5/8" x 7-5/8"

NOTE: Available in 1/2" and 5/8" thick only.



BC1-5/8" 48

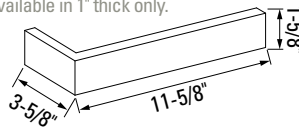
3-5/8" x 7-5/8" x 1-5/8"



BC1-5/8" 412

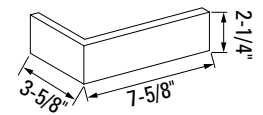
3-5/8" x 11-5/8" x 1-5/8"

NOTE: Available in 1" thick only.



BC2-1/4" 48

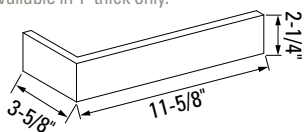
3-5/8" x 7-5/8" x 2-1/4"



BC2-1/4" 412

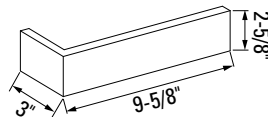
3-5/8" x 11-5/8" x 2-1/4"

NOTE: Available in 1" thick only.



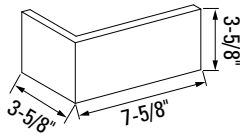
BC2-5/8" 310

3" x 9-5/8" x 2-5/8"



BC448

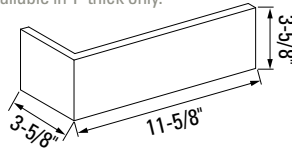
3-5/8" x 7-5/8" x 3-5/8"



BC4412

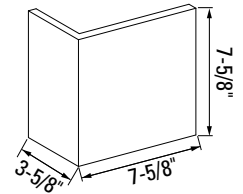
3-5/8" x 11-5/8" x 3-5/8"

NOTE: Available in 1" thick only.



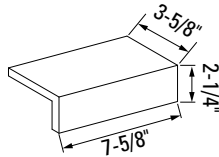
BC848

3-5/8" x 7-5/8" x 7-5/8"



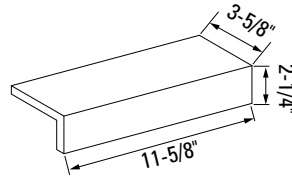
EDGE CAP A

3-5/8" x 7-5/8" x 2-1/4"



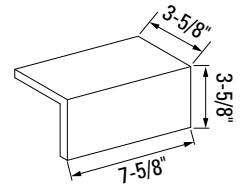
EDGE CAP B

3-5/8" x 11-5/8" x 2-1/4"



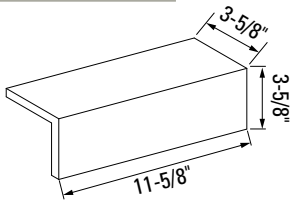
EDGE CAP C

3-5/8" x 7-5/8" x 3-5/8"



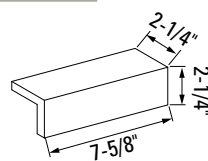
EDGE CAP D

3-5/8" x 11-5/8" x 3-5/8"



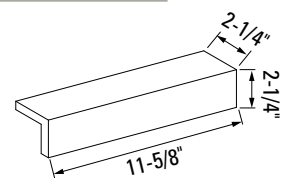
EDGE CAP E

2-1/4" x 7-5/8" x 2-1/4"



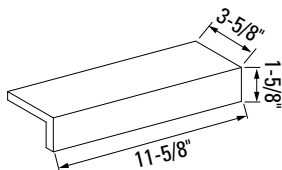
EDGE CAP F

2-1/4" x 11-5/8" x 2-1/4"



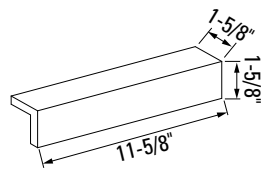
EDGE CAP G

3-5/8" x 11-5/8" x 1-5/8"



EDGE CAP H

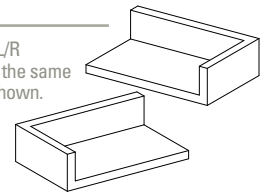
1-5/8" x 11-5/8" x 1-5/8"



EDGE CAP CORNERS

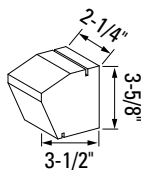
Left/Right

NOTE: 3-Sided L/R dimensions are the same as Edge Caps shown.



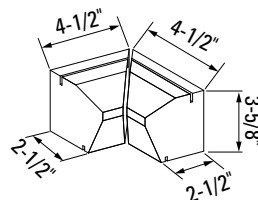
ROLOK SILL

2-1/4" x 3-1/2" x 3-5/8"



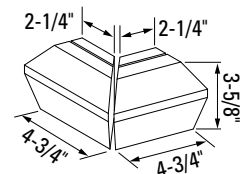
**ROLOK SILL
INTERNAL CORNER**

4-1/2" x 2-1/2" x 3-5/8"

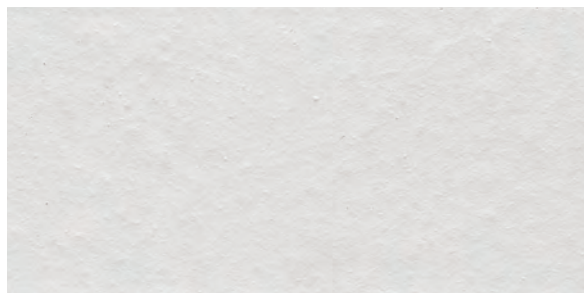


**ROLOK SILL
EXTERNAL CORNER**

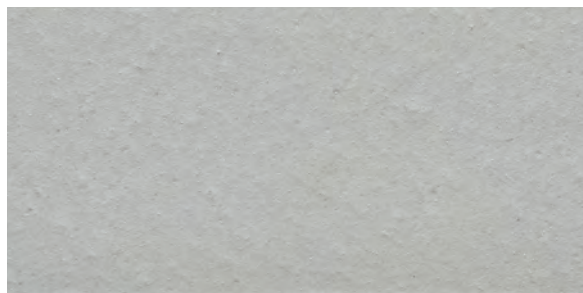
2-1/4" x 4-3/4" x 3-5/8"



GLAZED SERIES



SN-1



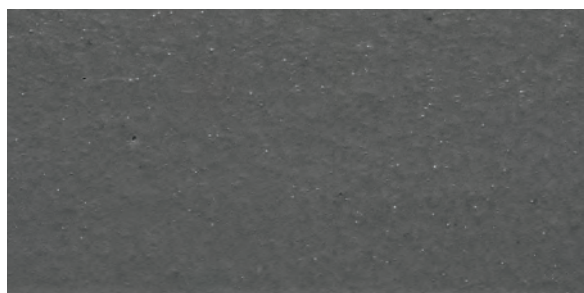
SN-2



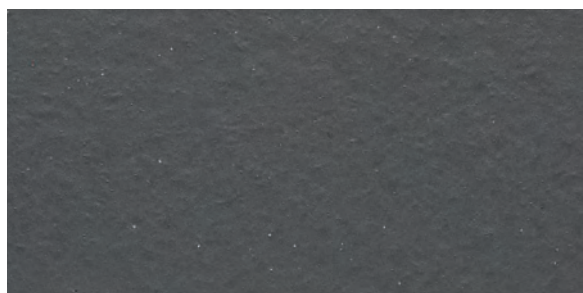
SN-3



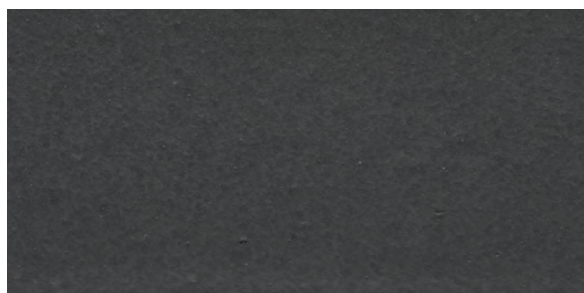
SN-4



SN-5



SN-6



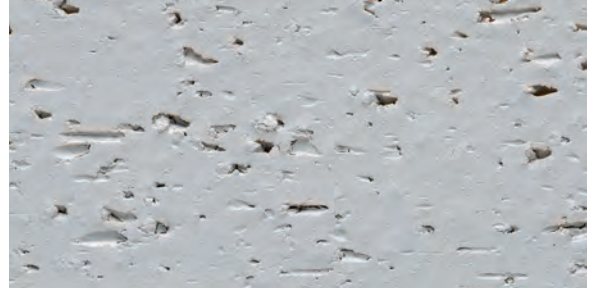
SN-7



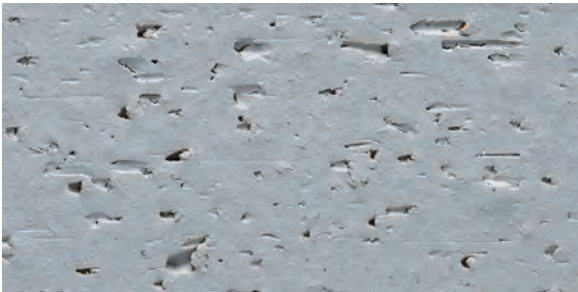
SN-8



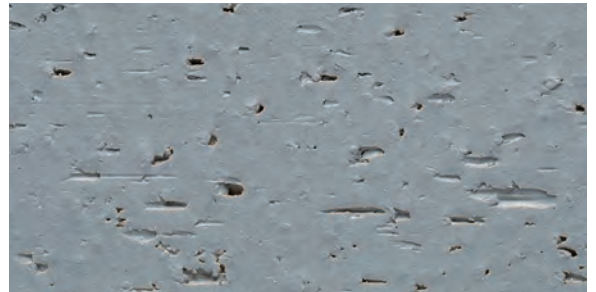
VC-1



VC-2



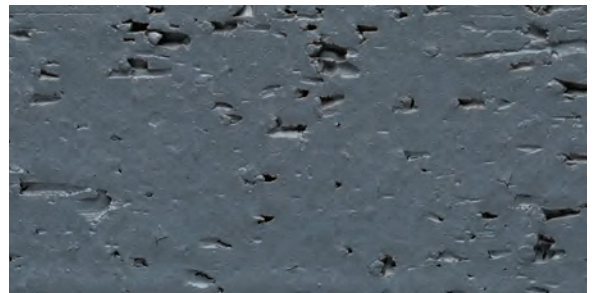
VC-3



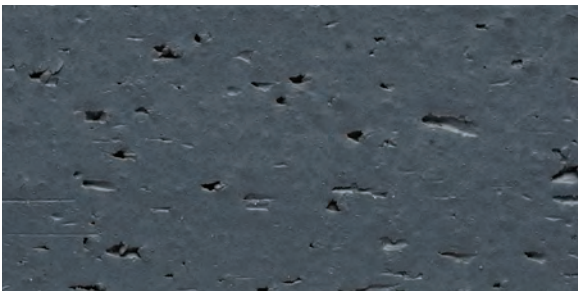
VC-4



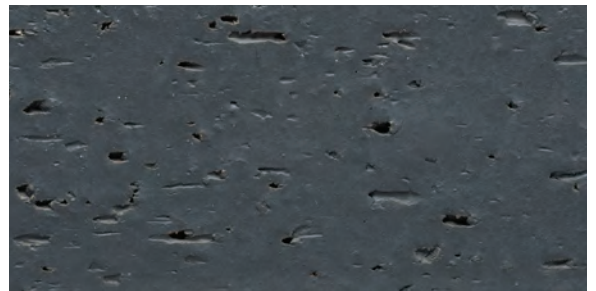
VC-5



VC-6



VC-7



VC-8

VILLANOVA UNIVERSITY



VILLANOVA
PENNSYLVANIA





PROJECT DETAILS

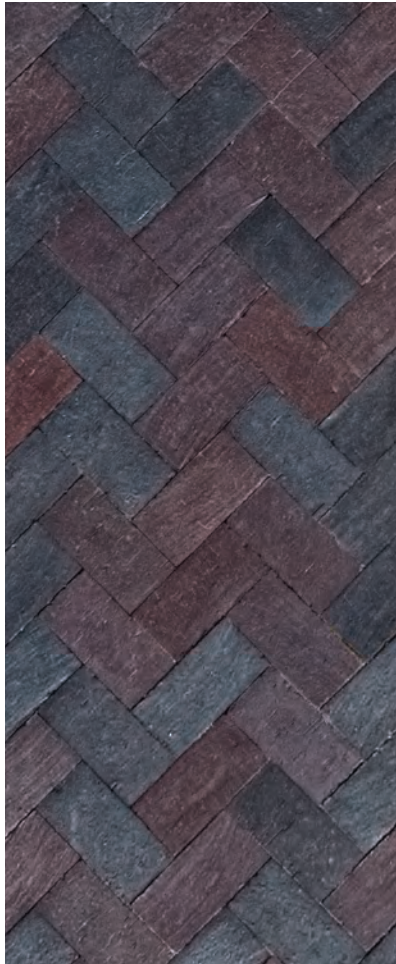
COLOR

Dark Ironspot
Medium Ironspot #46
Manganese Ironspot

SIZE/STYLE

2-5/8" x 4" x 8" Relieved/Lugged
2-5/8" x 4" x 8" Permeable

DUBLIN STREETSCAPE



DUBLIN
OHIO





PROJECT DETAILS

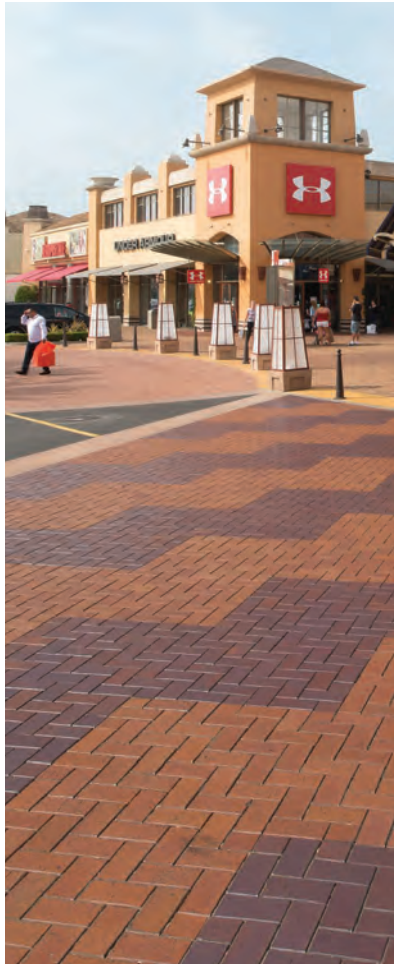
COLOR

Medium Ironspot #46
Manganese Ironspot
Dark Ironspot

SIZE/STYLE

4" x 8" Relieved/Lugged
4" x 8" Square Edge
4" x 8" Permeable

CITADEL OUTLETS MALL



LOS ANGELES
CALIFORNIA





PROJECT DETAILS

COLOR

Medium Ironspot #46
Dark Ironspot
Medium Ironspot #77
Bordeaux Blend
Coppertone
Copper Canyon

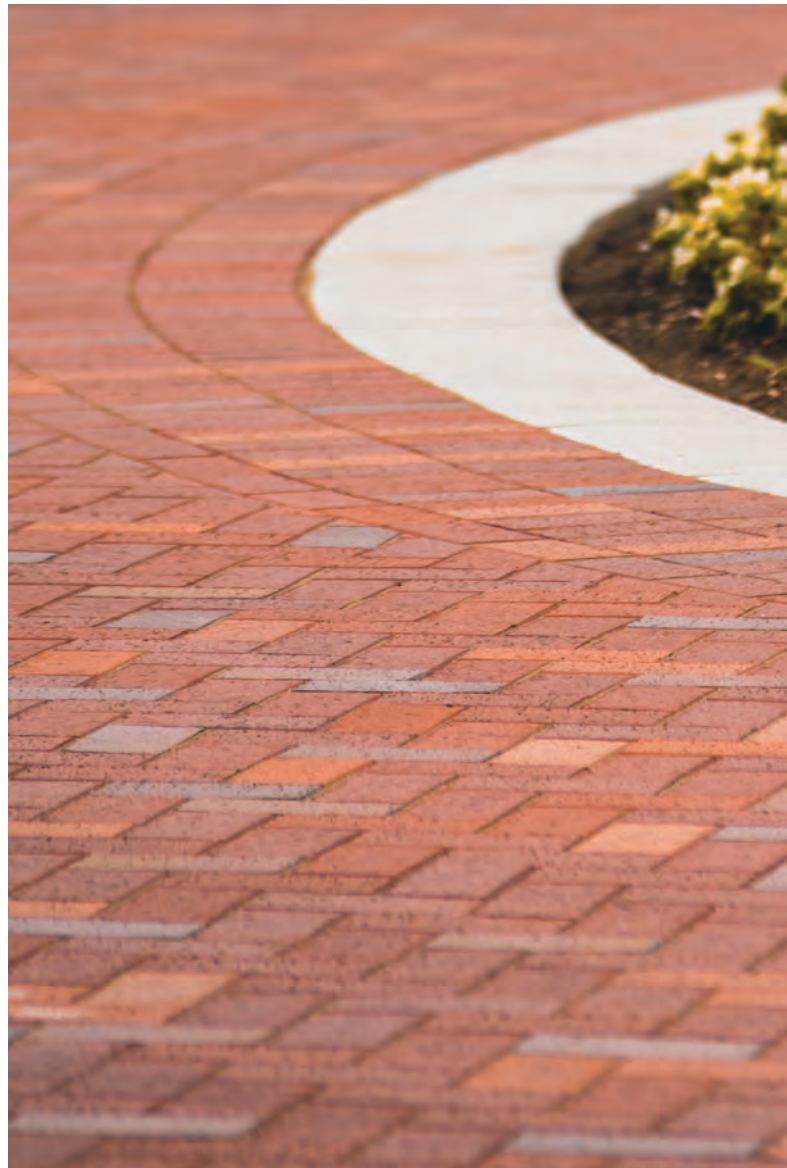
SIZE/STYLE

4" x 8" Relieved Lugged

CREIGHTON UNIVERSITY ROUNDAABOUT



OMAHA
NEBRASKA





PROJECT DETAILS

COLOR

Burgundy Blend
Red Blend
Rose Blend
Medium Ironspot #77

SIZE/STYLE

2-5/8" x 4" x 8" Relieved/Lugged

COLORS



Rose Blend



Red Blend



Burgundy Blend



Bordeaux Blend



Coppertone



Copper Canyon



Medium Ironspot #77



Medium Ironspot #46



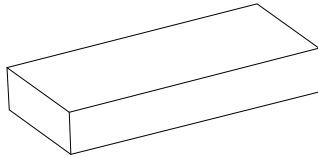
Dark Ironspot



Manganese Ironspot

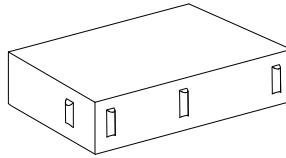
SIZES

4 x 8 PAVER



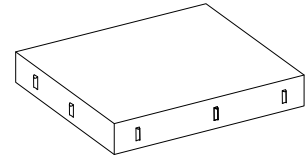
1-1/4" x 3-5/8" x 7-5/8" 2-1/4" x 3-5/8" x 7-5/8"

2-1/4 x 4 x 8 INVISI-LUG™ PAVER



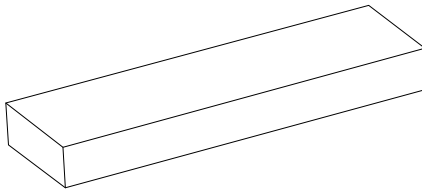
2-1/4" x 4" x 8"

8 x 8 INVISI-LUG™ PAVER



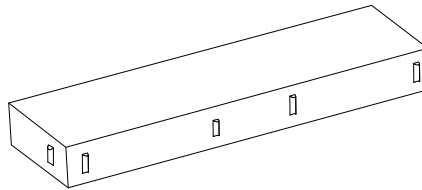
2-1/4" x 8" x 8"

4 x 12 PAVER



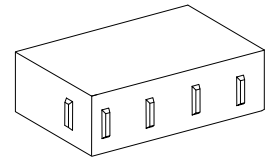
2-1/4" x 3-5/8" x 11-5/8"

4 x 12 INVISI-LUG™ PAVER



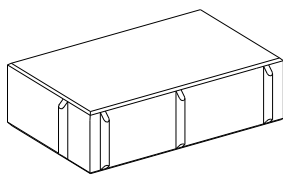
2-1/4" x 4" x 12"

2-5/8 x 4 x 8 INVISI-LUG™ PAVER



2-5/8" x 4" x 8"

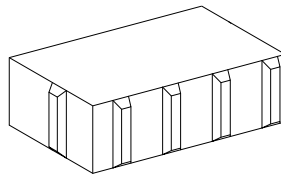
4 x 8 PERMEABLE PAVER



2-1/4" x 4" x 8"

*Lug sizes and configurations may vary.

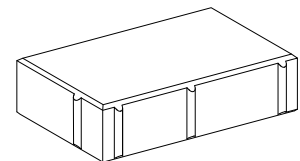
2-5/8 x 4 x 8 PERMEABLE PAVER



Effective: 2-5/8" x 4" x 8"
Actual: 2-7/8" x 4" x 8"

*Lug sizes and configurations vary.

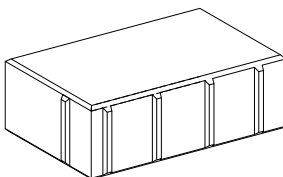
4 x 8 RELIEVED EDGE LUGGED PAVER



2-1/4" x 4" x 8"

*Lug sizes and configurations may vary.

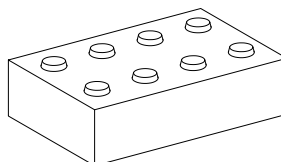
2-5/8 x 4 x 8 RELIEVED EDGE LUGGED PAVER



Effective: 2-5/8" x 4" x 8"
Actual: 2-7/8" x 4" x 8"

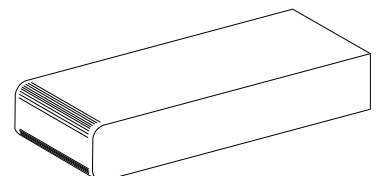
*Lug sizes and configurations may vary.

ADA HANDICAP DETECTABLE WARNING PAVER



2-1/4" x 3-5/8" x 7-5/8"
2-1/4" x 4" x 8"

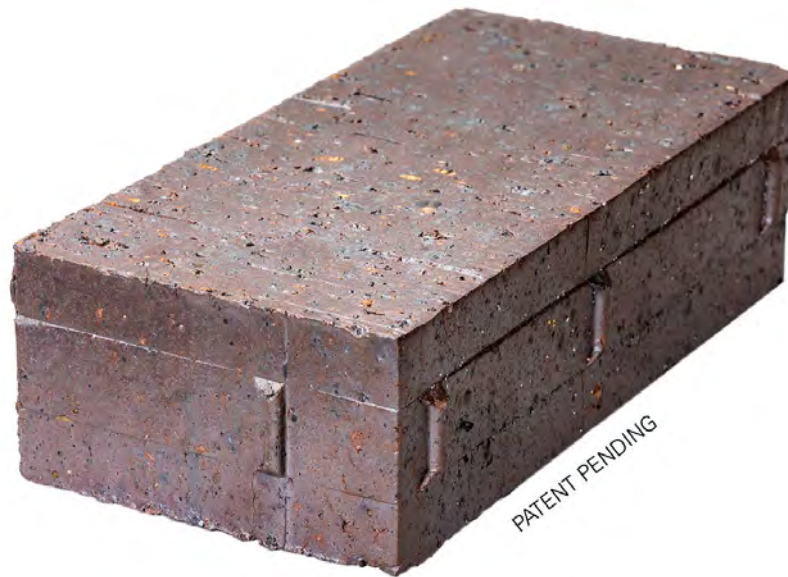
PAVER STEP TREAD



2-1/4" x 3-5/8" x 7-5/8"
2-1/4" x 3-5/8" x 11-5/8"

INVISI-LUG™

WHO SAYS YOU CAN'T HAVE IT ALL?



THE NEW INVISI-LUG™ EXTRUDED CLAY PAVER GIVES YOU EVERYTHING YOU HAVE WANTED IN A PAVER:

- A recessed lug that guarantees proper joint spacing to eliminate chippage.
- Because its lugs are recessed it leaves a crisp, square edge.
- Eliminates the need for buying plastic spacers, saving substantial cost.
- Since proper joint spacing is automatic, the speed of installation is improved.
- Improved joint line appearance.
- Especially in vehicular applications, full and proper joint spacing on sand-set pavers promotes interlock.

INVISI-LUG™ PAVER BENEFITS ARE IN ADDITION TO THE TRADITIONAL BENEFITS OF USING ENDICOTT CLAY PAVERS:

- Vibrant colors, including ironspots, that other materials cannot mimic.
- Colorfast.
- Durable.
- Incredibly high compressive strength.

WITH ENDICOTT'S INVISI-LUG™ PAVERS, YOU GET EVERYTHING YOU HAVE WANTED.



Endicott Clay Products Company

P.O. Box 17 Fairbury, Nebraska USA 68352
P 402.729.3315 F 402.729.5804

Endicott Thin Brick & Tile, LLC

P.O. Box 645 Fairbury, Nebraska USA 68352
P 402.729.3323 F 402.729.5804

For other literature, samples and the name of your nearest distributor, contact Endicott today.

