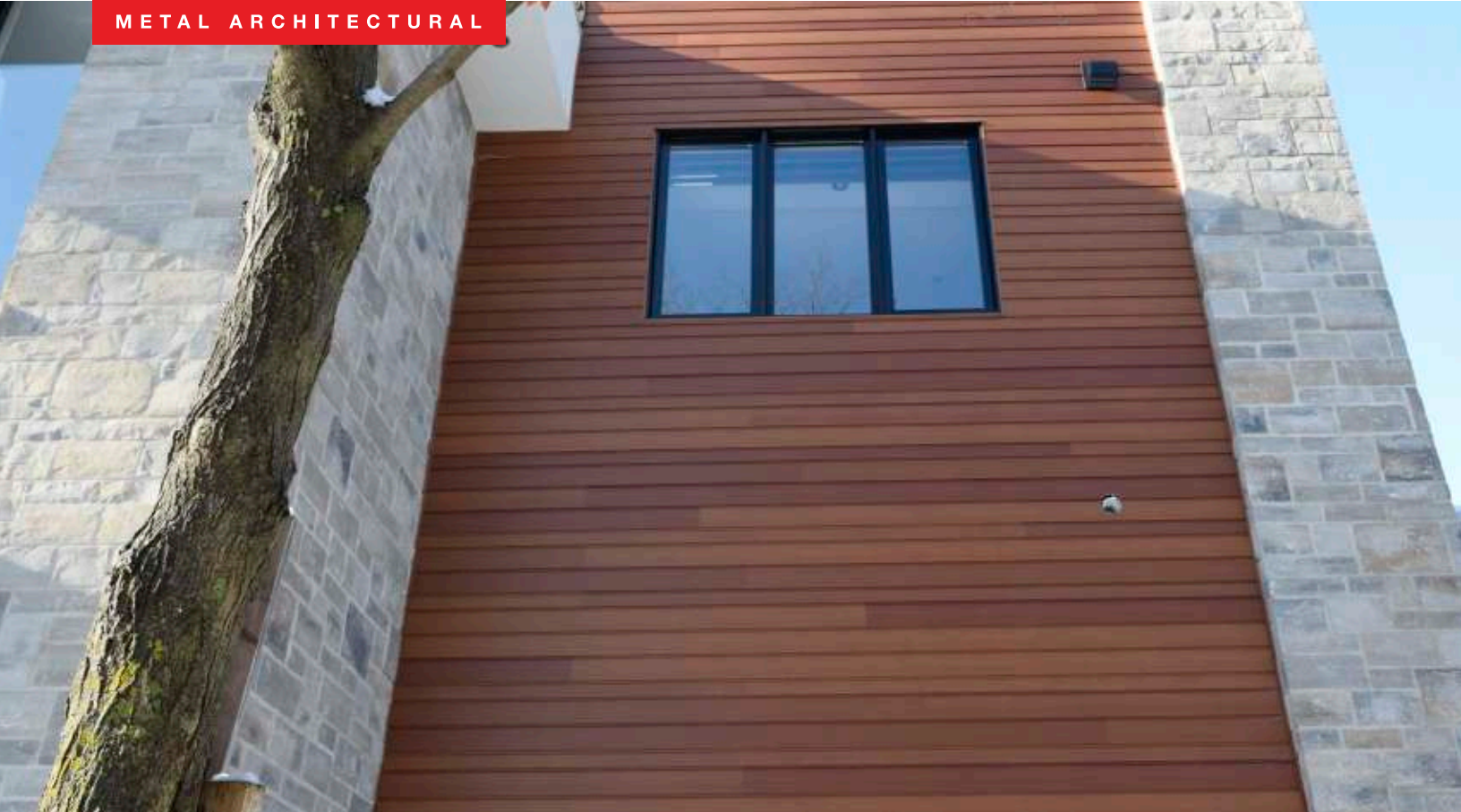


# MAC

METAL ARCHITECTURAL



## Installation guide

---

**NORWOOD &  
NORWOOD MINI**

November 2020

## PROTECTION

The material may have sharp edges. We recommend using protective equipment, including safety boots, a helmet, goggles, and gloves.



## WARRANTY

FOR THE WARRANTY TO BE APPLICABLE, INSTALLATION MUST BE CARRIED OUT IN ACCORDANCE WITH THE STANDARDS SET OUT IN THE UPDATED BUILDING CODE, ALONG WITH THE MANUFACTURER'S RECOMMENDATIONS.

In the event that a problem occurs during the installation of the profiles, it's important to notify the supplier before the installation of 144 ft<sup>2</sup> (2 boxes), to make sure that the warranty will apply. Over 144 ft<sup>2</sup>, the responsibility for the installation lies with the installer.

## INSPECTION

When you receive your order, it is important to inspect the product immediately. If there are any issues with your order or if panels arrive damaged, you should inform your supplier as soon as possible.

## HANDLING

Handle the box with care, ensuring to move it only vertically.



## STORAGE

To keep the aesthetic and physical properties of MAC Metal Architectural's Norwood metal siding intact, it is important to follow some basic rules for storage.

If the panels cannot be installed immediately upon delivery, store them indoors in a dry, well-ventilated area. Customers are responsible for the risks involved with storing panels outdoors. However, if the material must be stored outside, here are a few recommendations:

Place the panels in an area with no direct exposure to the sun or to extreme temperatures, as these factors may cause the protective coating to further adhere to the panels. This can make the coating more difficult to remove and may leave glue marks on the panels.

We also recommend using a tarp to protect the materials from temperature fluctuations.

## PRODUCT TESTED

Tested as per CAN/ULC-S135 for use in non-combustible constructions

## INSTALLATION WARNING



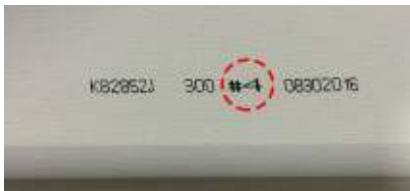
### ZIP R-SHEATHING

Installation of the MAC siding products on ZIP R-sheathing panels and other dual composite panels with a softer material than wood is not recommended. This type of panel doesn't offer a good rigid mounting surface for MAC products and will allow for movement and deformation under varying weather and sun exposure transferring into oil canning.

## WOOD COLLECTION

Each color of the Wood collection includes six planks with varying grains and nuances. Please ensure that the planks are installed in random order. Each plank is stamped on the reverse side with a number from 1 to 6 in bold type preceded by the pound sign. If you pay particular attention to this when installing the siding, you will undoubtedly optimize the look of your project. In addition, do not put planks in numerical (i.e., 1, 2, 3, ...) order. It is recommended to mix the numbers in random sequences to obtain an optimal result.

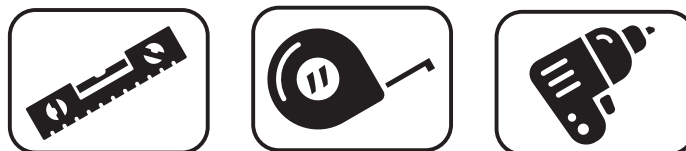
\*Please note that the boxes come pre-mixed and that each contains twelve 12-foot planks, for a total of 64.5 sq. ft. for Norwood and 41.5 sq. ft. for NORWOOD MINI.



### 1. TOOLS

To complete the work correctly, you will require a MAC cutter, a MAC metal folder or a pair of folding tongs, a drill, and a pair of sheet cutters. You will also need a level, a tape measure, and safety goggles. MAC Metal Architectural equipment is available at the MAC supplier nearest you.

The screws must conform to ASTM B117-2000h. The use of MAC Anticorrosion Wood Screws or MAC Anticorrosion K-LATCH Screws (1 1/8 or 2 1/2 inches), or screws designed for these profiles, is highly recommended by the manufacturer.



## 2. ACCESSORIES

Here is a list of accessories required to install and finish Norwood siding:

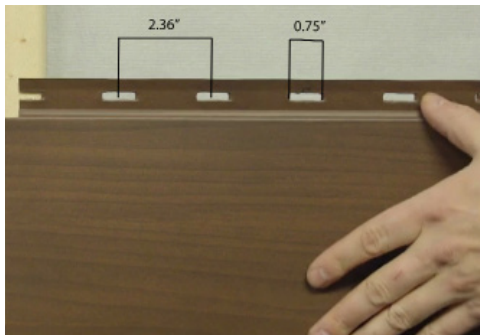
- MAC wood screws or metal screws, depending on the type of project
- Steel roll\*
- Moldings

\*Steel rolls can be provided for finishing work

### PANEL FEATURES

A. 0.16 in-wide screw rail along the entire length of the structure

B. 3/4 in holes for screws, with 2.36 in between each hole (center to center).



## 3. PREPARATION

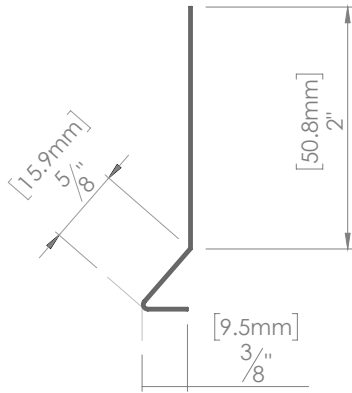
Before beginning the first step, ensure that the construction of the surface to be covered with Norwood siding complies with all current industry standards.

Please check with your local authorities regarding the installation of metal or wood furring. If they are not needed, then it's okay not to install them.

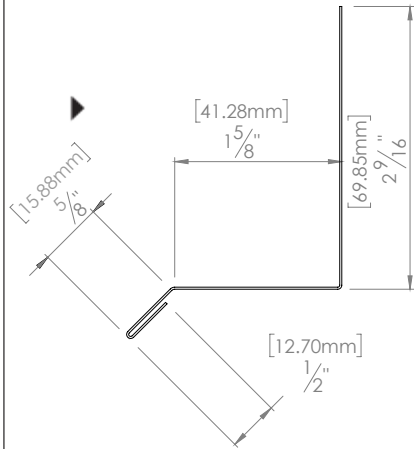
Also, make sure to refer to the building code of your province.

## Norwood TRIM & FLASHING

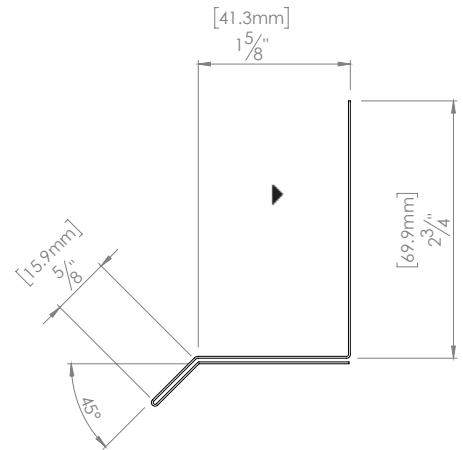
**No. M10D (Norwood)**  
 Starting strip



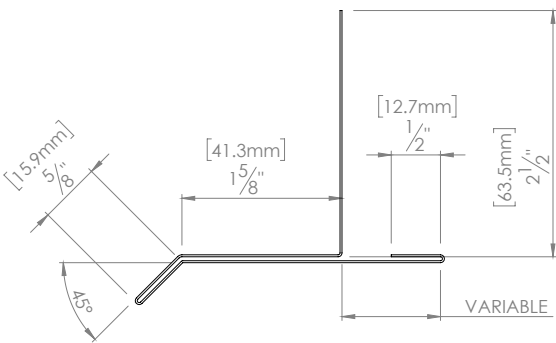
**No. M50CD (Norwood, MS 14 & Norwood)**  
 Flashing drip



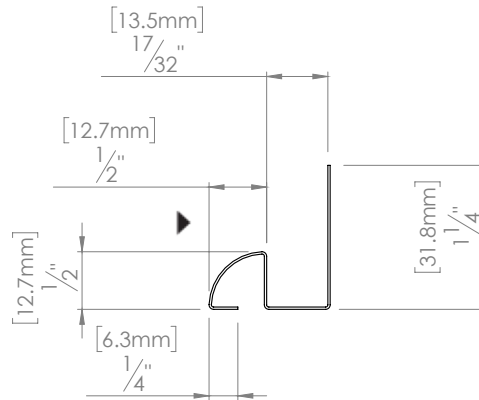
**No. M53CD (Norwood, MS 14 & Norwood)**  
 Double Flashing drip



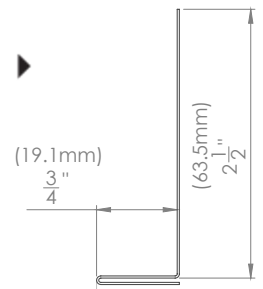
**No. M56CD (Norwood, MS 14 & Norwood)**  
 Extended drip flashing w/variable



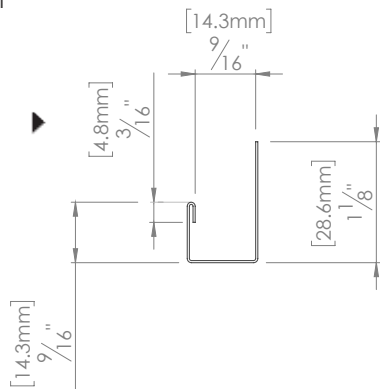
**No. M22D (Norwood)**  
 Inside corner or QJ



**No. M14CD (Norwood, MS 14 & Norwood)**  
 L Trim



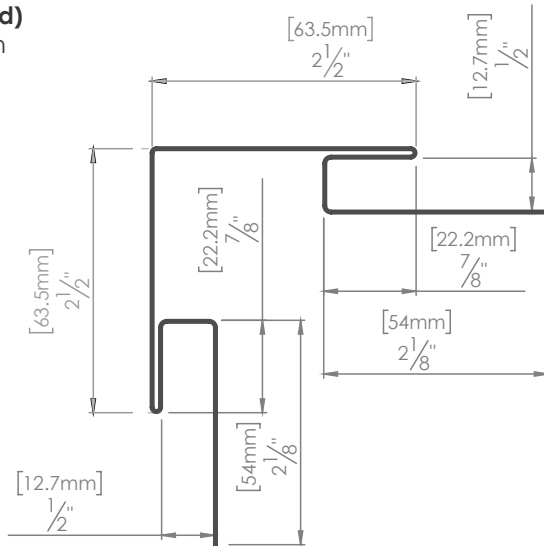
**No. M01D (Norwood)**  
 J Trim



## Norwood TRIM & FLASHING

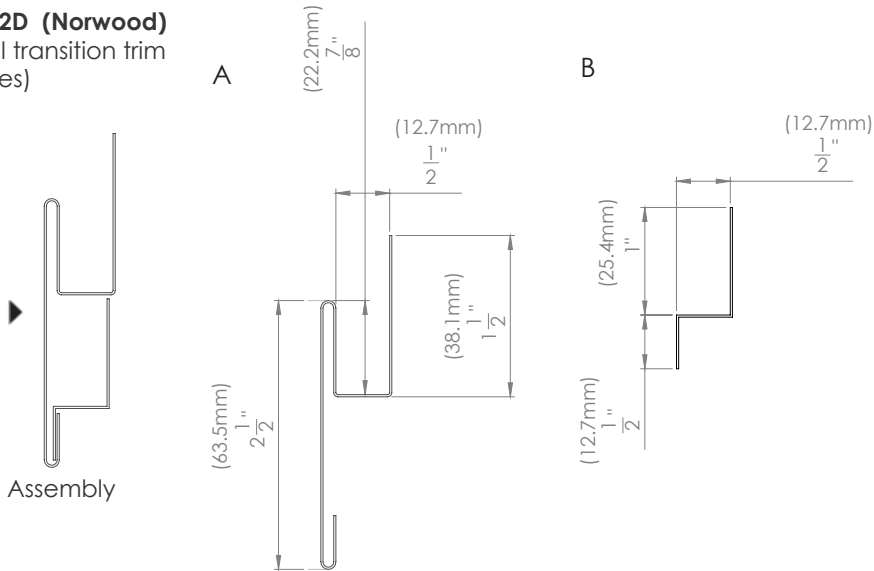
### No. M20D (Norwood)

Outside corner with  
 integrated J trim



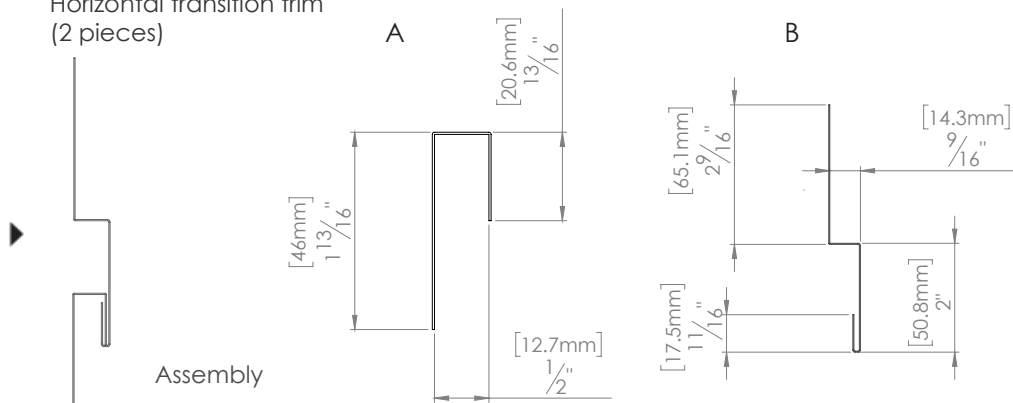
### No. M12D (Norwood)

Vertical transition trim  
 (2 pieces)



### No. M13D (Norwood)

Horizontal transition trim  
 (2 pieces)



## 4. INSTALLATION

Before beginning to install the siding, ensure that your walls are square and level.

Norwood or Norwood Mini profiles wall siding can be installed horizontally, vertically or diagonally.

### 4.1 Starter Strips

Using a laser-guided level, a chalk tracer or a standard level, trace a reference line as a guide to ensure the starter strip is in place.



Now, fix the M10D starter strips 3 inches above where you want your wall to begin. Use flathead MAC Anticorrosion Wood Screws or MAC Anticorrosion K-LATCH Screws (1 1/8 or 2 1/2 in). Secure the strip using one screw. When you are level, screw it in place.

For a vertical installation, replace the M10D starter strip with an M50D drip strip, no starter strip will then be necessary.

\*\*Ensure that the starter strip is level, as it will serve as a guide for the rest of the installation





## 4.2 Screws

Tighten screws by applying moderate pressure to the metal to allow expansion. Screws should not be placed under upward or downward pressure to avoid deforming the siding and/or opening the joints.

\*Screws should be installed every 16 inch or 24 inch in the middle of the pre-cut holes, to allow expansion.

### SCREWING

Use the MAC Anticorrosion Wood Screw or MAC Anticorrosion K-LATCH Screw (1 1/8 or 2 1/2 in) depending on the type of furring or surface to be fastened. The screws should be set with moderate contact on the clip part of the panel to avoid impeding the expansion of the metal. The screws must not exert any upward or downward pressure to avoid deforming the siding or opening the panels at the joints. A systematic check of the work must be done for every three or four panels placed in height so as to detect possible anomalies. Remove the protective film from the siding prior to installation to facilitate a good visual inspection of the quality of the installation and in order to make appropriate corrections as installation progresses.



A059.250



A060.250

If a section of furring strip appears to not be aligned, we recommend leaving some space between the wall and the furring strip of the metal siding once the screw has been inserted. This will avoid placing too much pressure on the product, which can cause an undesired effect.

### 4.3 Plastic membrane

Wherever possible, only remove the plastic membrane once the installation is done.



### 4.4 Cutting

If you need to cut the panels, use the specialized MAC Guillotine especially design for Norwood siding and recommended by MAC Metal Architectural. You can also use, if needed, a snip or a shear.

\*The use of an electric saw or an electric grinder is not recommended or covered by MAC Metal Architectural warranty.



### 4.5 Joints

Only factory cuts should be used for wall joints and cutting on site should only be done for wall moldings. Leave a 1/8- to 1/4-inch space between two females to allow for expansion.



## 4.6 Expansion

At the cross joint of the panels, space must be provided for expansion or contraction of the material depending on the temperature during installation. A 1/8- to 1/4-inch space must be provided between two female panels.

In the case of a new wood building with more than one storey, it will be necessary to provide a transition molding on each floor; on a steel structure install a transition molding every 30 ft. In the case of a very long wall, it is recommended to install a vertical transition molding every 30 ft.

## 5. INSIDE CORNER

### 5.1 L steel corner

Apply an L-shaped steel wedge directly to the weather barrier and/or the furring.



### 5.2 QJ Trim inside corner

Proceed with the installation of the siding on one of the walls, fix in place the QJ Trim for the interior corner, M22C. Continue with the installation of the panels, making sure to leave a 1/8 in space for material expansion, on the other wall by sliding the planks at the end of the QJ molding inside corner.



## 6. OUTSIDE CORNER

Install the outside corner with integrated J-Trim, M20D. Fasten the moulding in place with screws on each side, you can proceed with the rest of the panel installation at the desired time.



## 7. WINDOW FRAMING

### 7.1 Adjustment

Measure and adjust the plank as necessary before securing it in place.

In case the plank need adjustment, cut the plank to the height necessary. Then attach the cut-out upside down to give more support to the plank.

Follow the same steps for vertical installation.



### 7.2 Step 2. Soffit J Trim installation

If the wall you are covering has a window, first install the J-Trim molding , M01D on three sides of the window. Then install a drip molding above the window frame.



## 7. WINDOW FRAMING

### 7.3 Around the window

Continue with the installation of the panels on each side of the window, taking care to continue to install panels of various shades and tones in a random sequence in order to avoid creating a repetitive effect. Refer to the numbering at the back panels.

Follow the same steps for vertical installation.



### 7.4 The top of the window

We recommend the installation of a drip moulding, before installing the first panel from the top of the window.

In case the panel does not reach the full height, cut the panel make sure to provide an additional ½ in. for a 45-degree bend. Then fix in place the remaining cut trim upside down to provide more support. Then clip the folded panel into the extra piece.

As shown in section 7.2.



## 7. WINDOW FRAMING

### 7.5 The top of the window



## 8. FINISHING A WALL

### 8.1 Adjustment

Measure and adjust the final plank accordingly, using an electric shear, before attaching it to the J-Trim moulding M01D.



If the plank isn't flush with the height of the wall, place the extra piece backwards onto the J-Trim moulding, M01C to add support to the plank that was cut.





For more information on how to install the Norwood profile, visit the PRO section of our website, at [MAC-metalarchitectural.com](http://MAC-metalarchitectural.com). There you will find a bank of technical information on the profile such as a series of installation videos, a moldings catalogue and access to technical drawings.



MAC Metal Architectural  
3099, Bernard-Pilon (Quebec) J3G 4S5  
T. 450 464-5486 | T F. 450 464-4538  
[info@macmetalarchitectural.com](mailto:info@macmetalarchitectural.com)  
[MACmetalarchitectural.com](http://MACmetalarchitectural.com)