

INSTALLATION GUIDE

Architectural Plank



ATTENTION

PROTECTION

The material may contain sharp edges. For this reason, we recommend that you wear the appropriate protective equipment: safety harness, safety boots, hard hat, safety glasses, and gloves.



ORDER INTAKE & INSPECTION

It is the customer's responsibility to inspect the order upon receipt. In the event of an error or damage to a panel, it is important to notify the distributor as soon as possible so that the situation can be rectified.

PACKAGING HANDLING

To limit the risk of material breakage, it is important to follow certain rules when when handling packaging:

1. Keep movement of materials to a minimum before installation.
2. Always take particular care when transporting panels from one point to avoid bending the panels.
3. Use a forklift with forks adjusted to maximum width to handle panel packs of up to 20 ft.
4. Beyond this length, use a fork-lift truck with boom and loading bar, or a crane.



HANDLING PACKAGES
OF UP TO
MAXIMUM OF 20 FT



HANDLING PACKAGES
OF 20 FT AND OVER

STORAGE

To preserve the aesthetic and physical properties of MAC Metal Architectural Planks, it is important to observe certain storage rules.

If the planks cannot be installed immediately after delivery, store them indoors in a dry place, on a flat, well-ventilated surface. Keep movement to a minimum to minimize the risk of breakage.

Outdoor storage is the customer's responsibility. If outdoor storage is absolutely necessary, place the planks flat in a location that is not directly exposed to sunlight or extreme temperatures. These factors can cause the protective film to adhere more tightly to the planks, making it difficult to remove and leaving traces of adhesive on the surface of the product when removed. In addition, the accumulation of stagnant water on packaging can contribute to its deterioration, so it's vital to protect your order.

It is important to follow these recommendations:

1. If possible, choose a level, out-of-the-way location where the planks will not interfere with work on the site, and with limited exposure to the sun.
1. Cover the floor with plastic sheeting to prevent moisture from the ground from reaching the planks.
1. Place planks approx. 6 in (152 mm) from the floor to allow air circulation.
1. Raise part of the planks to allow rainwater to run off.
1. Protect the planks with a cloth. Do not use plastic, as this can lead to condensation.

THE PERFECT STYLING COMPLEMENT FOR YOUR PROJECT

Combining modern aesthetics with incomparable durability, our Architectural Planks are designed to withstand the most extreme weather conditions, ensuring exceptional longevity. No more worries about frequent maintenance associated with natural wood, thanks to our 86% recycled and 100% recyclable North American steel. Bring your most creative ideas to life and transform your driveway, garden or terrace into a distinctive, personal expression with our architectural planks. They are designed for maximum flexibility and minimum maintenance.

To help you realize your project, MAC offers a specially designed fastening system for its Architectural Planks. The planks can be recut to suit your design up to a minimum length of 3 feet. This adaptability ensures that our products fit perfectly with your specific needs, no matter how complex your design.

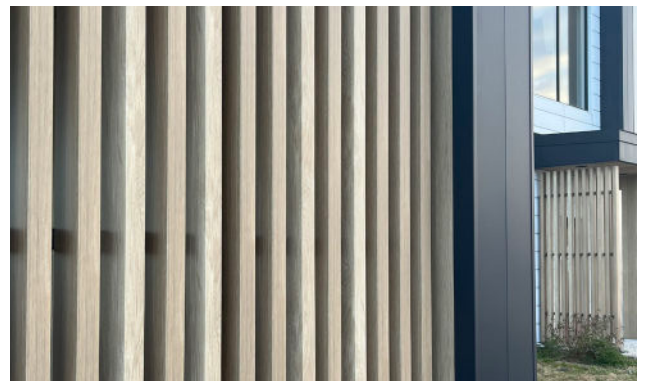
Additionally, custom fittings can be made by a steel professional, such as a wrought metal specialist or a tinsmith, to perfectly meet the requirements of your design. This customized approach ensures that every detail of your project is considered, thus providing a solution that perfectly meets your specifications.

Here are just some of the possibilities our Architectural Planks have to offer:

OPEN-WORK VISUAL SCREEN

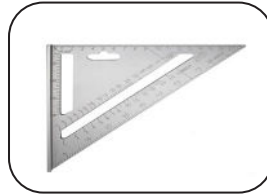
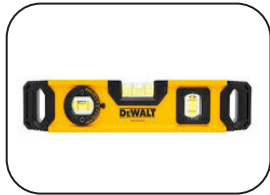


COMPLEMENTARY ACCESSORY



1. TOOLS

To properly carry out your work, you will need a screwdriver, a pneumatic or manual riveter, a square, as well as a metal blade (following the cutting recommendations indicated on our website). You'll also need a level and a tape measure.



2. CONTENT OF BOX

Here is the list of components necessary for an easy installation of the planks.

- Architectural Planks (SLIDG24) | Minimum quantity of 14 | Length of 12 feet
- Fixation Kit | Available individually (ABLID) or in a pack of 10 (ABLID.10)
- Caps | 2 caps are included per slat, the others are sold in packs of 10 (ACLID.10)
- Drilling guide (APGLID) | 2 guides included per order. Additional guides available on request.
- Screws



**FIXATION KIT INCLUDES
(NOT INCLUDED)**

1 x L-shaped fixing bracket,
2 x bolts,
2 x rivet nuts,
2 x painted-head wood screws



**CAPS
(2 INCLUDED PER PLANK)**



**PLANKS DIMENSIONS
(14 MINIMUM)**

Gauge | 24 gauges
Width | 2 in (50.8 mm)
Depth | 5.25 in (133.35 mm)
Length | 144 in (3 657.6 mm)

4. PREPARATION

Before installation, it's important to prepare the planks properly. Here's how:

1. Planks are sold in 12-foot lengths. Depending on the look you want, you can cut them to the desired length, up to a minimum of 3 feet.

FIXATION KIT
RECOMMENDED
PER PLANK LENGTH

Plank from 3 ft to 6 ft long = minimum of 2 per plank
Plank from 6 ft to 9 ft long = minimum of 3 per plank
Plank from 9 ft to 12 ft long = minimum of 4 per plank

2. When installing brackets, please maintain a maximum distance of 5 feet between each.
3. Maintain a maximum distance of 18" between the bracket and the end of the plank.
4. Depending on the siding on which the planks will be installed, make sure you have a suitable screw base.

5. INSTALLATION

For a perfect installation, make sure you follow the steps below in the right order.

In addition, use a laser level as a guide to height and a level to ensure that the plank is straight throughout the installation

Once you've determined the distance between each plank, repeat the steps below for the rest of your installation.



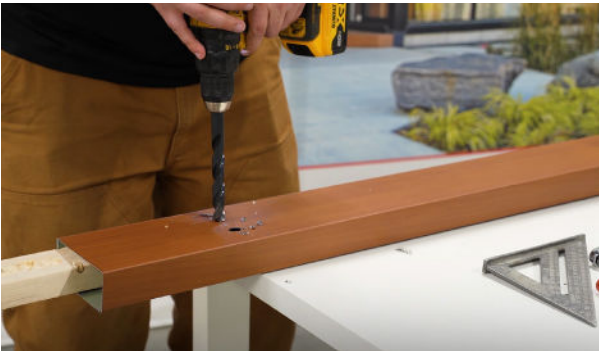
5.1 STEP 1 | BRACKET MEASUREMENT



To start the installation properly, mark the location where the first fixing bracket will be positioned.



To assist you, use the provided template to drill your first guide holes.



Before enlarging the holes to 9/16 inch (or 14 mm), place a piece of wood inside the plank to protect the other side.

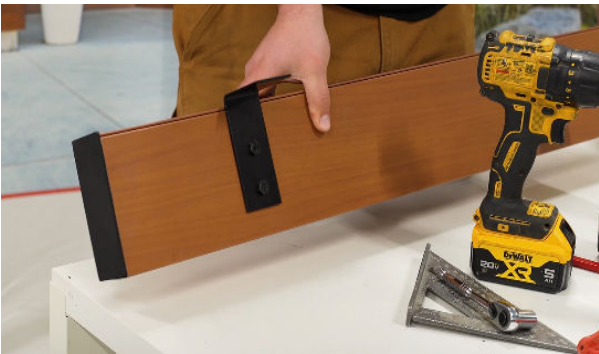


Secure the rivet nuts in place using a pneumatic or manual M8-1.25 rivet tool.

5.2 STEP 2 | FIXATION OF PLANKS



Secure the fixing bracket using the provided M8-1.25 x 20mm bolts, ensuring alignment with a square.

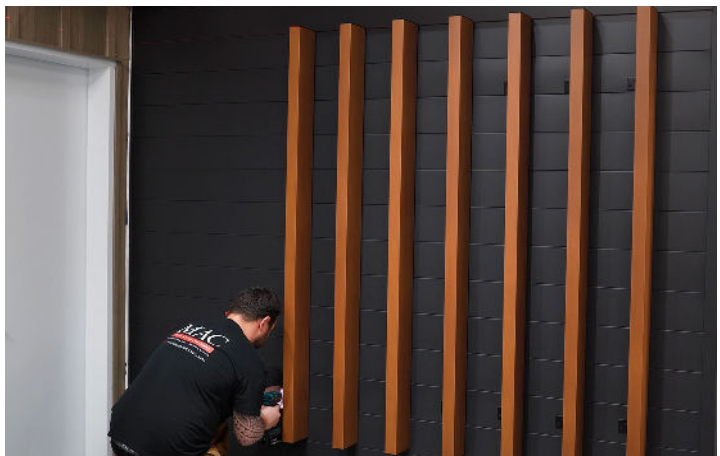
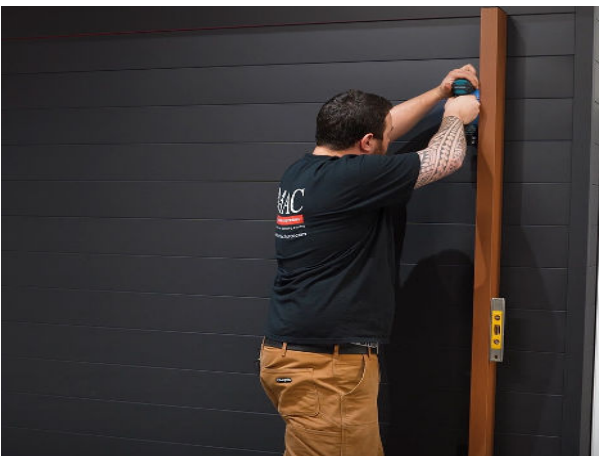


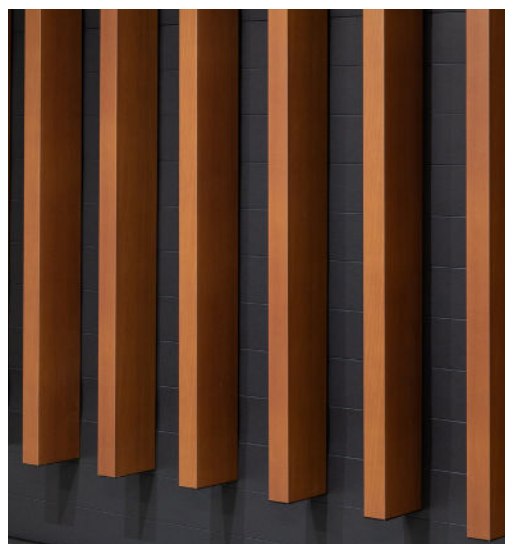
Next, insert the caps at the ends of the plank. Add a bead of sealant inside the plank to hold the cap in place. Repeat these steps for all the brackets.

Once the preparation is complete, proceed with the installation of the planks.



Use a laser level to guide you on the height line, then use a spirit level to ensure the planks are straight.





For more information on the installation of the Farmhouse Series, visit the PRO section of our website, MACmetalarchitectural.com or our Youtube Chanel.

You will find a bank of technical information on the profile, such as a series of installation videos, molding guides as well as access to technical drawings.

MAC
METAL ARCHITECTURAL

MAC Metal Architectural
5975 Ch. de la Savane,
Saint-Hubert, QC J3Y 0X1
T. 450 464-5486 | T F. 450 464-4538
info@MACmetalarchitectural.com
MACmetalarchitectural.com