

TIER®

Natural Stone **Made Simple**

ULTRA PANEL SYSTEM
NOVA PANEL SYSTEM
INSTALL GUIDE

trendo



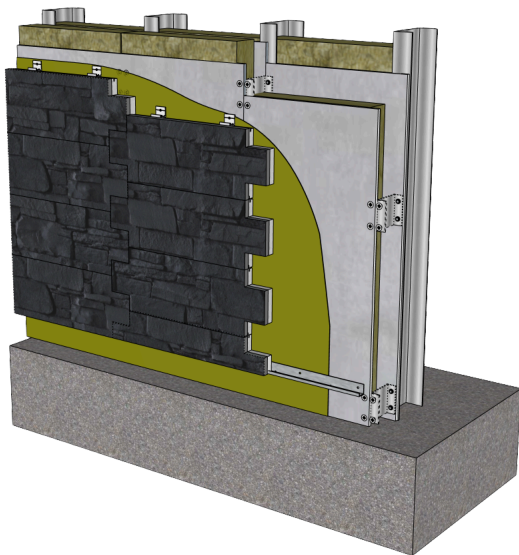
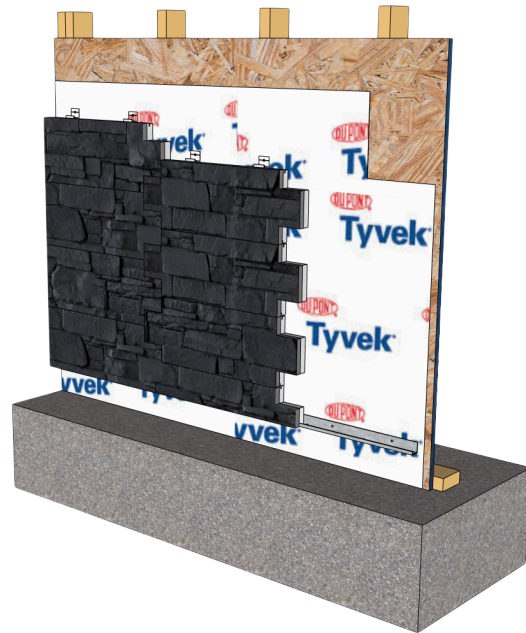
METHODS OF CONSTRUCTION

MODULAR SYSTEM

TIER® Panel System is a modular panel system and can be installed with various interior and exterior wall assemblies.

TIMBER FRAME MECHANICALLY FASTENED

TIER® ULTRA/NOVA panels can be mechanically fastened to timber frame structures using a water-vapor barrier for added protection and durability. Panels can be mechanically fastened to timber frame structures. Use a Weather Resistant Barrier (WRB) in two layers behind the stone for added protection and durability.



STEEL FRAME MECHANICALLY FASTENED

TIER® ULTRA/NOVA can also be fastened to an approved Building Board which is screwed to the Structural Steel Frame therefore eliminating the need for a structural wall.

INSTALLATION

1. PREPARATION

Note: Protect surface areas or plants that could be damaged during the stone installation.

Prepare the Work Area — Layout stone and materials near the installation area prior to application (25 to 30 sq.ft. of stone is typical). Layout stone to the desired blending of sizes shapes and colours similar to how it will be applied to the wall. Be sure to mix stones from different boxes and wash stone before installation (if required) to remove dust or dirt that may have gathered (especially for interior applications).

Clearances — On exterior framed walls stone should be kept a minimum 4" clearance above grade or 2" above pavement. On concrete or CMU walls maintain 2" above grade or 1/2" above pavement.

Water Resistive Barrier – For proper moisture protection behind TIER® panels, install a water-resistive barrier (WRB) in two separate layers, shingled to promote drainage. Follow the WRB manufacturer's instructions for fasteners, spacing, and lap dimensions. Local building codes may allow a single 60-minute WRB layer to be used if a drainage cavity is part of the wall system. If the WRB is light in color and may show through joints, overlay with a dark #15 felt meeting ASTM D226 for wall applications.

Approved Building Board — it is recommended that panels be fixed to OSB, plywood or another fastener capacity board with a minimum thickness of 1/2" for plywood and 7/16" for OSB.

2. STARTER RAIL - TYPE 03

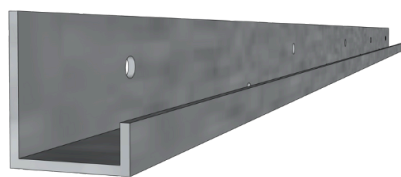
Use a chalk line and/or level to ensure the marks for your starter rail are in the correct place. On exterior applications install 6" flashing at starter rail location. Flashing should extend a minimum of 3-1/2" above the starter rail top edge. Self-Adhered Flashing Tape is suitable for this application.

Install the Starter Rail with stainless steel fasteners at your starting point line.

TYPE-01
Clip



TYPE-03
Starter Rail



INSTALLATION

3. INSTALLING THE TIER® ULTRA PANELS

Where your wall contains corners, begin by placing a corner panel on top of the starter rail fixed to the substrate.

Next, position a TIER® TYPE-01 Clip near the center of the corner panel return and secure it to the substrate using a stainless steel fastener.

Repeat this for the return on the corner panel.



Where your wall does not contain corners, cut the horn (as shown below) of a full panel to begin. Place the cut flat panel on the starter rail and position the flat edge to the end of your wall. Fasten with two TIER® TYPE-01 Clips evenly placed where possible.

Position a starter panel on the starter rail next to the corner or your cut flat panel depending on your wall style. Gently tap it into position with a rubber mallet. Remember not to apply too much force as the panel should fit snugly into place. Repeat this process with a full panel. Each panel requires securing with two TIER® TYPE-01 Clips on top. Each panel sits on either two clips underneath or on a starter rail depending on position in the wall assembly.

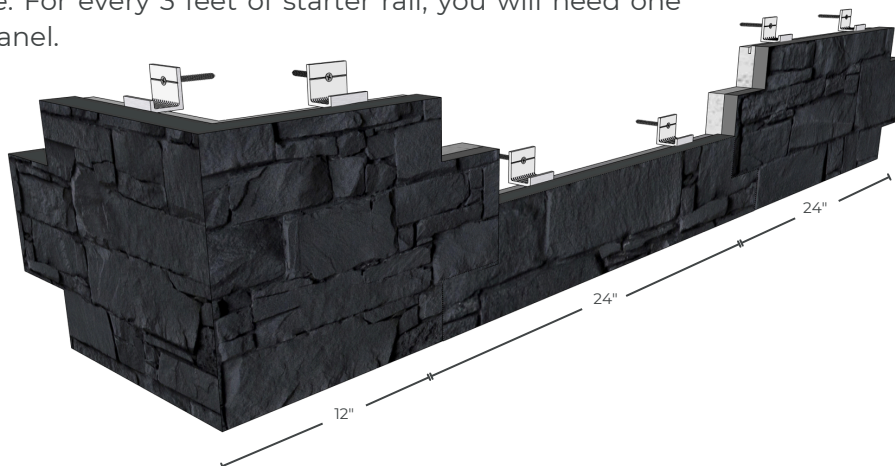


Repeat this process with a full a full panel always making sure you use approved stainless steel screws for each fixing point.

This process is the same for your top row, only the starter panel will be placed upside down so the longest edge runs along the top of your wall.



Your first and last row should have a 1:1 ratio of flats to starter panels, along your starter rail (as shown below) or top edge. For every 3 feet of starter rail, you will need one starter panel.



INSTALLATION

4. INSTALLING THE TIER® NOVA PANELS

Where your wall contains corners, begin by placing a corner panel on top of the starter rail fixed to the substrate.

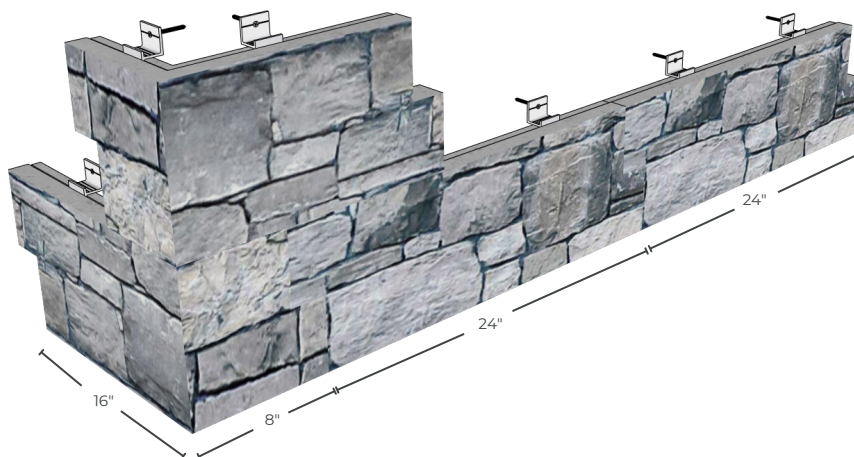
Next, position a TIER® TYPE-01 Clip near the center of the corner panel return and secure it to the substrate using a stainless steel fastener.

Repeat this for the return on the corner panel.

Where your wall does not contain corners, cut the horn (as shown below) of a full panel to begin. Place the cut flat panel on the starter rail and position the flat edge to the end of your wall. Fasten with two TIER® TYPE-01 Clips evenly placed where possible.

Position a flat panel on the starter rail next to the corner unit or your cut flat panel, depending on your wall layout. Gently tap it into place using a rubber mallet—avoid excessive force, as the panel should fit snugly. Repeat this process along the wall until you reach a corner or the end of the installation area. Each panel must be secured with two TIER® TYPE-01 Clips on the top edge. Panels will either rest on two clips below or on the starter rail, depending on their placement in the wall assembly.

Note: TIER® NOVA corner pieces feature one long side and one short side. When stacked, the long and short sides alternate intentionally—this staggered layout is designed to break up joint lines between rows, creating a more natural, masonry-like appearance.



INSTALLATION

5. INSTALLING TIER® WATERTABLE SILLS

When installing sills with TIER® ULTRA or NOVA panels, align the kerf cut on the bottom of the sill to sit securely over the top edge of the last installed panel and its clips. Flashing should extend a minimum of 3-1/2" above the sill top edge. Self-Adhered Flashing Tape is suitable for this application.



Once the sill is placed on the clips and panels below it, it is then fastened to the wall at both ends, using a TIER® TYPE-01 Clip and stainless steel screws.

6. CUTTING

When installing TIER® Natural Stone Panels around returns and wall openings such as windows and doors, we recommend using a diamond blade for clean, precise cuts.

Always use proper PPE, including gloves, eye protection, face shield, dust mask or respirator, hearing protection, and steel-toed shoes.

For cutting, a wet saw or dust mitigation system should be used to control airborne particles. Depending on site conditions, OSHA-compliant dust control measures may also be required.