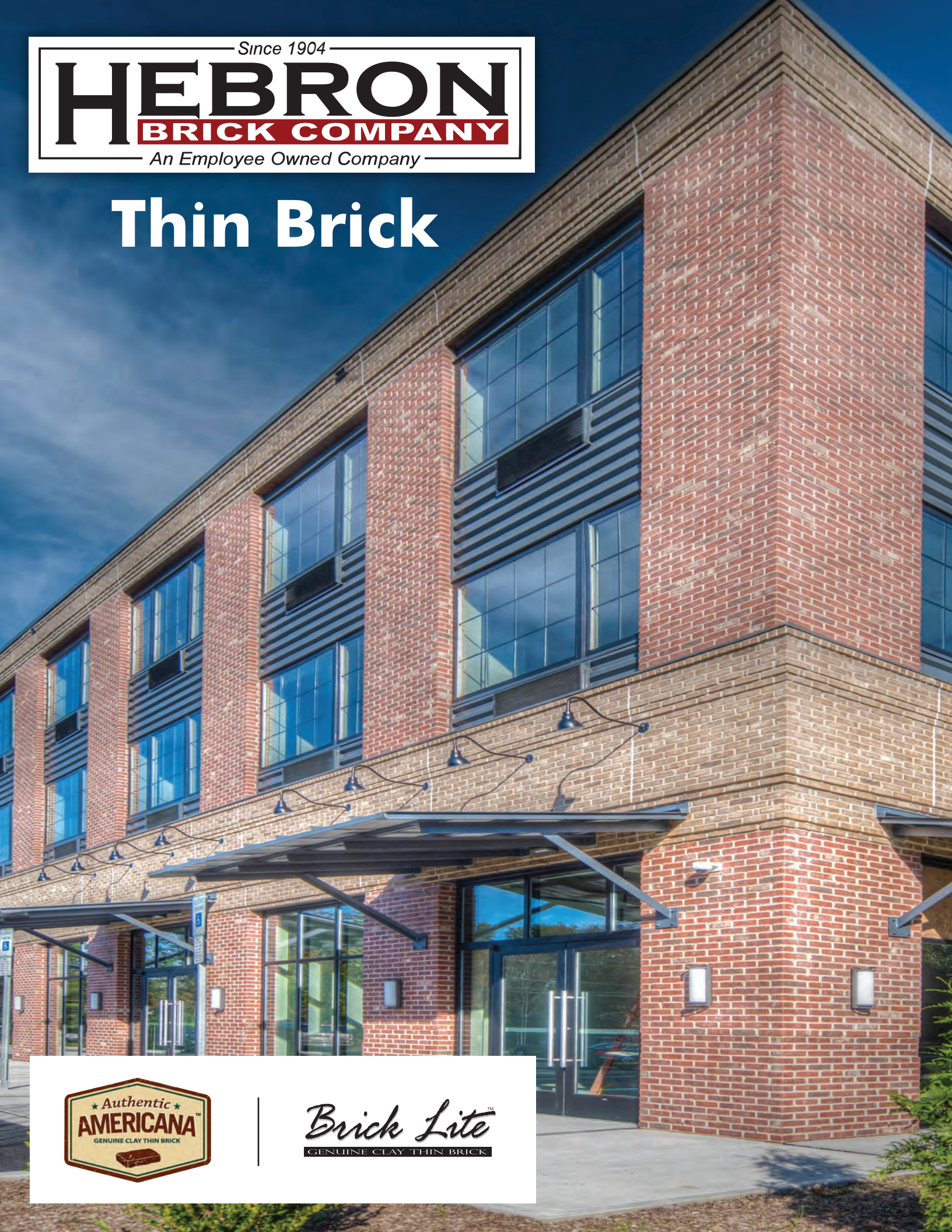


Since 1904

HEBRON BRICK COMPANY

An Employee Owned Company

Thin Brick



Brick Lite

GENUINE CLAY THIN BRICK



Authentic Americana



Old Broadway



Speak Easy



Leo's Pub



Prohibition



Route 66



Rum Runner



Bourbon Street

www.hebronbrick.com



Ale House



Bell Tower



Warehouse District Paint Grade Brick



Barrel Room



Smokehouse



Carriage House



Prohibition



Bootlegger

Brick Lite™

GENUINE CLAY THIN BRICK

Rustic



Dakota Common



Prairie Common



Castlewood



Brandywine



Winston



Madison



Harbourtown



Desert Common

Brick Lite™

GENUINE CLAY THIN BRICK



Onyx Ironspot Smooth



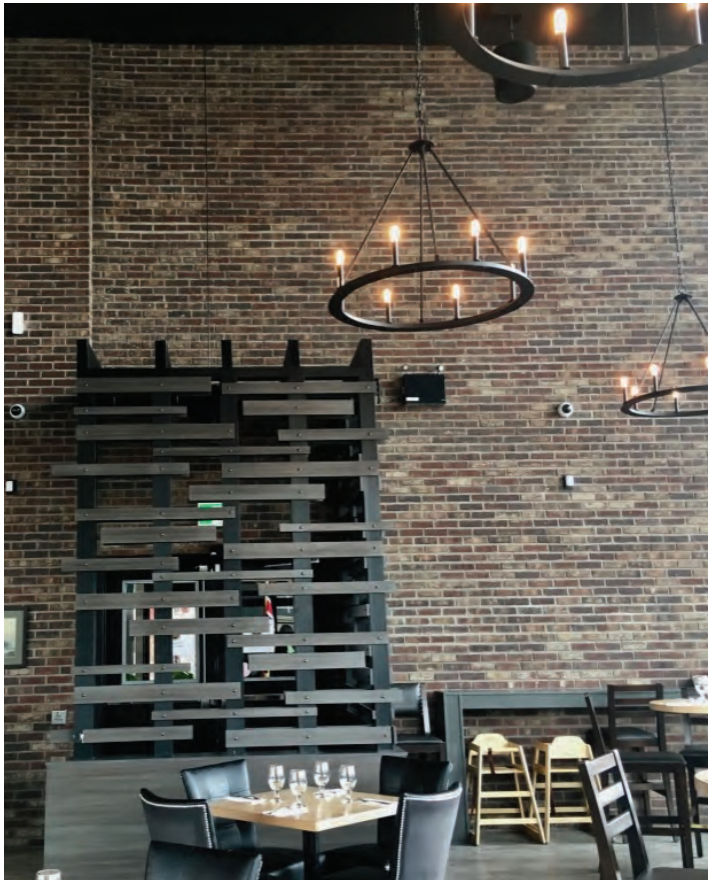
Slate Gray Smooth



Silverado Smooth



Silverado Smooth



Dakota Common



Slate Gray Smooth



Winston



Bourbon Street & Bootlegger



Onyx Ironspot



Ale House



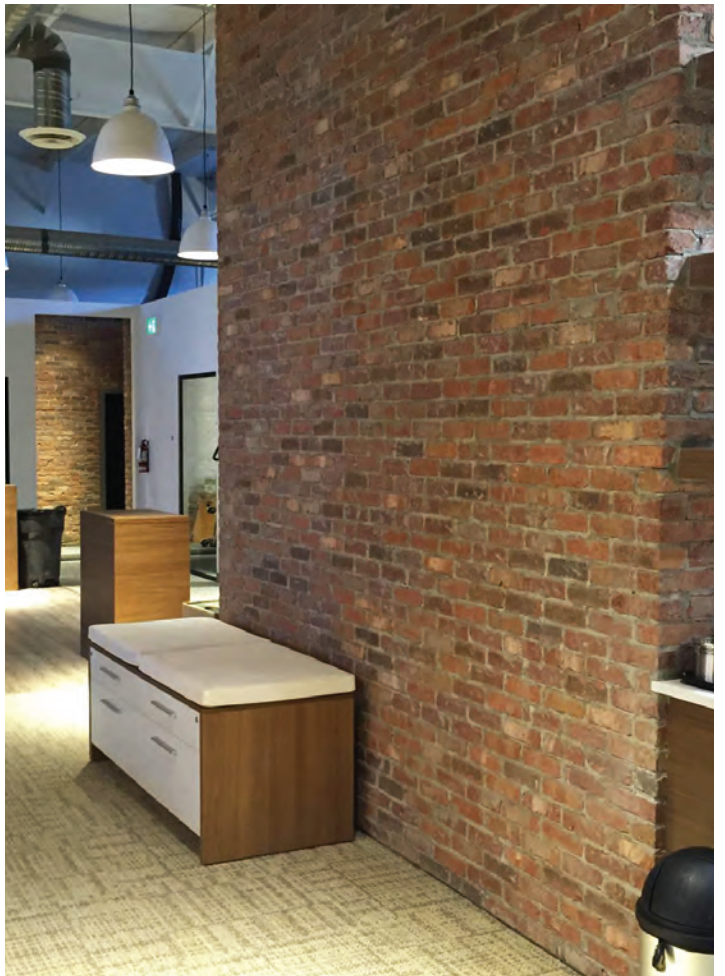
Warehouse District Paint Grade



Bootlegger



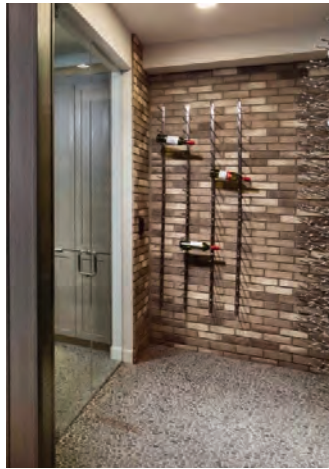
Winston



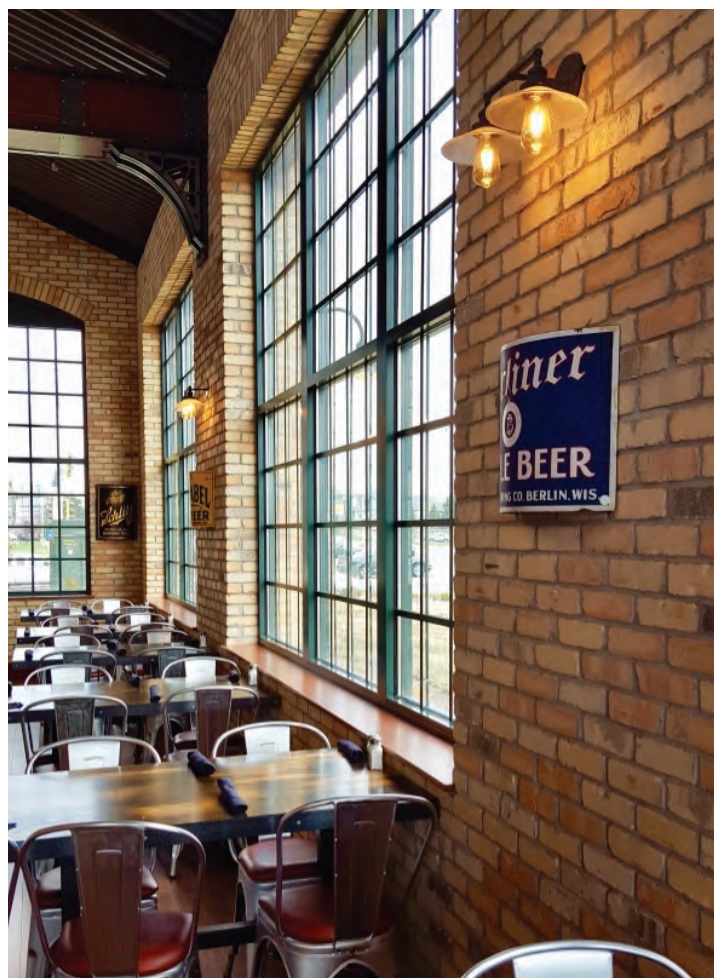
Bell Tower



Bootlegger



Harbourtown



Old Broadway



Route 66



Old Broadway

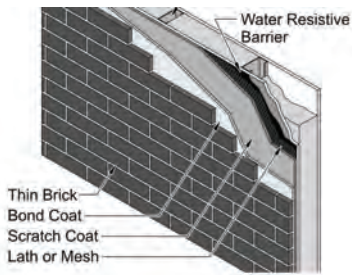


Carriage House

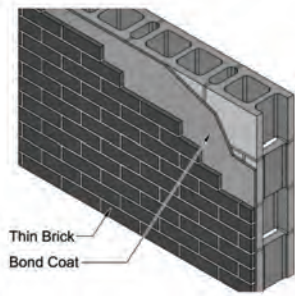


Route 66

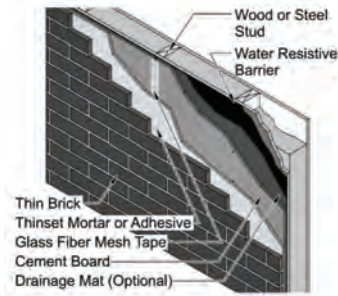
Thick Set Application on Studs:



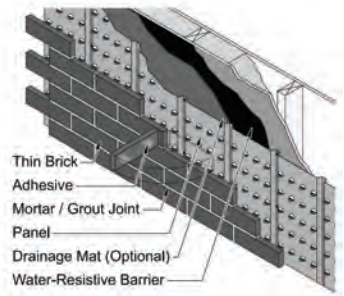
Thin Set Application on CMU:



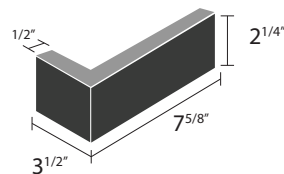
Exterior Thin Set Application on Studs:



Modular Panel on Studs:



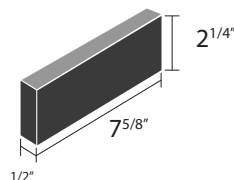
Corner Dimensions:



Corner Packaging:

5 In. ft. per box
24 pieces per box
24 lbs. per box

Stretcher Dimensions:



Stretcher Packaging:

7.3 sq. ft. per box
50 slices per box
37.5 lbs per box



Hebron Brick Company
1000 E Washington Ave
Hebron, ND 58103
www.hebronbrick.com



SAFETY DATA SHEET

1. IDENTIFICATION OF THE SUBSTANCE/MIXTURE AND THE COMPANY/UNDERTAKING

Product Identifier

Material Name: Brick

Trade Name: Clay Brick

Chemical Family: Predominately Aluminum Silicates

Formula: Mixture

Relevant Identified Uses of the Substance or Mixture and Uses Advised Against

Intended Use: Building material used for structural support.

Name, Address, and Telephone of the Responsible Party

Hebron Brick Company

PO Box S

Hebron, ND 58638

Product Support / Technical Services Phone: 701-878-4428

Emergency Telephone Number: 1-800-222-1222

Contact E-Mail: pete@hebronco.com

2. HAZARDS IDENTIFICATION

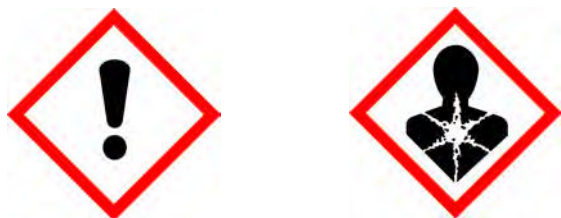
Appearance: Granular brick shaped solid; comes in wide range of colors

Hazard Classification of the Substance or Mixture: Skin irritation 2
Eye irritation 2A
Skin sensitization 1B
Carcinogenicity 1A
Specific target organ toxicity - Single exposure 3
Specific target organ toxicity - Repeated exposure 1

Signal Word: Danger

Hazard Statement: Brick dust may contain crystalline silica, a chemical that has been determined by certain agencies to cause cancer. See Section 11 for more information on health hazards.

Pictograms:



Exclamation Point - irritants to skin, eyes and lung, hazard to ozone

Health Hazard - carcinogen, mutagenicity, respiratory sensitivity, reproductive toxin, target organ toxin, aspiration, toxin

Precautionary Statements:

Limit inhalation of clay dust. Do not eat, drink, or smoke when using this product. Wash hands thoroughly after handling. Contaminated work clothing must not be allowed out of the work place. Obtain special instructions before use. Do not handle until all safety precautions have been read and understood. Wear protective gloves, protective clothing, eye protection, and face protection. Use only outdoors or in a well vented area.

Response:

If exposed or concerned: Get medical advice and attention immediately. If skin rash occurs: Get medical advice/attention. If in eyes: Rinse cautiously with water for several minutes. Remove contact lenses, if present and easy to so. Continue rinsing. If eye irritation persists: Get medical advice/ attention. If brick dust is inhaled: Remove person to fresh air to keep comfortable for breathing. Call a poison control center doctor if you feel sick.

Storage:

Not applicable

Disposal:

Dispose of unused or unwanted brick products in accordance with all local, regional, national and international regulations.

3. COMPOSITION/ INFORMATION ON INGREDIENTS

Ingredient	CAS Number	%Weight
Aluminum Silicates	Various	50-85%
Quartz	14808-60-7	5-25%
Chromium Compounds	Various	0-3
Manganese compounds	Various	0-3
Iron compounds as granular body additives	Various	0-3
Calcium compounds	Various	0-3

Additional Information:

The above chemistries are provided for industrial hygiene and environmental purposes and are not intended to represent product specifications. This

information has been compiled from data believed to be reliable. Elements such as aluminum, arsenic, boron, nickel, tin, titanium, vanadium, and zirconium may be present in trace amounts. Brick products as shipped do not present an exposure hazard.

4. FIRST AID MEASURES

Description of First Aid Measures

Eye Contact: Flush with running water. Obtain medical assistance if irritation continues.

Skin Contact: Wash with soap and water. If an allergic reaction causes a rash that does not heal within a few days consult a physician. Treat abrasions as any other scrap or cut with disinfectants and bandages.

Ingestion: None (no known acute effects)

Inhalation: Remove from exposure to airborne particulates. Consult a physician if breathing does not return to normal.

Most Important Symptoms and Effects, both Acute and Delayed

Symptoms and Effects of Exposure: For information on potential signs and symptoms of exposure, see Section 2 - Hazardous Identification and/or Section II - Toxicology Information.

Medical Conditions Aggravated by Exposure: Excessive dust exposure may aggravate any existing respiratory disorders or diseases. Possible complications or allergies resulting in irritation to skin, eyes, and respiratory tract may occur from excessive exposure to dusts.

Recommendations for Immediate Medical Attention and Special Treatment Needed

Notes to Physician: Symptoms may not appear immediately.

5. FIRE-FIGHTING MEASURES

Extinguishing Media: Not applicable

Special hazards arising from the Substance or Mixture

Hazardous Combustion Products: No data available

Fire/Explosion Hazards: Bricks as shipped do not pose a fire or explosion hazard.

Advice for Fire-Fighter: None

6. ACCIDENTAL RELEASE MEASURES

Personal Precautions and Protective Equipment

Use personal protection equipment recommended in Section 8

Emergency Procedures: Not applicable

Methods and Material for Containment and Cleaning Up: Not applicable

Cleanup Procedures: Not applicable

7. HANDLING AND STORAGE

Precautions for Safe Handling

Minimize dust generation and accumulation. Avoid breathing dust.

Conditions for Safe Storage, Including any Incompatibilities

Storage Conditions: Always stack and store bricks in a stable manor to avoid falling hazards.

8. EXPOSURE CONTROLS/ PERSONAL PROTECTION

Aluminum Silicates

OSHA PEL	15 mg/m ³
ACGIHTLV	10 mg/m ³

Quartz

OSHA PEL	10 / %SiO ₂
ACGIH TLV	0.025 mg/m ³ (respirable)

Chromium Compounds

OSHA PEL	Not available
ACGIH TLV	Not available

Manganese Compounds

OSHA PEL	Not available
ACGIH TLV	Not available

Iron Compounds as granular body activities

OSHA PEL	Not available
ACGIH TLV	Not available

Calcium Compounds

OSHA PEL	Not available
ACGIH TLV	Not available

Exposure Controls

Engineering Controls: Provide adequate ventilation to maintain exposures below the OSHA PEL and ACGIH TLV for quartz and other substances.

Personal Protective Equipment: Refer to applicable national standards and regulations in the selection and use of personal protective equipment (PPE). (Protective goggles, gloves, protective clothing, and dust mask)

Feet: Use of steel toe shoes is recommended when handling brick.

Eyes and Face: Face shield should be used when sawing brick.

Skin:	Use gloves and or protective clothing if abrasions or allergic reactions are experienced.
Respiratory Protection:	For airborne concentration exceeding the OSHA PEL or ACGIH TLV use a NIOSH and /or MSHA approved respirator.
Other:	Use of wet sanding method is recommended anytime the bricks must be cut.

9. PHYSICAL AND CHEMICAL PROPERTIES

Physical State:	Granular solid	Color:	Brick come in a wide range of color
Odor:	Essentially odorless	Odor threshold:	No data available
Molecular Formula:	Mixture	Molecular Weight:	Mixture

Solvent Solubility:	No data available
pH:	No data available
Melting/ Freezing Point (°C):	No data available
Boiling Point (°C):	No data available
Partition Coefficient (Method, pH, Endpoint, Value):	No data available
Decomposition Temperature (°C):	No data available
Evaporation Rate:	No data available
Vapor Pressure (kPa):	No data available
Vapor Density:	No data available
Relative Density:	No data available
Viscosity:	No data available

Flammability

Auto ignition Temperature (Solid) (°C):	No data available
Flammability (Solids):	No data available
Flash Point (liquid) (°C):	No data available
Upper Explosives Limits (Liquid) (% by Vol.):	No data available
Lower Explosive Limits (Liquid)(% by Vol.):	No data available

10. STABILITY AND REACTIVITY

Reactivity:	Brick as shipped are not reactive
Chemical Stability:	Stable under normal conditions of use
Possibility of Hazardous Reactions:	
Oxidizing Properties:	No data available
Incompatible Materials:	No data available
Hazardous Decomposition Products:	No data available

11. TOXICOLOGICAL INFORMATION

Effects of Short Term and Long Term Exposure:

Short Term

Bricks do not present an inhalation, ingestion or contact hazard. However, operations such as sawing and grinding may result in the following effects.

Eye: May cause irritation by abrasion with dust or chips.
Skin: Brick dust or chips may cause allergic reaction in hypersensitive individuals. May cause cuts and skin abrasions.
Inhalation: Brick dust or chips may cause congestion and irritation in nasal and respiratory passages.
Ingestion: No known acute effects.

Long Term:

Excessive exposures to respirable particles (dust) over an extended period of time may result in the development of pulmonary diseases such as silicosis.

Information on Toxicological Effects

General information: Toxicological properties of the formulation have not been investigated. Brick dust may contain crystalline silica, a chemical that has been determined by certain agencies to cause cancer and other chemicals known to cause cancer, birth defects and other reproductive harm. Inhalation of brick dust above established or recommended exposure levels should be avoided by use of wet sawing or shaping and/or use of a NIOSH and/or MSHA approved respirator.

Carcinogen Status: The following carcinogenicity classifications for crystalline have been established by the following agencies:

OSHA:	Not regulated as a carcinogen
IARC:	Group 1 carcinogen in humans
NIOSH:	Carcinogen, with no further categorization
NTP:	Known carcinogen

12. ECOLOGICAL INFORMATION

There are no known environmental impacts.

13. DISPOSAL CONSIDERATIONS

Waste Treatment Methods: Dispose of waste in accordance with all applicable laws and regulations. State specific and community specific provisions must be considered. It is recommended that the waste minimization be practiced.

14. TRANSPORT INFORMATION

This material is not regulated for transportation as a hazardous material/dangerous good.

DOT: Bricks as shipped are not hazardous materials per DOT regulations.

15. REGULATORY INFORMATION

Safety, Health and Environmental Regulations/Legislation Specific for the Substance or Mixture

RCRA	Brick in its solid form is typically considered a non-hazardous waste for disposal, but local regulation may vary, therefore all waste must be disposed/recycled/reclaimed in accordance with federal, state, and local environmental control regulations. Water containing brick solids, such as from wet sawing operations, should also be disposed of in accordance with federal, state, and local environmental regulations. Brick waste should not be used as a blasting agent.
EPCRA Section 311/312:	Bricks as shipped are not a section 311/312 reportable product.
EPCRA Section 313:	Bricks as shipped are not subject to the section 313, Toxic chemical release inventory reporting requirements.
DOT:	Bricks as shipped are not hazardous materials per DOT regulations.

16. OTHER INFORMATION, INCLUDING DATE OF PREPARATION OR LAST REVISION

Hebron Brick Company considers our product an "article" as defined in 30 CFR 1200 (b) (g) (iv) and 40 CFR 372.38. As an article, an SDS is not required and the product is exempt from all other requirements of the hazard communication standard. OSHA requires an SDS for brick because it is occasionally dry sawed. We recommend only wet sawing of brick.

Revision Date: September 23, 2016

Reason: Converted MSDS to SDS

This document has been prepared in accordance with the SDS requirements of the OSHA Hazard Communication Standard 29 CFR 1910.1200. This SDS was prepared with information believed accurate at the time of preparation and was prepared and provided in good faith. However, Hebron Brick Company assumes no responsibility as to the accuracy or suitability of such information and no warranty expressed or implied is made.

Thin Brick Veneer

Abstract: This *Technical Note* presents design and construction information on the use of thin brick in adhered veneer systems. Methods of thin brick construction discussed include thick set, thin set, modular panels and prefabricated panels consisting of architectural precast concrete, tilt-up concrete and wood or steel stud frame panels. Properties of the finished construction and comparisons to other systems are presented.

Key Words: adhered veneer, precast concrete, modular, panel, prefabricated, steel stud, thick set, thin brick, thin set, tilt-up, wood stud.

SUMMARY OF RECOMMENDATIONS:

Substrate

- Surfaces should be structurally sound and free of coatings, loose debris and other bond-impeding substances
- Max. variation from plane, ¼ in. in 10 ft (6 mm in 3.05 m)
- Max. deflection of L/360 for wall stud framing

Water-Resistive Barrier

- For exterior applications over stud-framed assemblies, install two layers or one layer with a drainage mat

Flashing and Weeps

- For exterior applications, install corrosion-resistant flashing, integrated with the water-resistive barrier at through-wall penetrations, substrate transitions and terminations of adhered veneer
- Install weep screed or flashing of corrosion-resistant material at base of adhered veneer, with vertical leg or attachment flange extending at least 3½ in. (89 mm) vertically

Thin Brick

- Use brick complying with ASTM C1088, with Type and Grade as appropriate for project requirements

Mortar and Adhesive

- Use ASTM C270, Type S, mortar applied to a thickness of ¾ to 1¼ in. (10 to 32 mm) or one of the following with a minimum shear strength between the thin brick and substrate of 50 psi (345 kPa):
 - ASTM C270, Type S, mortar modified with latex or other suitable polymers
 - Modified mortar complying with ANSI A118.4, Latex-Portland Cement Mortar
 - Non-sagging adhesive compatible with masonry and substrate surfaces

Movement Joints

- Extend movement joints through thickness of entire veneer assembly, for full length or height of veneer, including parapets
- Space no more than 18 ft (5.5 m) o.c. in either direction
- Max. area between movement joints should not exceed 144 sq ft (13.4 m²) or length-to-height or height-to-length ratio of 2½ to 1
- Align veneer movement joints directly over substrate movement joints
- For proprietary modular and prefabricated panels, follow manufacturer's instructions
- See *Technical Note* 18A for recommended placement of additional movement joints

Installation Methods

- Use **Table 1** to determine an appropriate thin brick installation method for substrate wall and application. Use one of the following installation methods:

- Thick Set:

- Attach reinforcing lath or mesh to substrate and apply scratch coat of mortar or modified mortar in one or two layers to a nominal thickness of ½ to ¾ in. (12 to 19 mm)
- To scratch coat, apply bond coat of mortar or modified mortar to nominal thickness of ⅛ in. (3.2 mm), and groove with notched trowel

- Thin Set:

- Use cement backer board with treated joints as substrate for exterior applications over wood or steel studs
- Apply bond coat of modified mortar to a nominal thickness of ⅛ in. (3.2 mm) or non-sagging adhesive in accordance with adhesive manufacturer's instructions

- Modular Panel Systems:

- Install thin brick on panel and attach panel to substrate in accordance with panel manufacturer's instructions

- Prefabricated Panels:

- For architectural precast and tilt-up concrete panels, install in accordance with panel manufacturer's instructions
- For wood or steel stud framing panels, install using panel manufacturer's instructions, or one of the installation methods above

Thin Brick Placement

- Use either of the following:
 - Completely cover back of thin brick when using mortar or modified mortar or, when using adhesive, follow manufacturer's instructions or apply 1 in. diameter (quarter-sized) dabs at each end
 - Firmly press or tap thin brick into mortar or adhesive while maintaining joint width and coursing

Mortar/Grout Joints

- Force mortar to fill joints as thin brick are placed or fill joints using a grout bag, mortar gun or other mortar delivery device
- When thumbprint hard, tool with concave, vee or grapevine profile jointer

INTRODUCTION

Thin fired clay units, commonly known as thin brick, have gained increasing popularity by combining the aesthetic of traditional brick masonry with the economic benefits that may be realized in thinner wall sections. Though thin brick were first developed in the 1950s as a way to reface existing construction, current applications include both new and existing structures in residential and commercial construction.

Thin brick veneer, also referred to as adhered veneer, is available in many varieties but can be classified by four basic installation methods: thick set, thin set, modular panel systems and prefabricated panels. The first two involve field installation of each brick unit on a substrate with either a thick mortar bed for thick set or a thin layer of modified mortar or adhesive for thin set. Modular panel systems use an intermediary panel with a typical area of 4 to 6 sq ft (0.33 to 0.5 m²) made of polystyrene, metal or other materials to assist in supporting the thin brick. The modular panels are either fastened to the substrate wall with thin brick already adhered to them or the thin brick are adhered to the panels in the field. Prefabricated panels involve creating larger, structurally independent panels (typically) larger than 10 sq ft (1 m²) that are lifted into place on the building. Panels consisting of architectural precast concrete or steel or wood stud framing are usually constructed off-site, while concrete for tilt-up panels is usually poured in the field.

This *Technical Note* describes thin brick and its use in various interior and exterior adhered veneer applications. Typical installation methods, material requirements and applicable code requirements are also presented. For information on anchored brick veneer, refer to other *Technical Notes* in this series.

PROPERTIES OF THIN BRICK VENEER

Thin brick are made from the same materials and similar processes as other brick but are thinner and weigh less. Thin brick are a single element among many within an adhered veneer system that influence its characteristics. System performance can be accurately determined only when an assembly is evaluated as a whole. When compared with common light-weight cladding systems, thin brick veneer generally provides superior resistance to noise, minor impacts, abuse, heat and vandalism. The durability, fire resistance, security and acoustic comfort provided by thin brick systems are primarily due to their mass.

Adhered brick veneer can be installed where providing support for heavier, anchored brick veneer may be difficult. Thin brick systems also impart less load to buildings. Adhered thin brick veneer may be installed by masons, tilesetters or other workers. Some manufacturers can “match” thin brick with brick used in anchored veneer applications found elsewhere on the building.

SYSTEM DESCRIPTIONS

Adhered veneer is bonded to and dependent upon its backing for stability and strength. This bond is achieved by embedding the thin brick in a mortar or modified mortar setting bed, applying an adhesive or modified mortar and pressing the thin brick onto a panel substrate material, or by casting concrete onto the backs of thin brick. Thin brick can be applied either on-site or off-site. There are four primary methods for the installation of adhered thin brick veneer: thick set, thin set, modular panels and prefabricated panels.

Thick Set

The thick set method consists of applying thin brick with a bond coat of mortar onto a mortar scratch coat, as shown in [Figure 1](#). The thick set method requires a reinforcement layer of either lath or mesh within the scratch coat to assist in controlling cracking due to shrinkage of the mortar behind the thin brick.

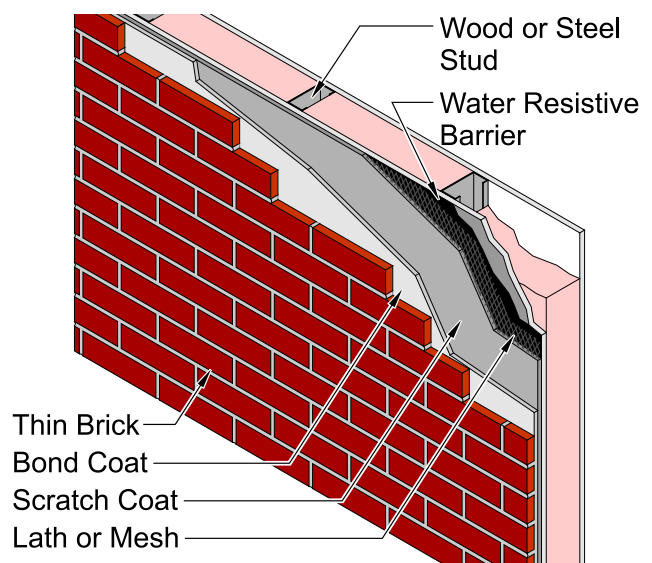


Figure 1
Thick Set Application on Studs

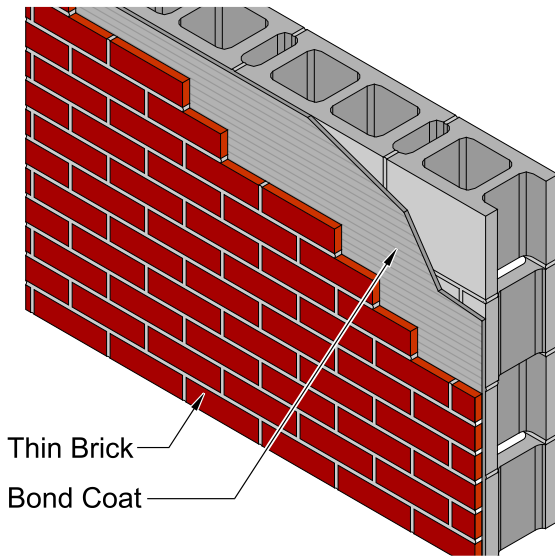


Figure 2
Thin Set Application on CMU

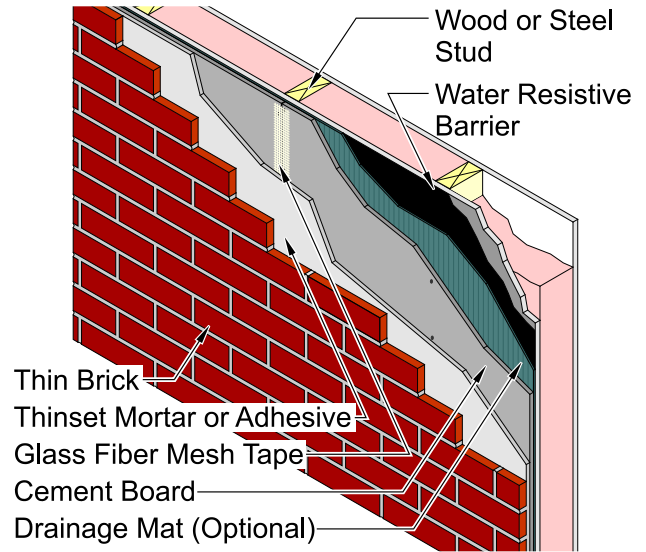


Figure 3
Exterior Thin Set Application on Stud
with Drainage Mat

Thin Set

Thin brick installed using the thin set method is adhered directly to the substrate by a thin (typically around $\frac{1}{8}$ in. [3.2 mm]) layer of adhesive or modified mortar, as shown in [Figure 2](#). The surface of the veneer closely mimics the surface condition of the substrate. Due to its reduced thickness, the thin set method does not include a reinforcement layer of lath or mesh. Cement backer board is the recommended substrate for exterior adhered veneer installed over stud walls using the thin set method, as shown in [Figure 3](#).

Modular Panel Systems

In these applications, thin brick are adhered or mechanically secured to a modular panel, usually made of metal, rigid foam insulation, wood or other materials, that is fastened to the substrate wall, as shown in [Figure 4](#). Modular panel systems often have integral water resisting elements such as drainage mats or drainage spaces. Thin brick are adhered to some modular panels prior to installation, while other panels are attached to the substrate before thin brick are adhered. Unlike thick set or thin set, panels usually have grooves, tabs or rails to align the thin brick courses and to provide support while the mortar or adhesive cures. Some proprietary modular panel manufacturers provide all the components needed for installation and warranty the panel and components as complete systems.

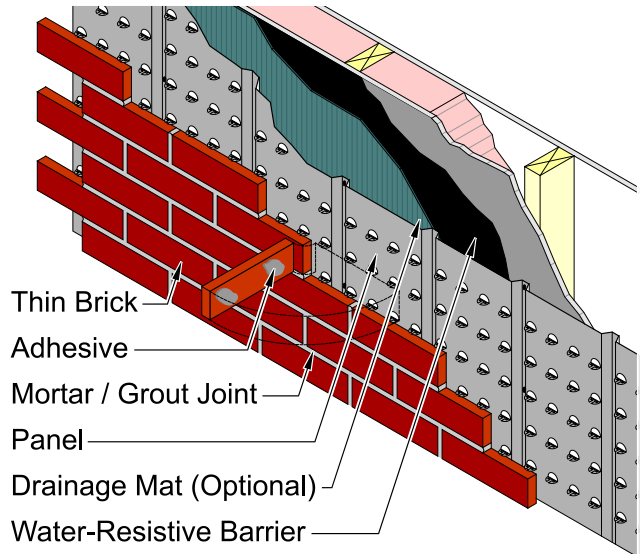


Figure 4
Modular Panel on Stud

Prefabricated Panels

Thin brick can be integrated into tilt-up and architectural precast concrete panels. To create prefabricated panels, thin brick are typically placed facedown into a form liner made of rubber or plastic (used to hold the thin bricks in place), and concrete or a fluid grout is poured directly over the backs of the thin brick (as shown in [Photo 1](#)). In some cases, a retarder or wax is applied to the thin brick's exposed face (finished face) to prevent staining. The concrete that flows into the space between the thin brick forms the appearance of mortar joints. Reinforcement is included in the concrete as necessary to meet project requirements.

Once cured, the panel is stripped from the form to reveal the thin brick surface. The thin brick are bonded to the concrete on the back and all four sides of the brick. Once the panel has cured, the exposed concrete between the brick typically serves as the mortar joint. Alternatively, joints between the brick may be finished by filling with mortar or modified mortar and tooling to the desired profile.

Prefabrication using thin brick can also be accomplished by building panels on sections of wood or steel stud framing and applying thin brick to the panel. In addition to straight walls, this system is well suited to soffits and other locations where lighter-weight prefabricated components are needed. The thin brick are typically attached to the panels using the thick set method.



Photo 1

Fabrication of Precast Panel with Thin Brick

SYSTEM SELECTION

Table 1 lists acceptable installation methods for different substrates and applications. Where indicated, the substrate or installation method must comply with the notes below the table to be considered acceptable.

TABLE 1
Acceptable Installation Methods for Thin Brick

Substrate Wall	Application	Thin Brick Installation Method			
		Thick Set	Thin Set	Modular Panels	Prefabricated Panels
Wood or Steel Stud Framing	Exterior	Notes 1, 2, 4 and 5	Notes 1, 3, 6 and 7	Notes 1, 2, 5 and 7	Notes 1, 2, 5 and 7
	Interior	Notes 1, 2 and 4	Notes 1, 3 and 7	Notes 1, 2 and 7	Notes 1, 2 and 7
Masonry or Concrete	Exterior	Notes 2 and 4	Note 3	Note 2	Note 2
	Interior	Notes 2 and 4	Note 3	Note 2	Note 2

See below for notes referenced in table.

1. Maximum deflection of L/360 is recommended for wall stud framing. Maximum deflection of L/240 is permitted for walls by the *International Building Code (IBC)* when rigid finishes like thin brick are applied. For interior adhered veneer applications supported by wood floors, the IBC limits the vertical deflection of the flooring system to L/600.
2. Maximum allowable variation of ¼ in. in 10 ft (6 mm in 3.05 m) from plane.
3. Acceptable only when surface is bondable and variation from plane is no more than ¼ in. in 10 ft (6 mm in 3.05 m).
4. Use only with reinforcing lath or mesh in scratch coat.
5. Use exterior-grade sheathing. Wood stud framing is required by the *IBC* and the *International Residential Code (IRC)* to have water-resistant barrier with the equivalent performance of two layers of Grade D paper.
6. Acceptable only when cement backer board is used as substrate.
7. For *IBC*, the system must comply with the alternative design requirements of the *Building Code Requirements for Masonry Structures (TMS 402)* since the installation method does not include metal lath.

Factors that influence the selection of a particular system or installation method may include the substrate, weather conditions, cost, and experience and skill level of the installer. Performance characteristics of each system should also be considered in the selection process.

Thick set installation provides a greater thickness to absorb some of the irregularity in substrates that are uneven. It also incorporates lath or mesh reinforcement that is fastened to the substrate to provide a mechanical connection to the veneer and to accommodate some differential movement between the veneer and the substrate.

Thin set installations require a more plumb and level substrate surface than thick set installations because the veneer is adhered directly to the substrate. Unevenness in substrate surfaces will also be evident in the thin brick wall surface. Further, the location of movement joints in thin set installations requires more careful attention than in thick set installations, as movement between the substrate and the veneer is accommodated only where movement joints are placed.

Modular panel systems, like thick set installations, accommodate substrates that are uneven or have questionable bonding surfaces relatively easily. Because modular panels systems are designed to align brick units properly, to securely attach thin brick units and to promote drainage of penetrant water, their installation typically requires less skill than other methods.

Wood and steel stud frames and architectural precast panels are fabricated in a manufacturing facility, which permits them to be assembled without interruption from weather. The size of panels can be limited by the maximum size allowed on the roads to the project site. Large variations in the building's frame may make it difficult for panels to be installed to typical masonry tolerances. Since tilt-up panels are assembled and poured directly at the job site, the panel size is not limited by transportation issues but may be limited by job site restrictions.

SYSTEM DESIGN

For residential applications, the *IRC* [Ref. 2] requires thin brick adhered veneer to be installed over a water-resistive barrier and to comply with the adhered veneer provisions of the *Building Code Requirements for Masonry Structures* (TMS 402/ACI 530/ASCE 5) [Ref. 5]. For commercial construction, the *IBC* [Ref. 1] also requires thin brick adhered veneer to meet the requirements of TMS 402.

TMS 402 allows both prescriptive and alternate methods of design. Prescriptive design requirements limit the specified thickness of the brick to a maximum of 2 in. (67 mm) and require the substrate to be masonry, concrete or metal lath and portland cement plaster applied to masonry, concrete, steel framing or wood framing. If other than $\frac{3}{8}$ in. to $1\frac{1}{4}$ in. (10 to 32 mm) of Type S mortar is used to adhere the thin brick, then the shear strength between the veneer units and backing should be tested in accordance with ASTM C482 for the gross unit surface area and have a shear strength of 50 psi (345 kPa) minimum.

Water-Resistive Barrier and Means of Drainage

The *IRC* and *IBC* require exterior walls to include a water-resistive barrier and a means of draining exterior water that enters the assembly, with a few exceptions. The water-resistive barrier must be installed over the sheathing or studs of frame wall assemblies but may be omitted over concrete or masonry walls designed and flashed in accordance with applicable code requirements. Exterior wall assemblies that demonstrate resistance to wind-driven rain through testing in accordance with ASTM E331 under code-prescribed conditions are also exempt from water-resistive barrier and means-of-drainage requirements.

The code indicates that a water-resistive barrier can be either one layer of No. 15 asphalt felt complying with ASTM D226, Type 1, or other approved material. As noted in the *2009 IRC Commentary* [Ref. 2], field experience and testing [Ref. 7] have shown that using two layers of building paper in exterior applications of stucco considerably decreases the penetration of moisture. Where installed over wood-based sheathing, the *IRC* and *IBC* require two layers of vapor-permeable water-resistive barrier with a performance equivalent to two layers of Grade D building paper, or a single layer of water-resistive barrier with a water resistance equal to or greater than 60-minute Grade D paper that is separated from the veneer by a designed drainage space or a layer of material that does not absorb water. These codes do not indicate specific materials or methods that qualify as providing a means of drainage; however, products such as drainage mats are often used to meet means-of-drainage requirements. Because they are specifically designed to provide the separation and means of drainage required by code, inclusion of designed drainage spaces or drainage mats as shown in [Figure 3](#) is preferred.

A water-resistive barrier is not required for interior applications but may be beneficial in protecting building materials from moisture during installation. For further information, refer to the *IBC* [Ref. 1] and *IRC* [Ref. 2].

Flashing/Weep Scream

Flashing is a material that collects water drained from the veneer assembly and directs it out of the wall through weeps. Building codes require flashing and weeps at the following locations:

- Beneath the first course of veneer above final grade. The *IRC* requires the flashing (or weep screed) to extend a minimum of 1 in. (25 mm) below the foundation plate line for exterior applications over stud walls. To promote drainage, install the first course of veneer directly above the flashing or screed, without a mortar/grout joint.
- At points of support, such as shelf angles, lintels and structural floors.
- At wall and roof intersections.

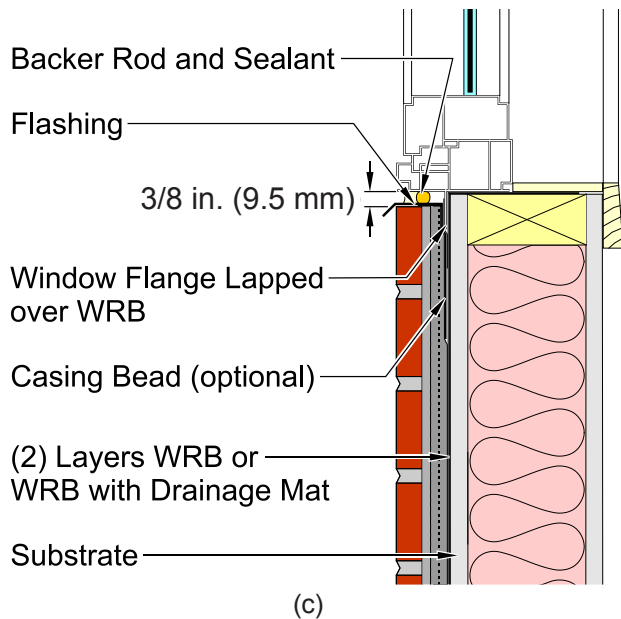
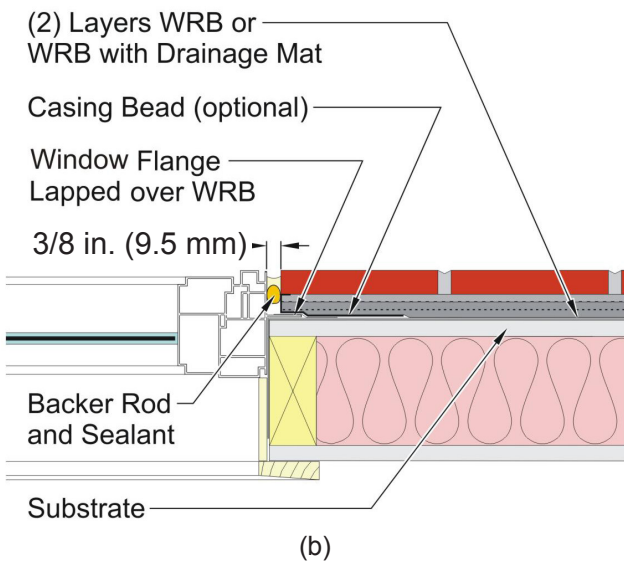
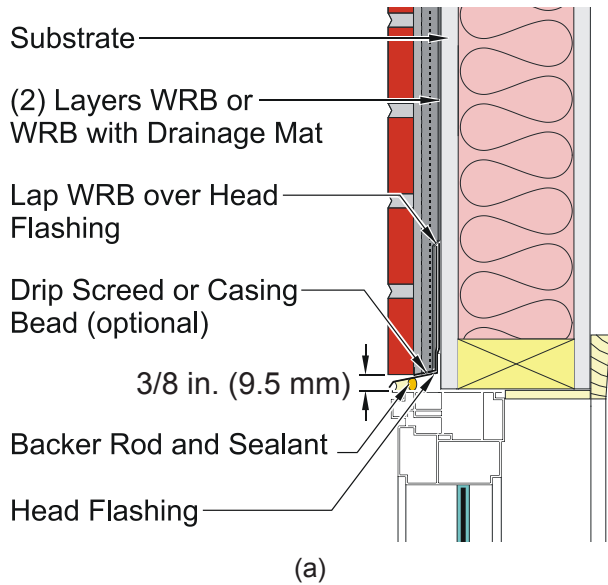


Figure 5

Flashing Details at (a) Window Head, (b) Window Jamb and (c) Window Sill

- At the heads, jambs and sills of exterior window and door openings.
- At the intersection of chimneys or other masonry construction with frame or stucco walls.
- Under and at the ends of copings and sills.
- Where exterior porches, decks or stairs attach to a wall or floor assembly of wood or steel stud construction.

The flashing or weep screed should extend to the exterior wall surface or beyond, with the back edge (attachment flange) turned up at least 3½ in. (89 mm) vertically. The water-resistive barrier should lap over the flashing or weep screed. In assemblies with two layers of water-resistive barrier installed over a wood-based sheathing, direct the flashing between the layers. Extending flashing beyond the wall surface to form a drip is recommended. When using a flashing that deteriorates with UV exposure, a separate drip edge or weep screed can accomplish this. When a drip edge/weep screed is not used, such flashings should stop, or be cut, flush with the face of the wall. Typical head, jamb and sill flashing details are shown in Figure 5.

Foundations

Figure 6 shows a typical foundation detail for thin brick veneer. The IRC and IBC require exterior applications of thin brick veneer over stud walls to be installed a minimum of 4 in. (102 mm) above grade, a minimum of 2 in. (51 mm) above paving, and a minimum of ½ in. (12 mm) above exterior walking surfaces supported by the same foundation. The thin brick are required to extend a minimum of 1 in. (25 mm) below the top of a concrete or masonry foundation wall.

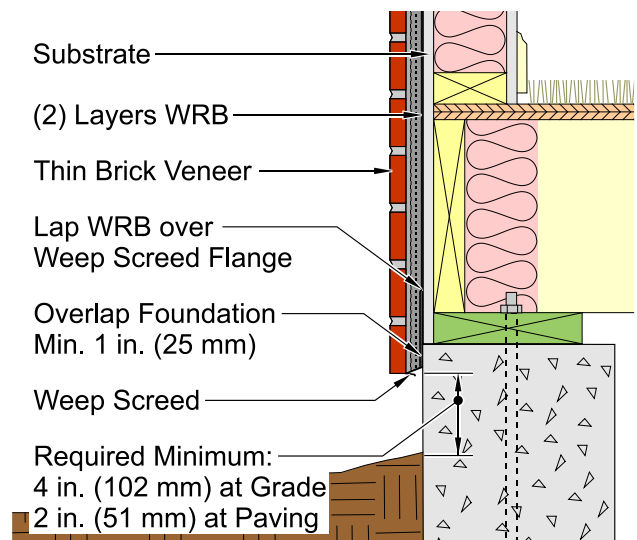


Figure 6

Foundation Detail and Required Clearances

Deflection

For thin brick veneer with a substrate of masonry or concrete, deflection is not a concern, because the flexural stiffness of the veneer is similar to that of masonry and concrete. When the substrate wall is wood or steel stud framing, out-of-plane deflection of the framing must be considered, because the stiffness of the veneer can be substantially greater than the stud framing. The *IBC* limits the deflection of stud framing to a maximum of $L/240$ when rigid finishes like thin brick are applied. For interior adhered veneer applications supported by wood floors, the *IBC* limits the vertical deflection of the floor system to $L/600$. To decrease potential cracking and the potential for the veneer to separate from the stud framing, a wall deflection limit of $L/360$ is recommended when a wood or steel stud framing substrate is used.

Movement Joints

Thin brick veneers may experience differential movement as the brick expand and the substrate or mortar bed shrinks. To accommodate this movement, a system of movement joints should be installed through the entire layer of adhered thin brick veneer. If movement joints are not placed properly or are not used at all, cracking may occur. It is important to note that architectural precast and tilt-up concrete panels that incorporate movement joints where they are joined together usually do not require additional movement joints within the face of the panel. For movement joints of proprietary modular panel systems, follow manufacturer's instructions. For other thin brick installation methods, incorporate movement joints at regular spacings.

Spacing. The distance between movement joints should not be more than 18 ft (5.5 m) either vertically or horizontally. Areas between movement joints should not exceed 144 sq ft (13.4 m²). Veneer areas between movement joints should preferably be square in shape but may have a maximum length-to-height or height-to-length ratio of 2½ to 1. Where thin brick veneer is adhered to a masonry or concrete substrate, the movement joints through the veneer should be installed directly over and aligned with movement joints in the substrate. Where thin brick veneer is installed on studs, the movement joints through the veneer are not necessarily required to be aligned with movement joints through the sheathing on the studs. Where lath or mesh are used, attachment should allow free movement of the veneer between movement joints.

Construction. Movement joints should extend from the exterior surface of the adhered veneer to the substrate beneath the thin brick. Where modular panels are used, construct movement joints in accordance with manufacturer's instructions. Alignment of movement joints with those in the substrate is more easily achieved when they are formed during installation of mortar beds. A compressible filler strip set during mortar placement can provide the space needed for the joint as well as aid in keeping the joint free of mortar or other obstructions. At the exterior surface, a backer rod and sealant prevent water penetration, as shown in [Figure 7](#). Movement joints must be at least as wide as joints in the substrate that they are placed directly over. The minimum recommended width of movement joints through adhered veneer is ⅜ in. (10 mm). In thick set applications, lath or mesh reinforcement should stop on each side and not continue through the movement joint, as shown in [Figure 8](#).

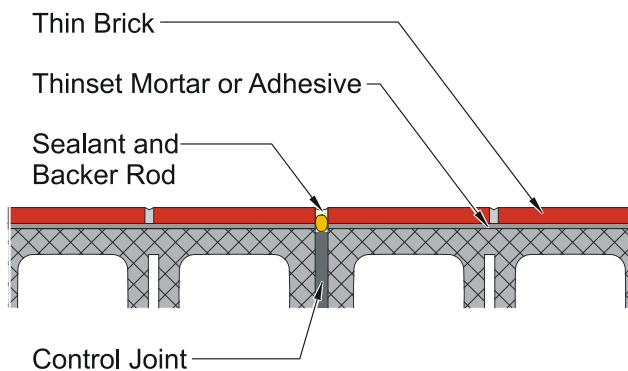


Figure 7

Thin Brick Movement Joints on CMU Backing

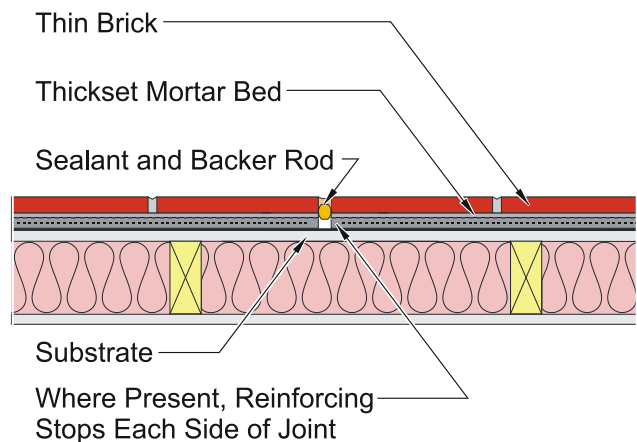


Figure 8

Thin Brick Movement Joints on Stud Backing

Continuous Insulation

In order to meet prescriptive thermal performance requirements found within various energy codes, continuous insulation is increasingly incorporated into adhered veneer systems. Adhered veneer may be installed over continuous insulation; however, longer, more robust fasteners capable of carrying the weight of the veneer unsupported through the thickness of the insulation will typically require design by an engineer. “Guide to Attaching Exterior Wall Coverings through Foam Sheathing to Wood or Steel Wall Framing” [Ref. 6], published by the Foam Sheathing Committee of The American Chemistry Council, provides a directed approach that may assist engineers in designing adequate connections through continuous insulation.

MATERIALS

Thin Brick Units

Thin brick are available in a wide variety of colors, textures and face dimensions. Most thin brick units are ½ to 1 in. (13 to 25 mm) thick but can be as thick as 1¼ in. (45 mm). Thin brick shapes such as those depicted in Figure 9 allow the adhered veneer to be applied around corners, giving the appearance of traditional face brick facades. Manufacturers should be contacted to determine available shape options.

Manufacturing Methods. Two methods are used to manufacture thin brick. The first is to extrude or mold the clay at the desired thickness with any surface modifications (coatings, impressions, etc.) made to the exposed face during forming. The second approach involves forming and firing a thicker brick and either splitting it lengthwise or cutting the brick to the desired thickness. In some cases, this process can produce multiple thin brick from each fired unit. Corner units may be formed in their final shape, cut to their final shape from a single unit or assembled (often mitered) by adhering multiple units. Some thin brick are manufactured with textured, keyed or dovetailed backs.

Due to the asymmetrical configuration of corner and edge units, thin brick are typically stacked in boxes or strapped in smaller packages rather than stacked in cubes like most brick.

Thin Brick Specifications. Thin brick should comply with ASTM C1088, *Standard Specification for Thin Veneer Brick Units Made from Clay or Shale* [Ref. 4]. As with other clay brick standards, C1088 includes requirements for durability, physical appearance and tolerances for dimensions. For exterior applications, Grade Exterior should be used. For interior applications, Grade Interior brick are generally used, but Grade Exterior may be used if desired.

The standard has varying appearance requirements for the brick based on Type. By default, the requirements for Type TBS apply. For some applications, the higher precision of Type TBX may be required. Type TBX may be necessary when using some form liners to position thin brick for use in prefabricated concrete panels. For thin brick with non-uniform features, such as tumbled, distressed or other non-uniform effects, the requirements of Type TBA apply. For further information regarding ASTM C1088, refer to *Technical Note 9A*.

Although thin brick are typically specified according to ASTM C1088, some architectural precast concrete and tilt-up concrete panel manufacturers require thin brick incorporated into their panels to meet the “PCI Standard for Embedded Clay Thin Brick” as published by the Precast/Prestressed Concrete Institute [Ref. 8]. The PCI criteria for thin brick are more stringent than those in ASTM C1088, Type TBX; however, BIA is not aware of research and testing that has demonstrated that these criteria are required for the successful use of thin brick in concrete panels. Some PCI criteria may not be attainable within the normal manufacturing processes used for thin brick.

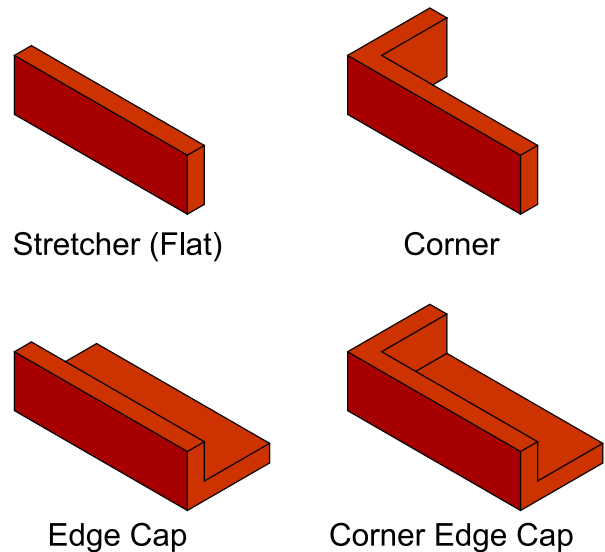


Figure 9
Thin Brick for Adhered Applications

Reinforcing Lath and Mesh

Reinforcing lath and mesh should be made of corrosion-resistant materials. Galvanized or stainless steel are most common; however other materials such as glass fiber lath may be acceptable with a product evaluation approval. Metal lath should be either 2.5 lb/sq yd (1.4 kg/m²) or $\frac{3}{8}$ in. (10 mm) rib, 3.4 lb/sq yd (1.8 kg/m²) metal lath complying with ASTM C847. Self-furred lath or lath attached with self-furring fasteners is recommended. Woven wire mesh should be minimum 18 gauge complying with ASTM C1032. Glass fiber lath should comply with applicable building code requirements. Glass fiber lath is not recommended for applications over open stud framing.

Mortar

Mortar and modified mortar used for scratch and bond coats should comply with ASTM C270, Specification for Mortar for Unit Masonry, Type S, with or without a latex or polymer modifier specifically designed for use with thin veneer; or with ANSI 118.4. Mortar used to fill joints may have a higher water content as required by installation method. For more information on mortar, refer to *Technical Note 8*.

Modified mortar. Typically a modified mortar is a portland cement mortar modified by adding a polymer/latex additive or a bond enhancer. Latex additives may improve adhesion, reduce water absorption and provide greater bond strength and resistance to shock and impact. When using the liquid form of latex, it is added as a replacement for part or all of the water used when mixing the mortar.

Flashing

Many materials are suitable for use as flashing in adhered veneer walls. Flashing materials should be corrosion-resistant, waterproof, durable and sufficiently tough and flexible so as to resist puncture and cracking. Flashing should also be compatible with other materials in the veneer assembly, such as adhesives and sealants. *Technical Note 7A* discusses characteristics of some common flashing materials. The use of superior materials reduces the potential for system failure and exceedingly expensive costs associated with replacement.

Weep screeds or flashing used at the base of the wall must be a minimum 0.019 in. (0.48 mm) or 26-gage galvanized or plastic with a minimum vertical attachment flange of $3\frac{1}{2}$ in. (89 mm). Asphalt-impregnated felt, building paper and house/building wraps are not acceptable for use as flashing.

Cement (Backer) Board

Cement (backer) board, which consists of a cementitious binder reinforced by fiber mats, is a dimensionally stable substrate for decorative finishes in wet or dry areas. Cement board used as a substrate for exterior wall applications of thin brick should be at least $\frac{1}{2}$ in. (13 mm) thick and conform to ASTM C1325, Type A, or ANSI 118.9.

INSTALLATION

The following sections provide recommended procedures for installing thin brick via the thick set and thin set methods and describe the installation of modular and prefabricated panels. Installation of mortar in thin brick veneer applications should be scheduled when temperatures will be between 40 °F (4 °C) and 90 °F (32 °C). Otherwise, cold or hot weather construction measures, as described in *Technical Note 1*, should be employed.

Installation methods for ceramic tile, as published by the Tile Council of North America in the *TCNA Handbook for Ceramic, Glass, and Stone Tile Installation* [Ref. 3], may also be used to install thin brick in thick set and thin set applications. For thick set with a masonry or concrete substrate, use Method W201. For thin set with a masonry or concrete substrate, apply according to Method W202. For thick set with stud framing, use Method W222. For interior applications of thin set on stud framing, use Method W243.

Substrate and Surface Preparation

Where thin brick units are installed on site, proper construction and preparation of the substrate to receive them is critical. Surfaces receiving thin brick should be structurally sound and free of loose or deleterious debris or residue, including algae, mold, dust, laitance, paste, wallpaper or laminate. Remove all substances that could potentially impede the bonding of the veneer. Such substances include oils, greases, waxes, bond-release agents, sealers, solvents, paints or other coatings or surface preparations. If a substrate surface is wet, then the water source must be identified and eliminated. Surfaces on which thin brick are placed must not vary from plane by more than $\frac{1}{4}$ in. in 10 ft (6 mm in 3.05 m). Taping sheathing joints or fastening sheathing edges with plywood clips can sometimes

reduce unevenness. If a surface does not comply with surface tolerances, then a leveling coat must be applied before proceeding.

Walls of wood and steel stud framing should be designed to meet lateral deflection requirements. Exterior walls of wood or steel stud framing require a water-resistive barrier on sheathing. Fasten cement board through sheathing and water-resistive barrier into studs. Joints of cement board should be staggered and offset from sheathing joints. Treat cement board joints with alkali-resistant glass fiber mesh tape embedded in mortar or modified mortar in accordance with cement board manufacturer recommendations. Allow masonry and concrete substrates to cure for 28 days prior to installation of thin brick veneer.

Thick Set Method

Metal lath or wire mesh should be applied over the water-resistive barrier and attached with 11 gauge nails 1½ in. (38 mm) in length with a ⅞ in. (11 mm) head or 16 gauge staples ⅞ in. (22 mm) in length, spaced at a minimum of 6 in. (152 mm) o.c. Lap the lath or mesh a minimum of 2 in. (51 mm) at sides and ends where sheets are joined. Lap mesh one full mesh, wire to wire, where joined.

Attach lath or mesh to wood stud framing with corrosion-resistant fasteners that penetrate a minimum of 1 in. (25 mm) into the stud. For steel stud framing, use corrosion-resistant screws that extend through the steel stud connection a minimum of three exposed threads. For masonry or concrete, use hardened concrete nails or powder-actuated fasteners that penetrate a minimum of 1 in. (25 mm).

Scratch Coat. For thick set systems, a scratch coat of mortar with a nominal thickness of ½ to ¾ in. (12 to 19 mm) is applied to the lath or mesh until it is fully embedded in the mortar. The scratch coat can be applied in one layer or as two nominal ¼ to ⅜ in. (6 to 10 mm) layers, where the first layer fully embeds the lath or mesh. The surface of each layer should be scratched (scored) horizontally when thumbprint hard and allowed to cure before applying the next layer or coat. Installation in a single layer may be preferable during periods of hot or cold weather to avoid potential delamination between layers.

Bond Coat. Apply a bond coat of mortar or modified mortar over a damp scratch coat to a nominal thickness of ⅞ in. (3.2 mm) and groove with a square-notched trowel. For maximum adhesion, covering the entire back of the thin brick with bond coat mortar is recommended. While the coat remains wet and workable, embed the thin brick into the bond coat and fill mortar joints as described in the “Setting Thin Brick” and “Mortar Joints” sections below.

Thin Set Method

An adhesive or modified mortar may be used to bond thin brick to the substrate in thin set applications.

Adhesive. Thin brick may be adhered with a non-sagging adhesive compatible with the thin brick and substrate. These are typically available in tubes and are applied using a pressure gun. Apply the adhesive according to manufacturer’s instructions. The adhesive is usually applied in 1 in. diameter (quarter-sized) dabs on the back of the brick at each end. Adhesives should not be applied in a manner that will trap water, resulting in subsequent freezing and thawing. **Figure 10** shows an interior application of thin brick on wood stud framing using the thin set method.

Modified Mortar. Dry components of modified mortar should be pre-blended prior to adding the latex additive. Apply according to manufacturer’s instructions. Most manufacturers recommend a nominal ⅞ in. (3.2 mm) thickness. For maximum adhesion, complete coverage of the back of thin brick with bond coat mortar is advised. Apply modified mortar over an area no greater than can be covered by thin brick while the mortar remains workable. Use a notched trowel as recommended by the mortar manufacturer to evenly spread the modified mortar to a nominal ⅞ in. (3.2 mm) thickness. Within 10 minutes of applying the latex-modified mortar on the substrate, completely cover the back of thin brick with modified mortar and embed in substrate mortar coat as indicated in the “Setting Thin Brick” section below.

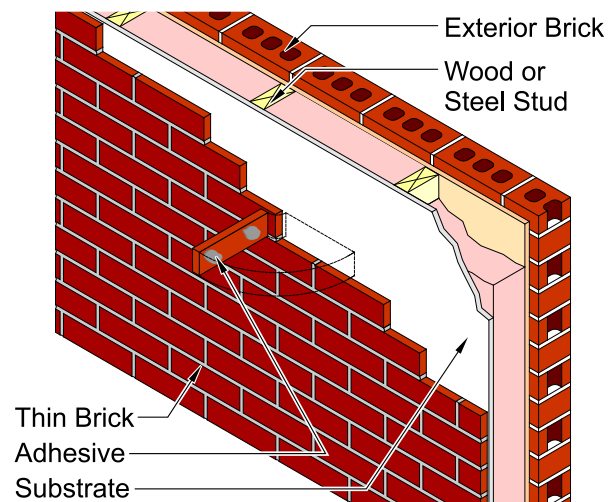


Figure 10
Interior Thin Set Application on Studs

Setting Thin Brick

Each thin brick should be firmly pressed or tapped into place, taking care to maintain proper spacing and alignment of the joints and bond pattern. Setting each brick with a rubber mallet or a beating block can help to ensure flatness and secure bedding. If mortar or modified mortar is used, a slight excess should squeeze out of the joints between brick during the setting process. Once the thin brick is set, it should not be moved or the bond may be compromised. If a thin brick is inadvertently moved after initial set has begun, it should be removed, along with any bond coat behind it, and a new thin brick unit installed with fresh mortar, modified mortar or adhesive. Proper setting of each thin brick is critical to ensuring a durable thin brick system. Improper setting of the thin brick is the most frequent cause of poor performance.

Mortar Joints

The mortar joints between thin brick must be filled. One method involves filling the joints as the brick are placed, using a striking tool or a trowel to remove the excess. Placing the brick under firm pressure, while sliding them slightly away from and back into desired position, squeezes excess mortar into the joint between units. A second and more common method is to keep the head and bed joint essentially free of mortar during thin brick placement and to fill the joints separately using a mortar gun, grout bag or other mortar delivery device. Allow the bond coat to cure 24 hours or until joints can be filled without displacement of the brick. Tool joints to a concave, vee or grapevine profile once they have achieved sufficient stiffness (thumbprint hard). [Photo 2](#) shows mortar installation with a grout bag after the brick have been placed.

Modular Panels

Modular panels should be installed according to the instructions provided by the modular panel manufacturer or the manufacturer of the proprietary modular panel system. Installing thin brick on most modular panel systems is similar to the thin set method.

Proprietary modular panel systems may provide all the materials needed to assemble the system, including the modular panel, thin brick, adhesive and mortar. Panels should be fastened in accordance with manufacturer's instructions. The components of such a proprietary system are designed to perform together as a whole; therefore, only the materials and instructions provided by the manufacturer should be used with a proprietary modular panel system.

Most modular panel systems require fastening the panel to the wall before thin brick are installed individually, as shown in [Photo 3](#). Some modular panel systems are designed to be transported to the construction site with the thin brick already installed on most of the panel.



Photo 2
Mortar Placement Using a Grout Bag



Photo 3
Installation of Modular Panel

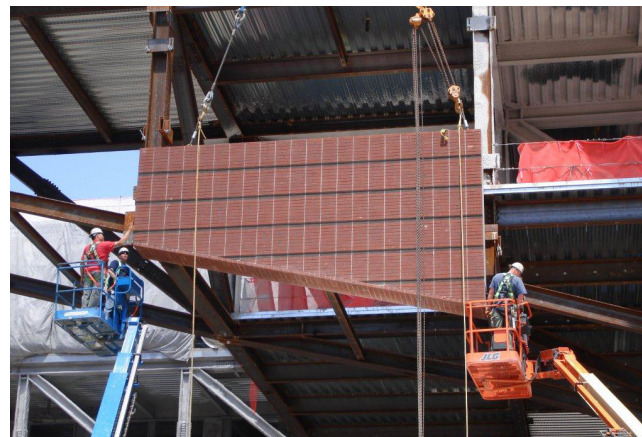


Photo 4
Installation of Prefabricated Panel

Prefabricated Panels

Brick-faced precast concrete panels and prefabricated wood and steel wall panels are typically attached using anchorage devices embedded in the concrete to the building structural frame or foundation. The panels are typically delivered to the job site by truck and lifted into place using a crane or a hoist, as shown in [Photo 4](#). Panels are adjusted to be level, plumb and in alignment with adjacent façade elements before they are bolted or welded in place.

MAINTENANCE

If properly designed, detailed and constructed, minimal maintenance is required for thin brick applications. Brick veneer should be inspected periodically to ascertain performance and to identify any potential problems. Inspections are recommended on an annual basis at a minimum. Such inspections should address sealant joints, any loose units, plumbness of the wall, cracking, etc., to identify repairs and corrections before severe issues develop. For additional information regarding maintenance, refer to *Technical Note 46*.

SUMMARY

Thin brick can be installed over a variety of substrates in both exterior and interior applications using thick set, thin set, modular panels or prefabricated panels. This *Technical Note* describes thin brick systems currently in use and includes recommendations on the selection, design, materials and installation of each system.

The information and suggestions contained in this Technical Note are based on the available data and the experience of the engineering staff and members of the Brick Industry Association. The information contained herein must be used in conjunction with good technical judgment and a basic understanding of the properties of brick masonry. Final decisions on the use of the information discussed in this Technical Note are not within the purview of the Brick Industry Association and must rest with the project architect, engineer and owner.

REFERENCES

1. *2012 International Building Code*, International Code Council, Inc., Country Club Hills, IL, 2012.
2. *2012 International Residential Code and Commentary*, International Code Council, Inc., Country Club Hills, IL, 2012.
3. *2013 TCNA Handbook for Ceramic Tile Installation, 50th Anniversary Edition*, Tile Council of North America, Inc., Anderson, SC, 2013.
4. ASTM International, *Annual Book of ASTM Standards*, West Conshohocken, PA, 2013.
Vol 4.01
ASTM C847, Standard Specification for Metal Lath
ASTM C1032, Standard Specification for Woven Wire Plaster Base
Vol. 4.05
ASTM C270, Standard Specification for Mortar for Unit Masonry
ASTM C1088, Standard Specification for Thin Veneer Brick Units Made From Clay or Shale
ASTM C1325, Standard Specification for Non-Asbestos Fiber-Mat Reinforced Cementitious Backer Units
5. *Building Code Requirements for Masonry Structures* (TMS 402-13/ACI 530-13/ASCE 5-13), The Masonry Society, Boulder, CO, 2013.
6. FSC Tech Matters, "Guide to Attaching Exterior Wall Coverings through Foam Sheathing to Wood or Steel Wall Framing," Foam Sheathing Coalition (of the American Chemistry Council), Washington, DC, December 4, 2012, <http://fsc.americanchemistry.com/Building-Code/Installation-of-Cladding/Guide-to-Attaching-Exterior-Wall-Coverings.pdf>
7. Leslie, Neil P., "Residential Stucco Wall Assembly Moisture Performance Evaluation," *ASHRAE Transactions*, Vol. 114, Part 1, New York, NY 2008.
8. PCI Standard for Embedded Clay Thin Brick, Precast/Prestressed Concrete Institute, Chicago, IL, 2013.